

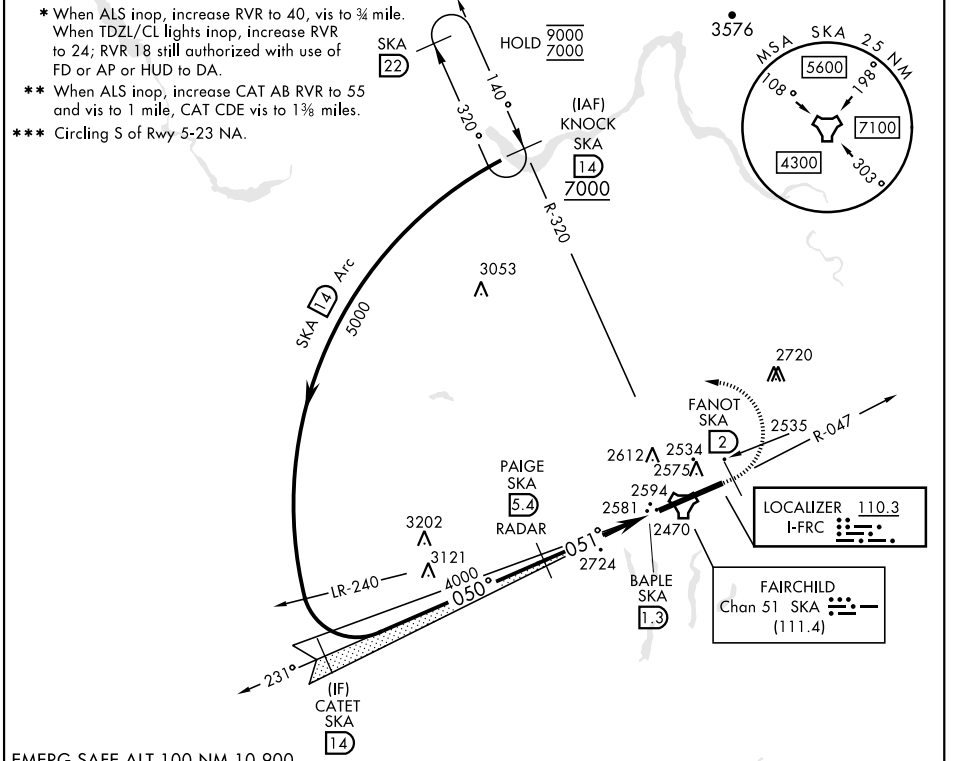
SPOKANE, WASHINGTON

ILS or LOC RWY 5

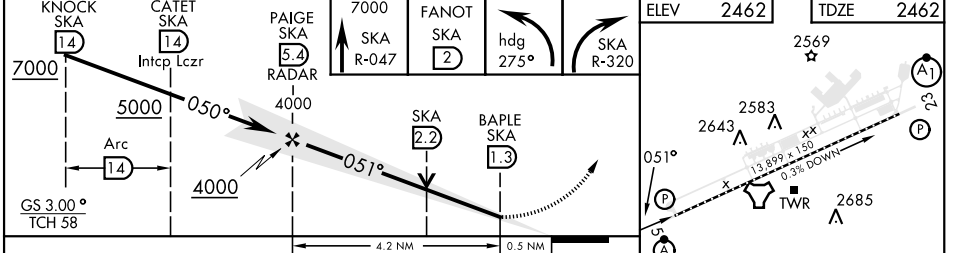
LOC I-FRC 110.3	APCH CRS 051°	Rwy ldg 13,899 TDZE 2462 Arpt Elev 2462	[USAF]	FAIRCHILD AFB (KSKA)
---------------------------	-------------------------	--	--------	----------------------

DME or RADAR reqrd for LOC. RADAR reqrd for KNOCK holding. ALSF-2 MISSED APPROACH: Climb to 7000 via SKA TACAN R-047. At FANOT turn left hdg 275° to intcp SKA R-320 to KNOCK and hold, cont climb in hold to 7000.

ATIS 257.625	SPOKANE APP CON 123.75 282.25 <small>(208° - 028°)</small> 133.35 263.0 <small>(029° - 207°)</small>	TOWER 120.35 233.7	GND CON 123.6 275.8
------------------------	--	------------------------------	-------------------------------



EMERG SAFE ALT 100 NM 10,900



ELEV	2462	TDZE	2462		
CATEGORY	A	B	C	D	E
S-ILS 5 *	2662/18		200	(200-½)	
S-LOC 5 **	2960/24 498 (500-½)		2960/50 498 (500-1)		
*** CIRCLING	2960-1 498 (500-1)		3040-1½ 578 (600-1½)	3040-2 578 (600-2)	3600-3 1138 (1200-3)
HIRL Rwy 5-23 TDZL/CL Rwy 5					
FAF to MAP 4.2 NM					
Knots	60	90	120	150	180
Min:Sec	4:12	2:48	2:06	1:41	1:24

SPOKANE, WASHINGTON 47°37'N-117°39'W FAIRCHILD AFB (KSKA)

Amtd 6 03NOV22

ILS or LOC RWY 5

NW-1, 17 APR 2025 to 15 MAY 2025

NW-1, 17 APR 2025 to 15 MAY 2025