

SPOKANE, WASHINGTON

RNAV (GPS) RWY 23

APCH CRS	Rwy Idg	13,899
231°	TDZE	2423
	Arprt Elev	2462

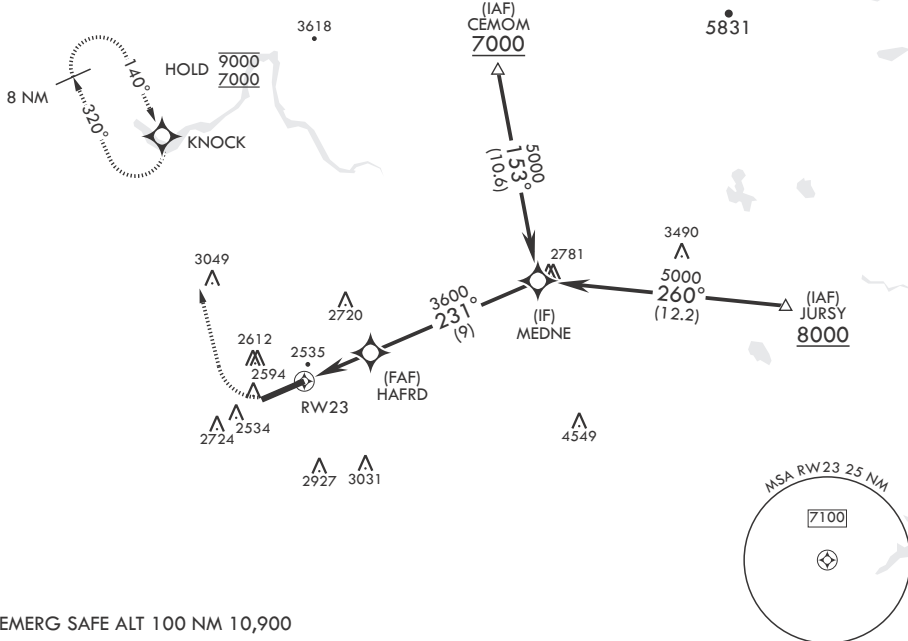
- (USAF)

FAIRCHILD AFB (KSKA)

RNP APCH	ALSF-1	MISSED APPROACH: Climb to 3000, then climbing right turn to 7000 direct to KNOCK and hold, continue climb in hold to 7000.
RADAR required for KNOCK holding.		
<p>⚠ * When ALS inop, increase CAT AB RVR to 55 and vis to 1 mile, CAT CDE vis to 1 1/4 miles.</p>		

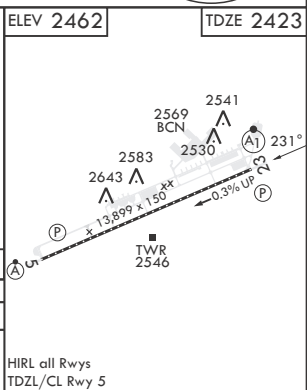
ATIS 257.625	SPOKANE APP CON 123.75 282.25 (208°-028°) 133.35 263.0 (029°-207°)	TOWER 120.35 233.7	GND CON 123.6 275.8
------------------------	--	------------------------------	-------------------------------

** Circling S of Rwy 5-23 NA.



EMERG SAFE ALT 100 NM 10,900

<p>3000</p> <p>7000</p> <p>crs 231°</p> <p>KNOCK</p>	<p>MEDNE</p> <p>5000</p>					ELEV 2462	TDZE 2423
<p>RW23</p> <p>1.1 NM to RW23</p> <p>3600</p> <p>≤ 3.00°</p> <p>TCH 56</p> <p>3.5 NM</p>		<p>HAFRD</p> <p>2535</p>			<p>MEDNE</p> <p>2781</p>		
CATEGORY	A	B	C	D	E		
LNAV MDA*	2820/24	397 (400-½)	2820/35	397	(400-%)		
CIRCLING**	2900-1 438 (500-1)	2920-1 458 (500-1)	3040-1½ 578 (600-1½)	3040-2 578 (600-2)	3600-3 1138 (1200-3)		
SPOKANE, WASHINGTON						FAIRCHILD AFB (KSKA)	
Amdt 2 03NOV22						47°37'N - 117°39'W	



SPOKANE, WASHINGTON

47°37'N - 117°39'W

FAIRCHILD AFB (KSKA)

Amdt 2 03NOV22

RNAV (GPS) RWY 23

NW-1, 17 APR 2025 to 15 MAY 2025

NW-1, 17 APR 2025 to 15 MAY 2025