

SPOKANE, WASHINGTON

TACAN RWY 5

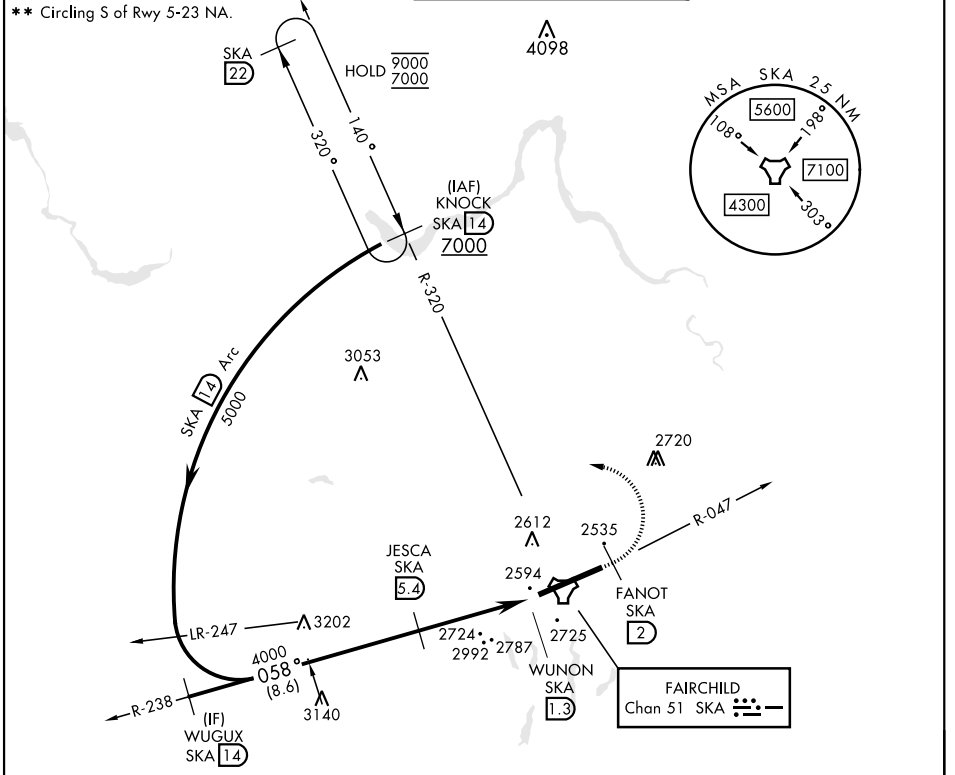
TACAN SKA Chan 51	APCH CRS 058°	Rwy Idg 13,899 TDZE 2462 Arprt Elev 2462
-----------------------------	-------------------------	---

[USAF]

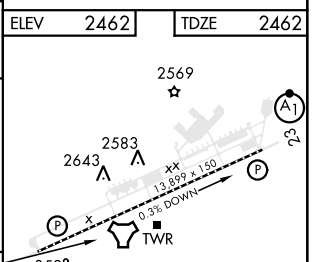
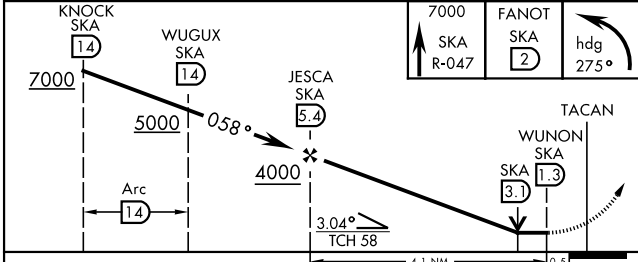
FAIRCHILD AFB (KSKA)

RADAR required for KNOCK holding.		ALSF-2	MISSED APPROACH: Climb to 7000 via SKA TACAN R-047. At FANOT turn left hdg 275° to intcp SKA R-320 to KNOCK and hold, cont climb in hold to 7000.
-----------------------------------	--	--------	---

ATIS 257.625	SPOKANE APP CON 123.75 282.25 <small>(208° - 028°)</small>	TOWER 120.35 233.7	GND CON 123.6 275.8
------------------------	---	------------------------------	-------------------------------



EMERG SAFE ALT 100 NM 10,900



CATEGORY	A	B	C	D	E
S-5 *	3260/24 798 (800-½)	3260/40 798 (800-¾)	3260-1¼	798	(800-1¼)
CIRCLING **	3260-1 798 (800-1)	3260-1¼ 798 (800-1¼)	3260-2½ 798 (800-2½)		3600-3 1138(1200-3)

SPOKANE, WASHINGTON 47°37'N-117°39'W FAIRCHILD AFB (KSKA)

Amtd 5 03NOV22

TACAN RWY 5

NW-1, 17 APR 2025 to 15 MAY 2025

NW-1, 17 APR 2025 to 15 MAY 2025