

# VOR RWY 24

CAIRNS AAF (KOZR)

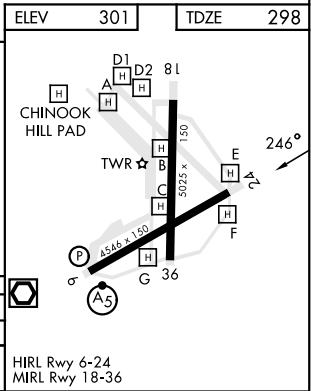
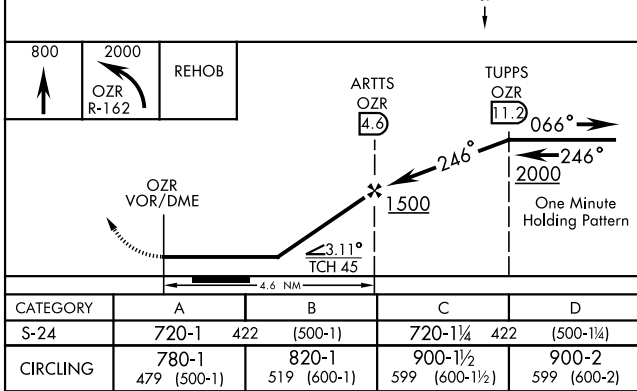
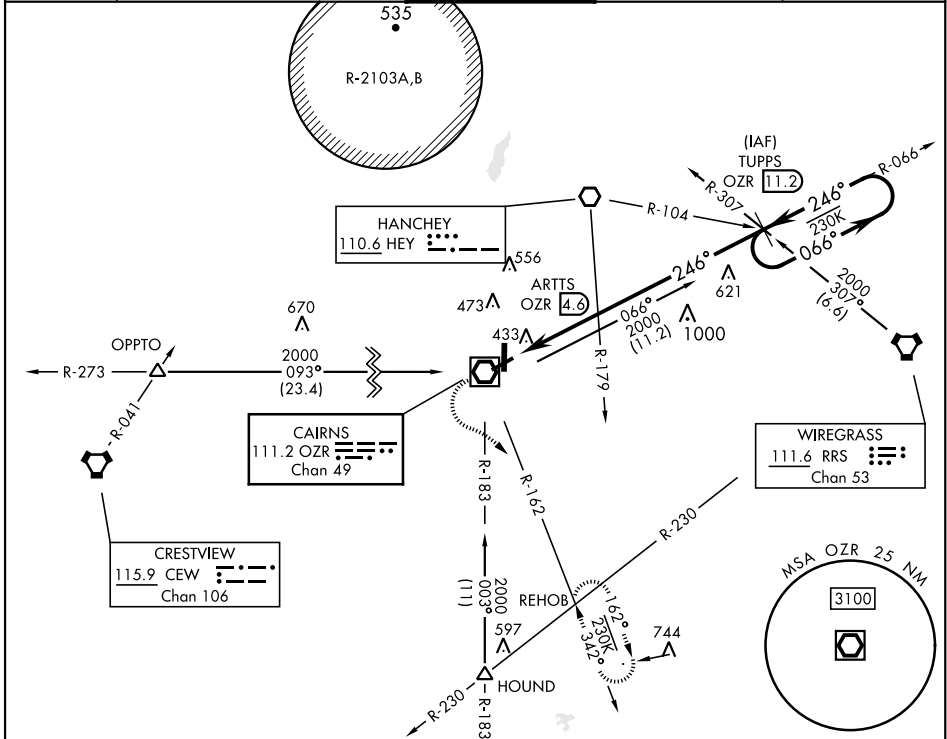
VOR/DME OZR <b>111.2</b> Chan <b>49</b>	APCH CRS <b>246°</b>	Rwy Idg TDZE <b>298</b> Arprt Elev <b>301</b>
---	-------------------------	--

[USA]

**Procedure NA at night.**  
Visibility reduction by helicopters NA.

**MISSED APPROACH:** Climb to 800 then climbing left turn to 2000 via OZR  
VOR/DME R-162 to REHOB INT and hold; or when directed by ATC, climb to  
800 then climbing right turn heading 290° to 2000 within 10 NM (RADAR required).

ATIS <b>111.2</b> <b>316.15</b>	APP CON ★ 021°-120° <b>125.4</b> <b>327.125</b> 121°-219° <b>133.75</b> <b>270.35</b> 220°-340° <b>133.45</b> <b>239.275</b> 341°-020° <b>121.1</b> <b>319.25</b>	TOWER ★ <b>135.2</b> (CTAF) <b>248.55</b>	GND CON ★ <b>121.9</b> <b>288.25</b>	CLNC DEL ★ <b>118.075</b> <b>380.1</b>
---------------------------------------	---	---	--	--



ELEV	301	TDZE	298
------	-----	------	-----

# VOR RWY 24

SE-4, 17 APR 2025 to 15 MAY 2025

SE-4, 17 APR 2025 to 15 MAY 2025