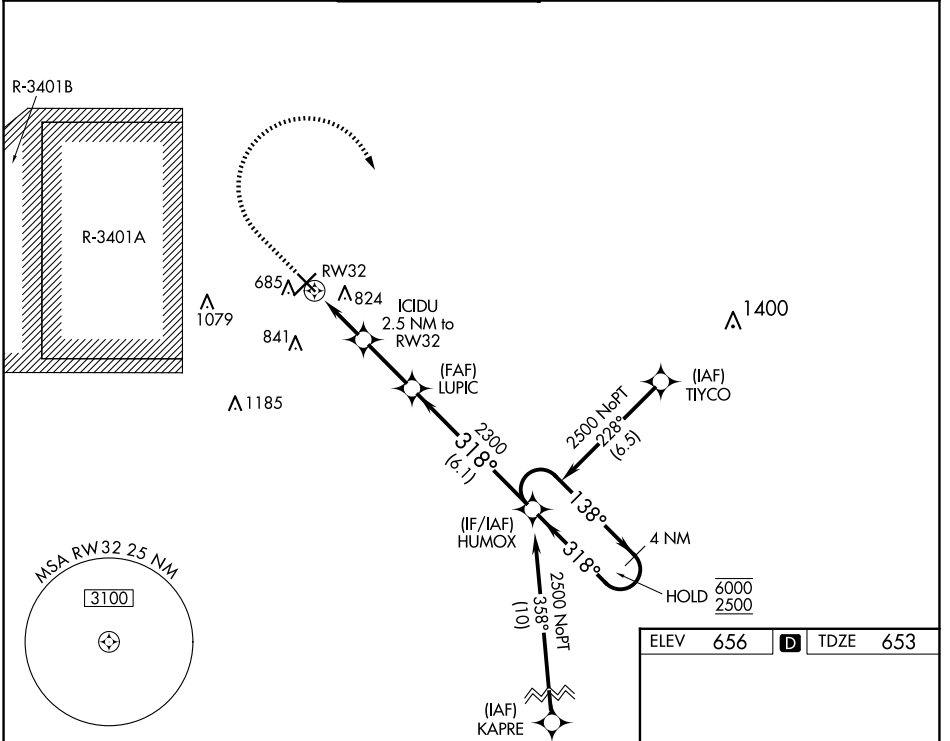


WAAS CH 50399 W32A	APP CRS 318°	Rwy Idg TDZE 653 Apt Elev 656	5000
--	------------------------	---	-------------

RNAV (GPS) RWY 32

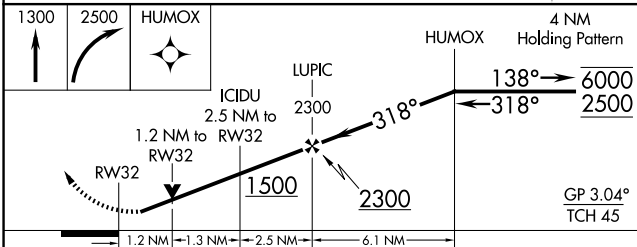
COLUMBUS MUNI (BAK)

RNP APCH - GPS.		MISSED APPROACH: Climb to 1300, then climbing right turn to 2500 direct HUMOX and hold.	
<p>▼ Rwy 32 helicopter visibility reduction below $\frac{3}{4}$ SM NA. For uncompensated Baro-VNAV systems, LNAV/VNAV NA below -16°C or above 54°C.</p>			
AWOS-3 119.75	INDIANAPOLIS APP CON 134.85 317.8	COLUMBUS TOWER ★ 118.6 (CTAF) 0	GND CON 121.6
		CLNC DEL 134.85 (When twr closed)	UNICOM 122.95

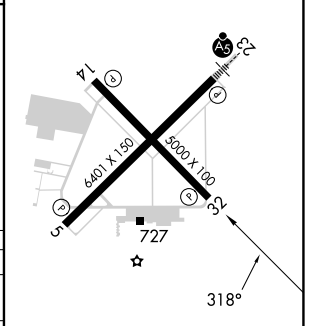


EC-2, 17 APR 2025 to 15 MAY 2025

EC-2, 17 APR 2025 to 15 MAY 2025



ELEV	656	TDZE	653
------	-----	------	-----



CATEGORY	A	B	C	D
LPV DA		903-1	250 (300-1)	
LNAV/VNAV DA		1056-1 $\frac{1}{8}$	403 (400-1 $\frac{1}{8}$)	
LNAV MDA	1080-1	427 (500-1)	1080-1 $\frac{1}{4}$	427 (500-1 $\frac{1}{4}$)

MIRL Rwy 14-32 **1**
 HIRL Rwy 5-23 **1**
 REIL Rws 5, 14, and 32 **1**