

APP CRS	Rwy Idg	7200
137°	TDZE	579
	Apt Elev	589

RNAV (GPS) RWY 14

TERRE HAUTE RGNL (HUF)

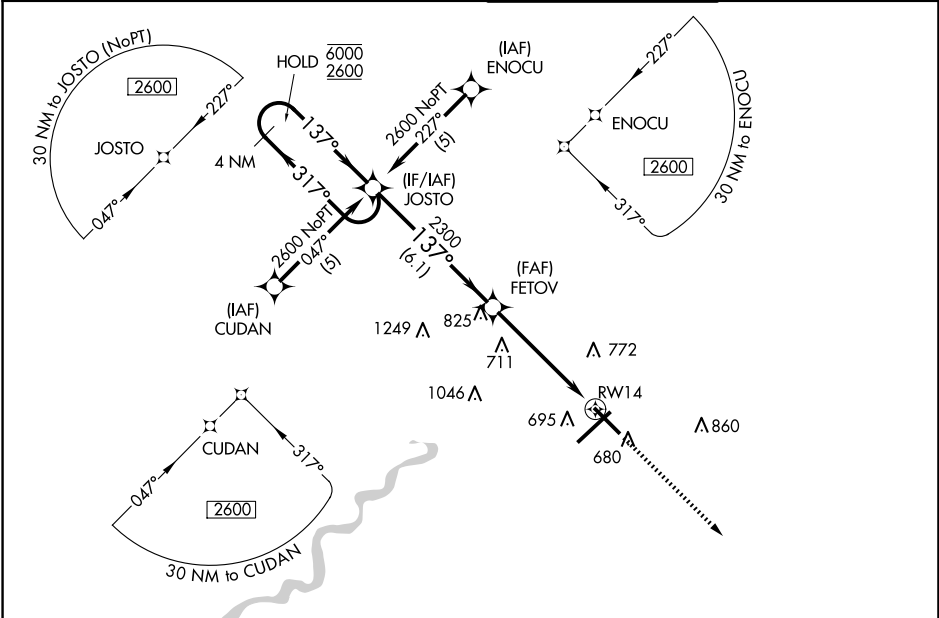
RNP APCH.

V VDP NA when using Paris altimeter setting. When local altimeter setting not received, use Paris altimeter setting and increase all MDA 80 feet, increase LNAV and Circling Cat C/D visibility 1/4 SM. Rwy 14 helicopter visibility reduction below 3/4 SM NA.

A ASR

MISSED APPROACH:
Climb to 2600 direct CORIE and hold.

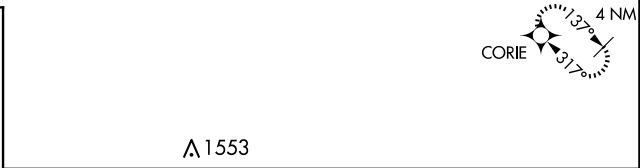
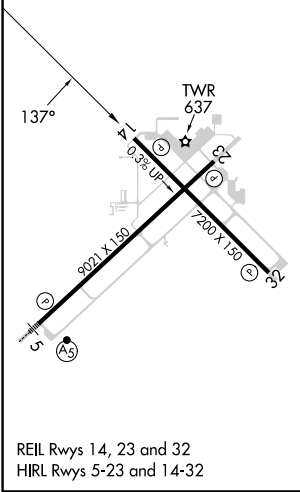
ATIS 127.5 269.375	HULMAN APP CON 125.45 339.8	HULMAN TOWER 134.725 322.475	GND CON 121.6 348.6
------------------------------	---------------------------------------	--	-------------------------------



EC-2, 17 APR 2025 to 15 MAY 2025

EC-2, 17 APR 2025 to 15 MAY 2025

ELEV 589	D	TDZE 579
----------	----------	----------



4 NM Holding Pattern		JOSTO	2600 CORIE	
6000 ← 317°		FETOV	* LNAV only.	
2600 → 137°			* 1.2 NM to RWY 14	
VGSI and descent angles not coincident (VGSI Angle 2.75/TCH 59).		2300	RWY 14	
		6.1 NM	4 NM	1.2

CATEGORY	A	B	C	D
LNAV MDA	1140-1	561 (600-1)	1140-1 5/8	561 (600-1 5/8)
C CIRCLING	1140-1	551 (600-1)	1220-1 3/4 631 (700-1 3/4)	1220-2 631 (700-2)