

APP CRS	Rwy Idg	<b>11247</b>
<b>314°</b>	TDZE	<b>13</b>
	Apt Elev	<b>13</b>

# RNAV (RNP) Z RWY 31L

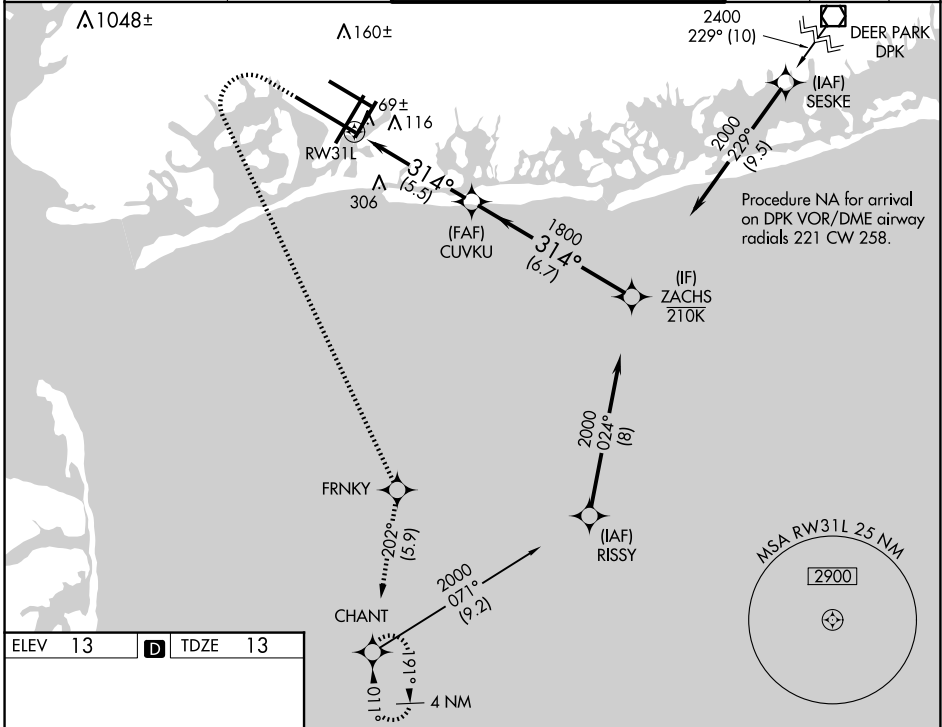
JOHN F KENNEDY INTL (JFK)

RNP AR APCH.

**▼** For uncompensated Baro-VNAV systems, procedure NA below -12°C or above 54°C. Simultaneous approach authorized. Use of FD or AP required during simultaneous operations.

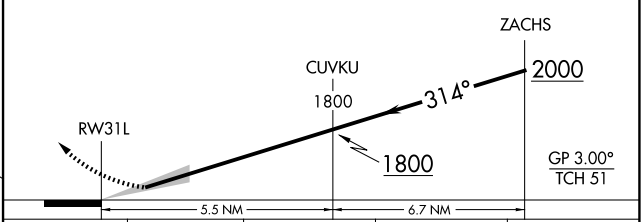
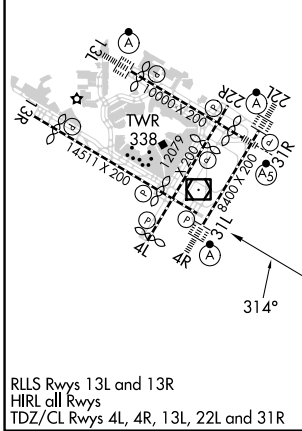
**MISSED APPROACH:** Climb to 500 then climbing left turn to 3000 direct FRNKY and on track 202° to CHANT and hold.

D-ATIS (ARR/DEP)(ARR-NE) (ARR-SW)	NEW YORK APP CON	KENNEDY TOWER Rwys 4R/22L and 13L/31R Rwys 4L/22R and 13R/31L	<b>119.1 281.55</b>	GND CON <b>121.9 348.6</b>	CLNC DEL <b>135.05 348.6</b>	CPDLC
--------------------------------------	------------------	---	---------------------	-------------------------------	---------------------------------	-------



ELEV 13	<b>D</b>	TDZE 13
---------	----------	---------

500	3000	FRNKY	CHANT	VGSI and RNAV glidepath not coincident (VGSI Angle 3.00/TCH 74).
↑	↙	✧	tr 202°	✧



CATEGORY	A	B	C	D
RNP 0.30 DA	410-1% 397 (400-1%)			

## AUTHORIZATION REQUIRED