

LOC/DME I-TQR <b>108.7</b> Chan 24	APP CRS <b>233°</b>	Rwy Idg <b>8002</b> TDZE <b>661</b> Apt Elev <b>668</b>
--	------------------------	---

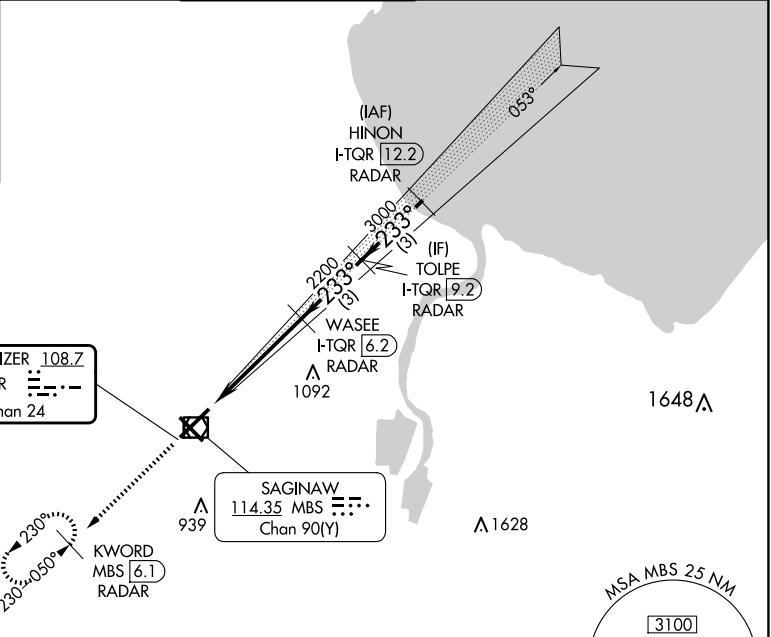
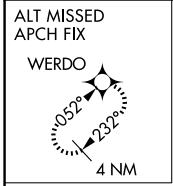
# ILS or LOC RWY 23

MBS INTL (MBS)

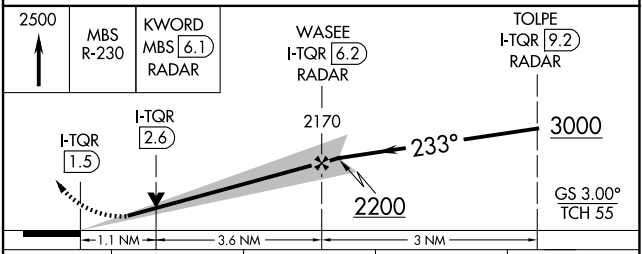
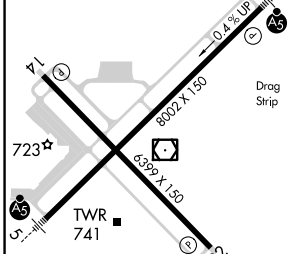
DME or RADAR required. RADAR required for procedure entry.  
 \*RVR 1800 authorized with use of FD or AP or HUD to DA.  
 ⚠

MALS R  
 MISSED APPROACH: Climb to 2500 on MBS VOR/DME R-230 to KWORD/MBS 6.1 DME/RADAR and hold.

ATIS <b>125.925</b>	GREAT LAKES APP CON * <b>126.45 235.625</b>	SAGINAW TOWER * <b>120.1(CTAF) 257.7</b>	GND CON <b>121.7</b>	CLNC DEL <b>121.85</b>	UNICOM <b>122.95</b>
------------------------	--	---	-------------------------	---------------------------	-------------------------



ELEV 668	<b>D</b>	TDZE 661
----------	----------	----------



REIL Rwy 14 and 32	HIRL Rwy 5-23 and 14-32	FAF to MAP 4.7 NM																				
Knots 60 90 120 150 180	Min:Sec 4:42 3:08 2:21 1:53 1:34																					
<table border="1"> <tr> <th>CATEGORY</th> <th>A</th> <th>B</th> <th>C</th> <th>D</th> </tr> <tr> <td>S-ILS 23 *</td> <td colspan="4">861/24 200 (200-1/2)</td> </tr> <tr> <td>S-LOC 23</td> <td>1060/24 399 (400-1/2)</td> <td colspan="2">1060/35 399 (400-3/4)</td> <td></td> </tr> <tr> <td><b>C</b> CIRCLING</td> <td>1080-1 412 (500-1)</td> <td>1120-1 452 (500-1)</td> <td>1240-1 1/2 572 (600-1/2)</td> <td>1240-2 572 (600-2)</td> </tr> </table>	CATEGORY	A	B	C	D	S-ILS 23 *	861/24 200 (200-1/2)				S-LOC 23	1060/24 399 (400-1/2)	1060/35 399 (400-3/4)			<b>C</b> CIRCLING	1080-1 412 (500-1)	1120-1 452 (500-1)	1240-1 1/2 572 (600-1/2)	1240-2 572 (600-2)		
CATEGORY	A	B	C	D																		
S-ILS 23 *	861/24 200 (200-1/2)																					
S-LOC 23	1060/24 399 (400-1/2)	1060/35 399 (400-3/4)																				
<b>C</b> CIRCLING	1080-1 412 (500-1)	1120-1 452 (500-1)	1240-1 1/2 572 (600-1/2)	1240-2 572 (600-2)																		

EC-1, 17 APR 2025 to 15 MAY 2025

EC-1, 17 APR 2025 to 15 MAY 2025