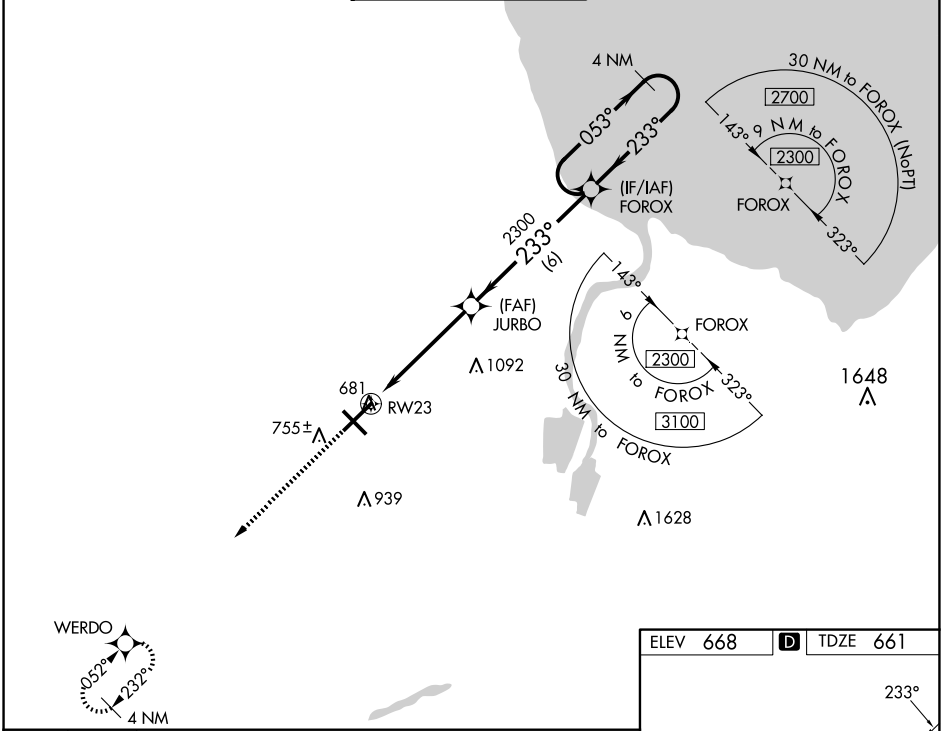


WAAS CH <b>49010</b> <b>W23A</b>	APP CRS <b>233°</b>	Rwy Idg TDZE Apt Elev	<b>8002</b> <b>661</b> <b>668</b>
--	------------------------	-----------------------------	---

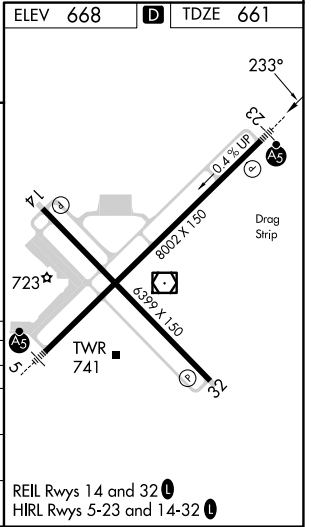
# RNAV (GPS) RWY 23

MBS INTL (MBS)

<p><b>▽</b> For uncompensated Baro-VNAV systems, LNAV/VNAV NA below -18°C (0°F) or above 54°C (130°F). DME/DME RNP-0.3 NA. For inoperative ALS, increase LNAV/VNAV all Cats visibility to RVR 4500. # RVR 1800 authorized with use of FD or AP or HUD to DA.</p>		<p>MALSR AS</p>	<p>MISSED APPROACH: Climb to 2300 direct WERDO and hold.</p>		
ATIS <b>125.925</b>	GREAT LAKES APP CON * <b>126.45 235.625</b>	SAGINAW TOWER * <b>120.1 (CTAF) 257.7</b>	GND CON <b>121.7</b>	CLNC DEL <b>121.85</b>	UNICOM <b>122.95</b>



2300	WERDO	JURBO	FOROX	4 NM Holding Pattern
*LNAV only	*1.1 NM to RW23	2300	233°	053° → 2300 ← 233°
				GP 3.00° TCH 54
	1.1	3.9 NM	6 NM	
CATEGORY	A	B	C	D
LPV DA #		861/24	200 (200-½)	
LNAV/VNAV DA		940/24	279 (300-½)	
LNAV MDA	1060/24	399 (400-½)	1060/35	399 (400-¾)
CIRCLING	1080-1 412 (500-1)	1120-1 452 (500-1)	1240-1½ 572 (600-1½)	1240-2 572 (600-2)



EC-1, 17 APR 2025 to 15 MAY 2025

EC-1, 17 APR 2025 to 15 MAY 2025