

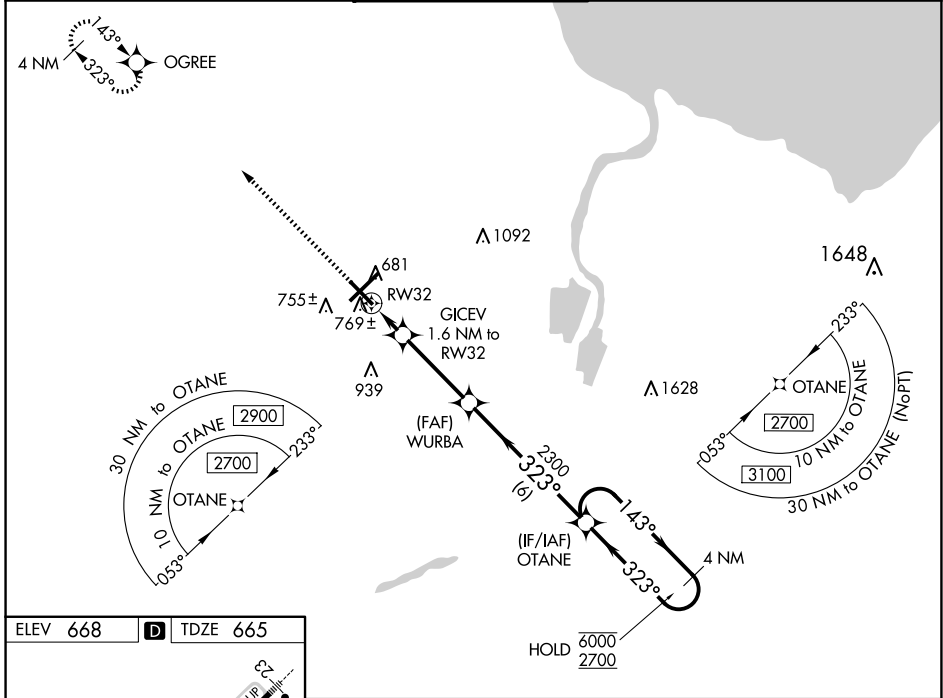
WAAS CH 78011 W32A	APP CRS 323°	Rwy Idg TDZE Apt Elev	6399 665 668
---------------------------------	------------------------	-----------------------------	---

RNAV (GPS) RWY 32

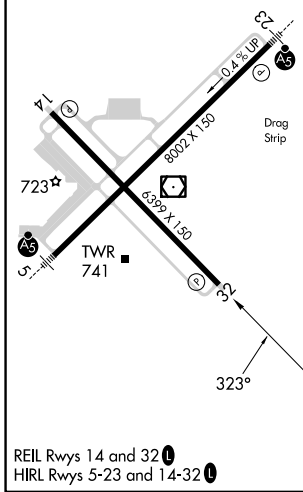
MBS INTL (MBS)

RNP APCH.		MISSED APPROACH: Climb to 2300 direct OGREE and hold.			
For uncompensated Baro-VNAV systems, LNAV/VNAV NA below -18°C or above 54°C.					

ATIS 125.925	GREAT LAKES APP CON * 126.45 235.625	SAGINAW TOWER * 120.1 (CTAF) 0 257.7	GND CON 121.7	CLNC DEL 121.85	UNICOM 122.95
------------------------	--	--	-------------------------	---------------------------	-------------------------



ELEV 668	D	TDZE 665
----------	----------	----------



2300	OGREE	4 NM Holding Pattern		
* LNAV only.		GICEV 1.6 NM to RW32	WURBA 2300	OTANE 4 NM Holding Pattern
		* 1 NM to RW32	* 1220	2300
		1 NM	0.6 NM	3.4 NM
		6 NM		
CATEGORY	A	B	C	D
LPV DA		865-3/4	200 (200-3/4)	
LNAV/VNAV DA		950-7/8	285 (300-7/8)	
LNAV MDA		1020-1	355 (400-1)	
C CIRCLING	1080-1 412 (500-1)	1120-1 452 (500-1)	1240-1 1/2 572 (600-1 1/2)	1240-2 572 (600-2)

EC-1, 17 APR 2025 to 15 MAY 2025

EC-1, 17 APR 2025 to 15 MAY 2025