

WAAS CH <b>82010</b> <b>W05A</b>	APP CRS <b>053°</b>	Rwy Idg TDZE Apt Elev	<b>8002</b> <b>666</b> <b>668</b>
--	------------------------	-----------------------------	---

# RNAV (GPS) RWY 5

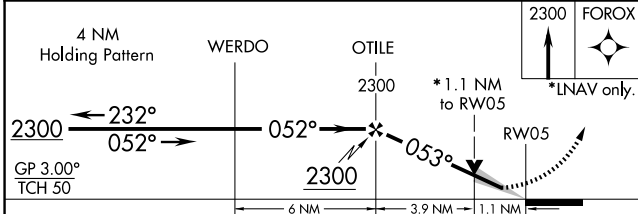
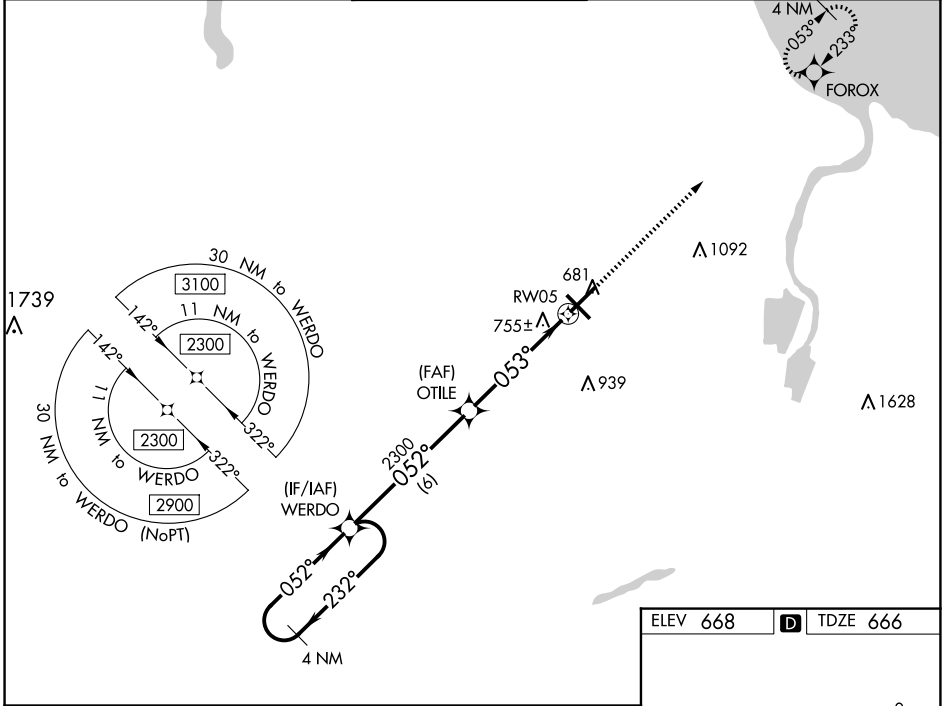
MBS INTL (MBS)

▼ For uncompensated Baro-VNAV systems, LNAV/VNAV NA below -18°C (0°F) or above 54°C (130°F). DME/DME RNP-0.3 NA. For inoperative ALS, increase LNAV/VNAV all Cats visibility to RVR 4500 and LNAV Cats C/D visibility to RVR 6000.  
\*\* RVR 1800 authorized with use of FD or AP or HUD to DA.

MALSRL

MISSED APPROACH:  
Climb to 2300 direct FOROX and hold.

ATIS <b>125.925</b>	GREAT LAKES APP CON* <b>126.45 235.625</b>	SAGINAW TOWER * <b>120.1(CTAF) 0 257.7</b>	GND CON <b>121.7</b>	CLNC DEL <b>121.85</b>	UNICOM <b>122.95</b>
------------------------	---	---	-------------------------	---------------------------	-------------------------



ELEV 668 D TDZE 666

RWY 5 diagram showing runway layout, taxiway, and MALSRL. The runway is 6380 x 130 ft. The taxiway is 8002 x 150 ft. The MALSRL is 6380 x 150 ft. The runway is marked with 5-23 and 32-14. The taxiway is marked with 11-19 and 10-18. The MALSRL is marked with 23-32 and 14-32. The diagram also shows a Drag Strip and a Tower (TWR 741).

CATEGORY	A	B	C	D
LPV DA**		866/24	200 (200-½)	
LNAV/ VNAV DA		955/24	289 (300-½)	
LNAV MDA	1080/24	414 (500-½)	1080/40	414 (500-¾)
<span style="border: 1px solid black; padding: 0 2px;">C</span> CIRCLING	1080-1 412 (500-1)	1120-1 452 (500-1)	1240-1½ 572 (600-1½)	1240-2 572 (600-2)

EC-1, 17 APR 2025 to 15 MAY 2025

EC-1, 17 APR 2025 to 15 MAY 2025