

# TAYTR ONE ARRIVAL (RNAV)

AL-683 (FAA)

PROVO, UTAH

SW-4, 17 APR 2025 to 15 MAY 2025

**ARRIVAL ROUTE DESCRIPTION**

FRNZY TRANSITION (FRNZY.TAYTR1)

JAMMN TRANSITION (JAMMN.TAYTR1)

KNOLE TRANSITION (KNOLE.TAYTR1)

NEEBO TRANSITION (NEEBO.TAYTR1)

SPANE TRANSITION (SPANE.TAYTR1)

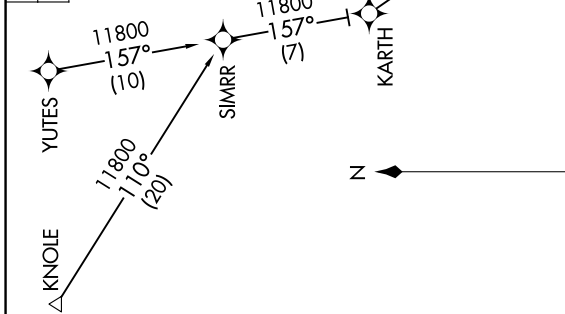
YMONT TRANSITION (YMONT.TAYTR1)

YUTES TRANSITION (YUTES.TAYTR1)

**LANDING PVU:** From TAYTR, expect ILS or LOC RWY 13 or RNAV (GPS) RWY 13 approach.

**LANDING SPK:** From TAYTR, expect RNAV (GPS) Y RWY 12 or RNAV (GPS) Z RWY 12 approach.

RNAV 1 - GPS.	SALT LAKE CITY APP CON 118.85 233.7
RADAR required.	PVU ATIS 135.175



# TAYTR ONE ARRIVAL (RNAV)

PROVO, UTAH

NOTE: GPS required.

NOTE: FRNZY Transition, ATC assigned only.

NOTE: Chart not to scale.

SW-4, 17 APR 2025 to 15 MAY 2025