

LOC I-FTY 109.1	APP CRS 085°	Rwy Idg TDZE Apt Elev 5797 808 841
---------------------------	------------------------	------------------------------------------------------------------------

ILS or LOC RWY 8

FULTON COUNTY EXEC/CHARLIE BROWN FLD (F'TY)

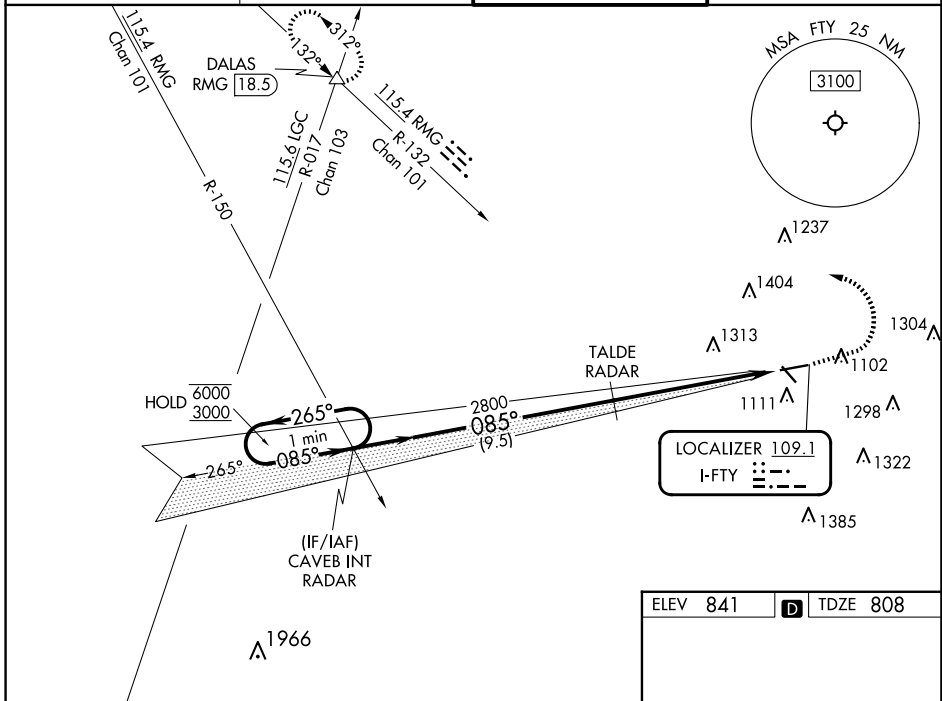
RADAR required to define TALDE.
RADAR required for procedure entry.

⚠ Circling Rwy 14, 32 NA at night. Rwy 8 helicopter visibility reduction below 3/4 SM NA.
⚠ For inop ALS, increase S-LOC 8 Cat A visibility to 1 SM, Cat C/D visibility to 2 1/2 SM.
Ridge with trees to 1299' MSL between FAF and runway threshold may be obscured by clouds even with airfield ceiling at or above procedure minimums.



MISSED APPROACH: Climb to 1800 then climbing left turn to 4000 on heading 290° and RMG R-132 to DALAS INT/ RMG VORTAC 18.5 DME and hold.

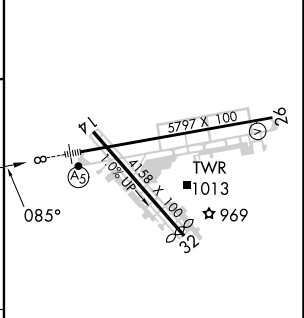
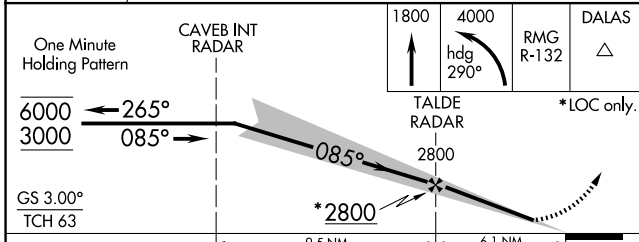
ATIS 120.175	ATLANTA APP CON 121.0 268.7	FULTON COUNTY TOWER 118.45 257.8	GND CON 121.7 348.6
------------------------	---------------------------------------	--------------------------------------------	-------------------------------



SE-4, 17 APR 2025 to 15 MAY 2025

SE-4, 17 APR 2025 to 15 MAY 2025

ELEV 841	D TDZE 808
----------	-------------------



One Minute Holding Pattern	CAVEB INT RADAR	1800	4000	RMG R-132	DALAS
6000 ← 265°	→ 085°	↑	hdg 290°	△	
3000		TALDE RADAR			*LOC only.
GS 3.00°		2800			
TCH 63		*2800			
		9.5 NM	6.1 NM		
CATEGORY	A	B	C	D	
S-ILS 8	1058-1/2 250 (300-1/2)				
S-LOC 8	1640-3/4	832 (800-3/4)	1640-17/8	832 (800-17/8)	
C CIRCLING	1640-1	1640-1 1/4	1740-2 3/4	1740-3	
	799 (800-1)	799 (800-1 1/4)	899 (900-2 3/4)	899 (900-3)	

HIRL Rwy 8-26	
REIL Rwys 14, 26	
FAF to MAP 6.1 NM	
Knots	60 90 120 150 180
Min:Sec	6:06 4:04 3:03 2:26 2:02