

WAAS CH 82737 W36A	APP CRS 357°	Rwy Idg TDZE Apt Elev	5301 934 934
--	------------------------	-----------------------------	---

RNAV (GPS) RWY 36

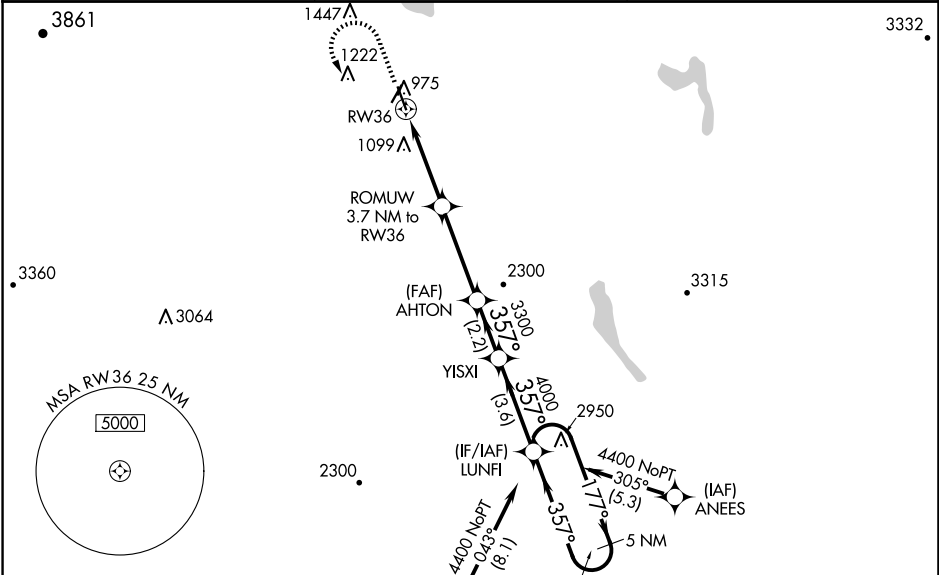
NORTHEAST KINGDOM INTL (EFK)

RNP APCH - GPS.

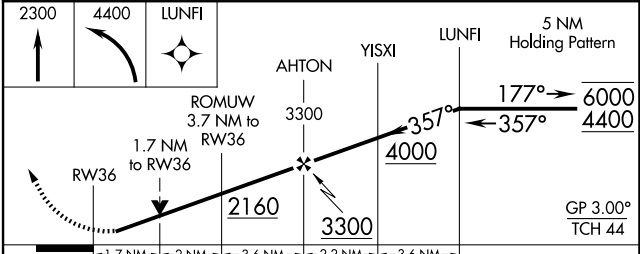
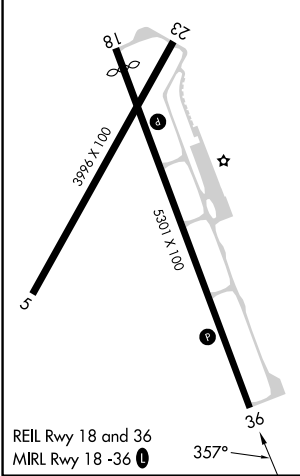
⚠ Circling to Rwy 5 and 23 NA at night. Rwy 36 helicopter visibility reduction below 3/4 SM NA. For uncompensated Baro-VNAV systems, LNAV/VNAV NA below -16°C or above 54°C.
⚠ When local altimeter setting not received, use MVL altimeter setting and increase LPV DA to 1275 feet and all visibilities 1/4 SM; increase LNAV/VNAV DA to 1557 feet and all visibilities 1/4 SM; increase all MDAs 100 feet and LNAV visibility Cat C 3/8 SM. Baro-VNAV and VDP NA when using MVL altimeter setting.

MISSED APPROACH:
Climb to 2300 then climbing left turn to 4400 direct LUNFI and hold.

AWOS-3P 118.275	BOSTON CENTER 135.7 282.2	UNICOM 122.8 (CTAF) Ⓛ
---------------------------	-------------------------------------	--



ELEV 934	TDZE 934
----------	----------



CATEGORY	A	B	C	D
LPV DA	1185-3/4	251 (300-3/4)		NA
LNAV/VNAV DA	1467-1 1/2	533 (600-1 1/2)		NA
LNAV MDA	1520-1	586 (600-1)	1520-1 3/4 586 (600-1 3/4)	NA
C CIRCLING	1520-1 586 (600-1)	1600-1 666 (700-1)	1980-3 1046 (1100-3)	NA

NE-1, 17 APR 2025 to 15 MAY 2025

NE-1, 17 APR 2025 to 15 MAY 2025