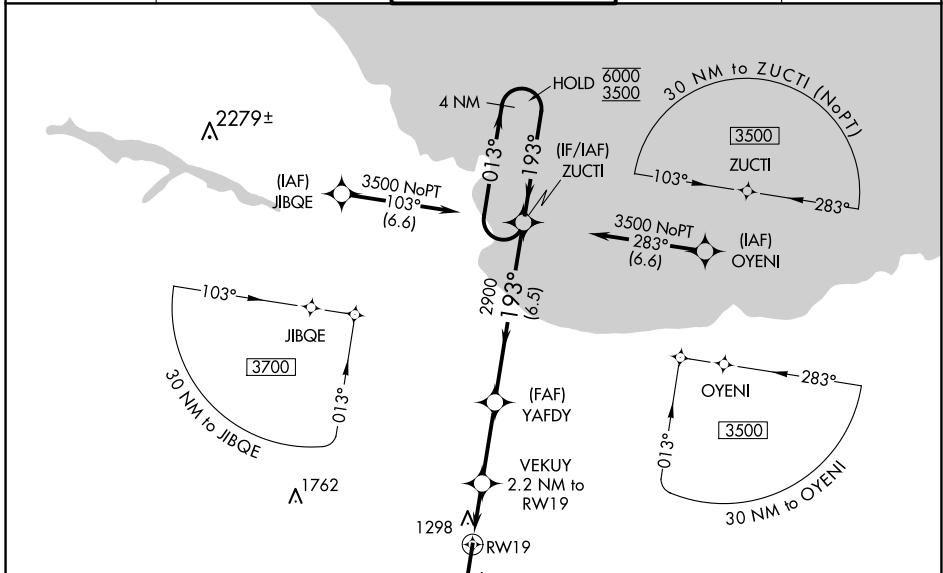


WAAS CH <b>86616</b> <b>W19A</b>	APP CRS <b>193°</b>	Rwy Idg TDZE Apt Elev	<b>9072</b> <b>1204</b> <b>1204</b>
--	------------------------	-----------------------------	---

# RNAV (GPS) RWY 19

MARQUETTE/SAWYER RGNL (SAW)

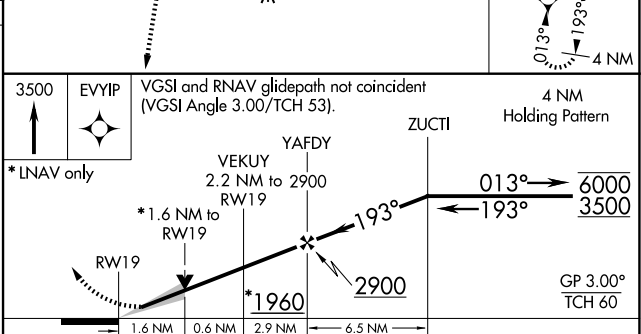
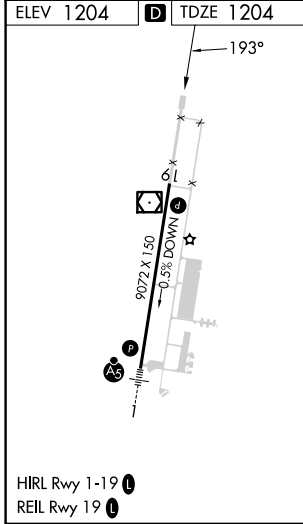
RNP APCH. ▼ For uncompensated Baro-VNAV systems, LNAV/VNAV NA below -17°C or above 54°C.		MISSED APPROACH: Climb to 3500 direct EVYIP and hold.		
AWOS-3PT <b>118.375</b>	MINNEAPOLIS CENTER <b>119.1 290.2</b>	SAWYER TOWER ★ <b>119.975</b> (CTAF) <b>1</b>	GND CON <b>121.65</b>	UNICOM <b>122.7</b>



EC-1, 17 APR 2025 to 15 MAY 2025

EC-1, 17 APR 2025 to 15 MAY 2025

ELEV 1204	<b>D</b> TDZE 1204
-----------	--------------------



3500	EVYIP	VGSi and RNAV glidepath not coincident (VGSi Angle 3.00/TCH 53).		4 NM Holding Pattern
* LNAV only		YAFDY	ZUCTI	
		VEKUY 2.2 NM to RW19		
		* 1.6 NM to RW19		
		RW19		
		* 1960	2900	GP 3.00° TCH 60
		1.6 NM	0.6 NM	2.9 NM
				6.5 NM
CATEGORY	A	B	C	D
LPV DA		1404- <sup>3</sup> / <sub>4</sub>	200 (200- <sup>3</sup> / <sub>4</sub> )	
LNAV/VNAV DA		1521- <sup>7</sup> / <sub>8</sub>	317 (400- <sup>7</sup> / <sub>8</sub> )	
LNAV MDA	1620-1	416 (500-1)	1620-1 <sup>1</sup> / <sub>8</sub>	416 (500-1 <sup>1</sup> / <sub>8</sub> )
<b>C</b> CIRCLING	1680-1	476 (500-1)	1820-1 <sup>3</sup> / <sub>4</sub>	1820-2
			616 (700-1 <sup>3</sup> / <sub>4</sub> )	616 (700-2)