

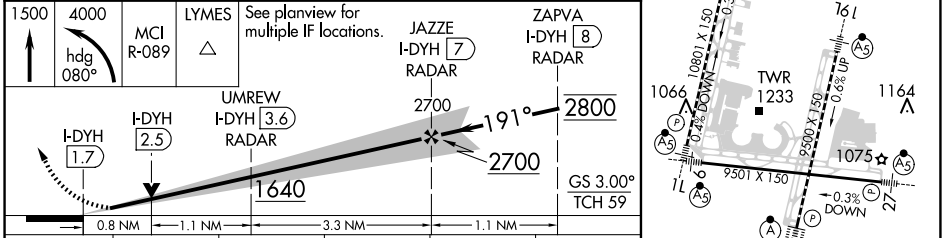
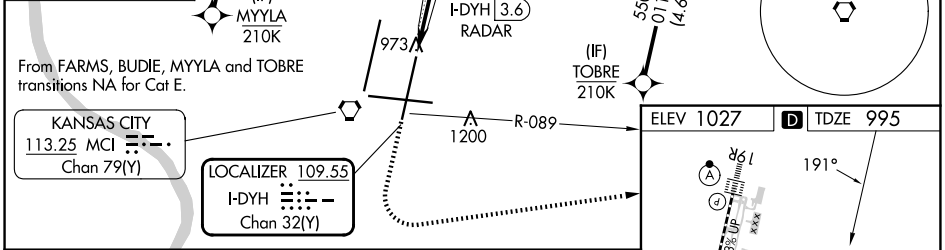
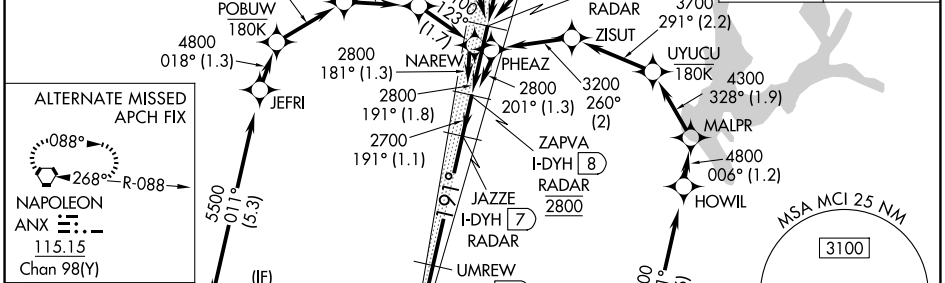
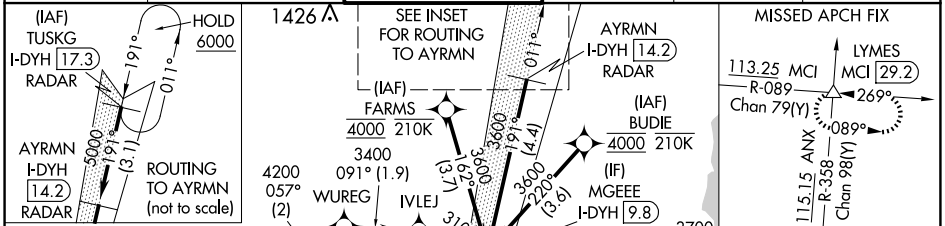
LOC/DME I-DYH 109.55 Chan 32(Y)	APP CRS 191°	Rwy Idg 9500 TDZE 995 Apt Elev 1027
--	------------------------	--

ILS or LOC RWY 19L

KANSAS CITY INTL (MCI)

RNP APCH - GPS. From FARMS or BUDIE or MYLLA or TOBRE.	MALSR	MISSED APPROACH: Climb to 1500 then climbing left turn to 4000 on heading 080° and MCI VORTAC R-089 to LYMES INT/ MCI 29.2 DME and hold.
DME or RADAR required. RADAR required for procedure entry at TUSKG.		
For inop ALS, increase S-ILS 19L Cat E visibility to RVR 4000 and S-LOC 19L Cat C/D/E visibility to RVR 4500. Simultaneous approach authorized except from BUDIE, FARMS, TOBRE, and MYLLA.		

D-ATIS 128.375	KANSAS CITY APP CON 120.95 318.1	INTERNATIONAL TOWER 128.2 254.25	GND CON 121.8	CLNC DEL 135.7	CPDLC
--------------------------	--	--	-------------------------	--------------------------	-------



ELEV 1027	TDZE 995					
1500	4000	MCI R-089	LYMES	See planview for multiple IF locations.	JAZZE I-DYH 7	ZAPVA I-DYH 8
hdg 080°						
UMREW I-DYH 3.6	JAZZE I-DYH 7	ZAPVA I-DYH 8				
1640	2700	2700	2800			
0.8 NM	1.1 NM	3.3 NM	1.1 NM			
GS 3.00°	TCH 59					
CATEGORY	A	B	C	D	E	
S-ILS 19L		1195/18	200 (200-½)			
S-LOC 19L		1280/24	285 (300-½)			
CIRCLING	1540-1	513 (600-1)	1540-1½ 513 (600-1½)	1580-2	553 (600-2)	
HIRL all Rwws						
TDZ/CL Rwws 1L, 1R, 19L and 19R						
FAF to MAP 5.2 NM						
Knots	60	90	120	150	180	
Min:Sec	5:12	3:28	2:36	2:05	1:44	

NC-3, 17 APR 2025 to 15 MAY 2025

NC-3, 17 APR 2025 to 15 MAY 2025