


RNAV (RNP) Z RWY 27 KANSAS CITY INTL (MCI)

APP CRS	Rwy Idg	9501
274°	TDZE	1027
	Apt Elev	1027

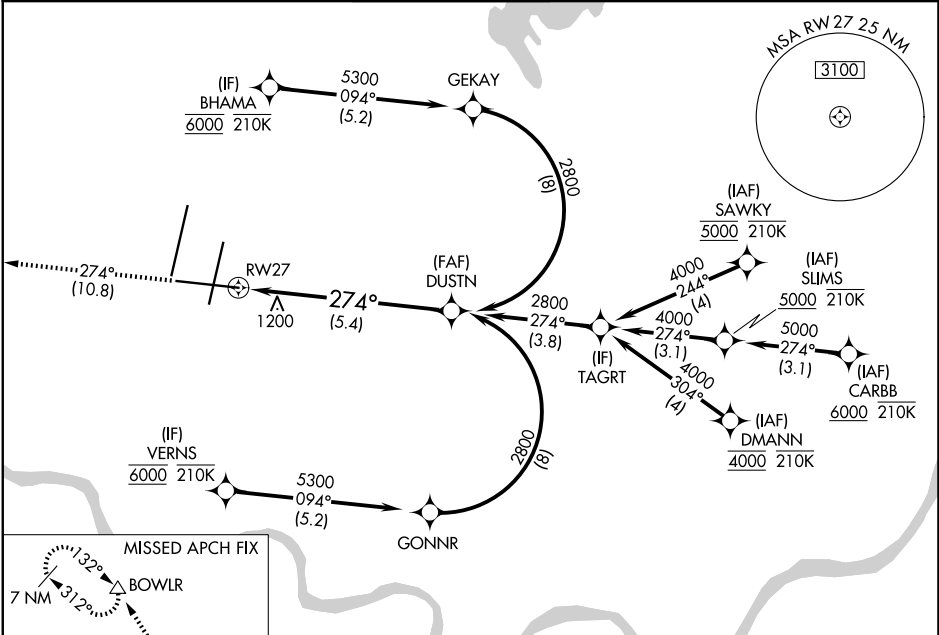
RADAR required for procedure entry. RNP AR APCH - GPS.

▼ For uncompensated Baro-VNAV systems, procedure NA below -19°C or above 54°C. For inop ALS, increase RNP 0.15 all Cats visibility to RVR 5500 and RNP 0.30 all Cats visibility to 1 3/8 SM.

MALSR 

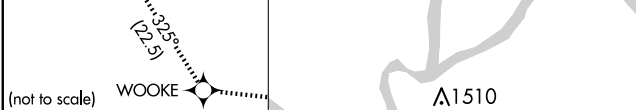
MISSED APPROACH: Climb to 4000 on track 274° to WOOKIE and on track 325° to BOWLW and hold.

D-ATIS 128.375	KANSAS CITY APP CON 120.95 318.1	INTERNATIONAL TOWER 128.2 254.25	GND CON 121.8	CLNC DEL 135.7	CPDLC
--------------------------	--	--	-------------------------	--------------------------	-------

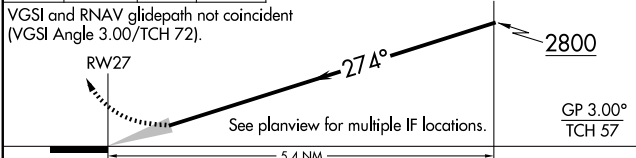


NC-3, 17 APR 2025 to 15 MAY 2025

NC-3, 17 APR 2025 to 15 MAY 2025



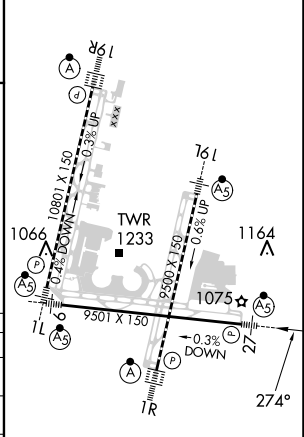
4000	WOOKE	BOWLW
↑	◆	△
tr 274°	tr 325°	



CATEGORY	A	B	C	D
RNP 0.15 DA		1371/30	344 (400-%)	
RNP 0.30 DA		1506/50	479 (500-1)	

AUTHORIZATION REQUIRED

ELEV 1027	TDZE 1027
-----------	-----------



HIRL all Rwys
TDZ/CL Rwys 1L, 1R, 19R and 19L