

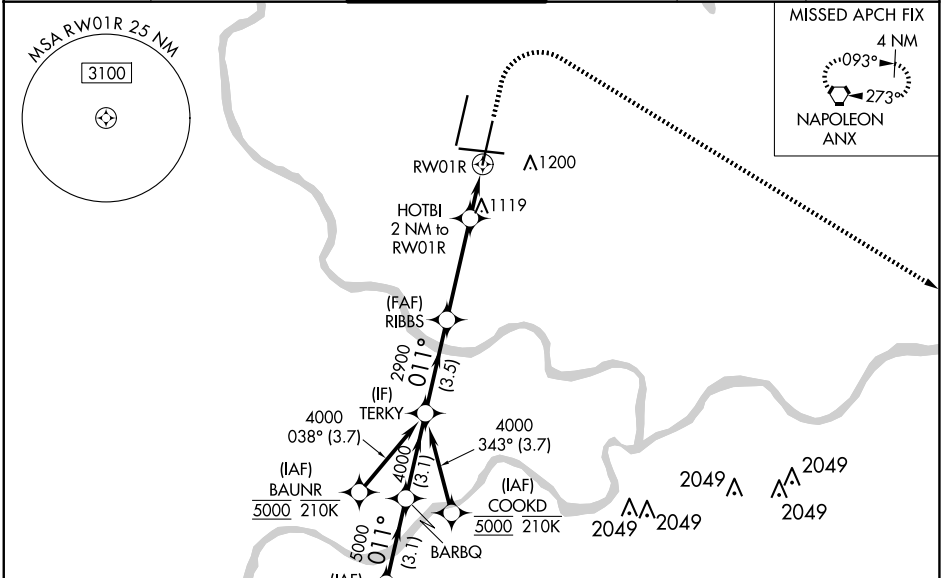
WAAS CH 58208 W01A	APP CRS 011°	Rwy Idg 9500 TDZE 1017 Apt Elev 1027
---------------------------------	------------------------	---

RNAV (GPS) Y RWY 1R

KANSAS CITY INTL (MCI)

RNP APCH - GPS.	ALSF-2	MISSED APPROACH: Climb to 1500 then climbing right turn to 4000 direct ANX VORTAC and hold.
-----------------	--------	---

D-ATIS 128.375	KANSAS CITY APP CON 120.95 318.1	INTERNATIONAL TOWER 128.2 254.25	GND CON 121.8	CLNC DEL 135.7	CPDLC
--------------------------	--	--	-------------------------	--------------------------	-------



NC-3, 17 APR 2025 to 15 MAY 2025

NC-3, 17 APR 2025 to 15 MAY 2025

	ELEV 1027	TDZE 1017		
	HIRL all Rwys TDZ/CL Rwys 1L, 1R, 19R and 19L			
SPICY	VGSI and RNAV glidepath not coincident (VGSI Angle 3.00/TCH 74).	1500 4000 ANX		
6000	5000	4000		
GP 3.00°	2900	1700		
TCH 59	1700	0.9 NM to RWY 1R		
		RWY 1R		
CATEGORY	A	B	C	D
LPV DA	1217/18		200 (200-½)	
LNAV/VNAV DA	1311/24		294 (300-½)	
LNAV MDA	1380/24	363 (400-½)	1380/35	363 (400-¾)
CIRCLING	1540-1	513 (600-1)	1540-1½	513 (600-1½)
			1580-2	553 (600-2)

