

| | | | |
|--|------------------------|-----------------------------|---|
| WAAS CH 56315 W34A | APP CRS 337° | Rwy Idg TDZE Apt Elev | 7203 796 799 |
|--|------------------------|-----------------------------|---|

RNAV (GPS) RWY 34

CHIPPEWA COUNTY INTL (CIU)

RNP APCH.

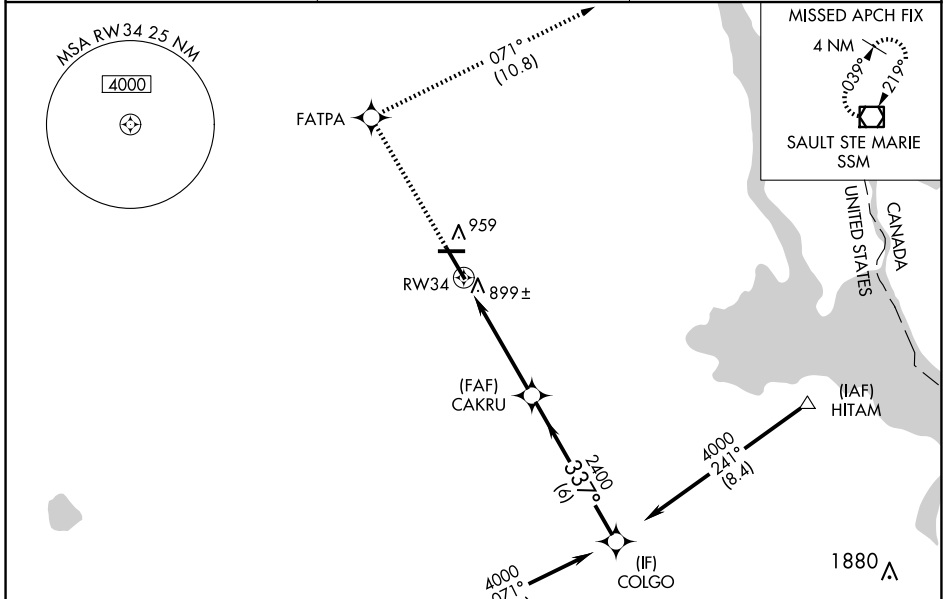
▼ For uncompensated Baro-VNAV systems, LNAV/VNAV NA below -16°C or above 54°C.
▲ When local altimeter setting not received, use Sault Ste Marie Muni/Sanderson Fld altimeter setting; increase LPV DA to 1091 feet, LNAV/VNAV DA to 1243 feet and all MDA 60 feet; increase LNAV Cat D visibility ¼ SM. Baro-VNAV and VDP NA when using Sault Ste Marie Muni/Sanderson Fld altimeter setting.

MISSED APPROACH:
 Climb to 3000 direct
 FATPA and track 071° to
 SSM VOR/DME and hold.

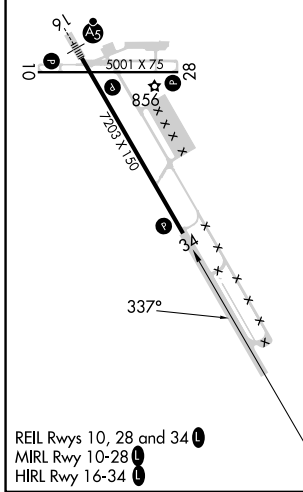
AWOS-3PT
127.575

TORONTO CENTER
132.65 344.5

UNICOM
123.0 (CTAF)



| | | |
|----------|----------|----------|
| ELEV 799 | D | TDZE 796 |
|----------|----------|----------|



Procedure NA for arrival at PINES via V193 southbound.

| | | | | | |
|--------------------|--------|-------------|-----------------|--------------|-------------|
| COLGO | CAKRU | 3000 | FATPA | tr 071° | SSM |
| 4000 | 2400 | | | | |
| GP 3.00° TCH 40 | 337° | 2400 | *1.2 NM to RW34 | *LNAV only. | |
| | 6 NM | 3.7 NM | 1.2 NM | | |
| CATEGORY | A | B | C | D | |
| LPV DA | | 1046-1 | 250 (300-1) | | |
| LNAV/DA VNAV | | 1198-1½ | 402 (400-1½) | | |
| LNAV MDA | 1200-1 | 404 (500-1) | 1200-1¼ | 404 (500-1¼) | |
| C CIRCLING | 1260-1 | 461 (500-1) | 1260-1½ | 1360-2 | 561 (600-2) |
| | | | 461 (500-1½) | | |

EC-1, 17 APR 2025 to 15 MAY 2025

EC-1, 17 APR 2025 to 15 MAY 2025