

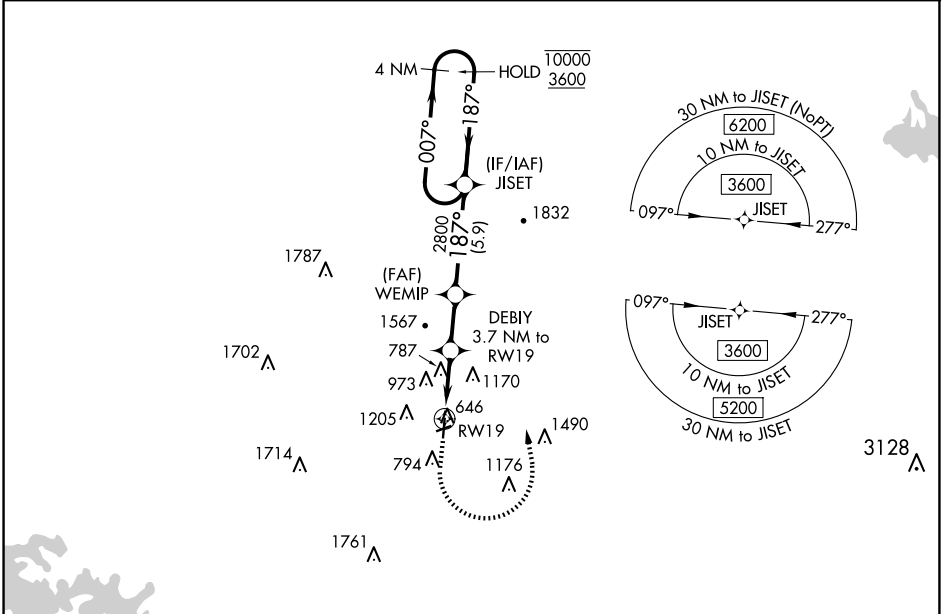
WAAS CH <b>48811</b> <b>W19A</b>	APP CRS <b>187°</b>	Rwy Idg TDZE Apt Elev	<b>6006</b> <b>635</b> <b>644</b>
--	------------------------	-----------------------------	---

# RNAV (GPS) RWY 19

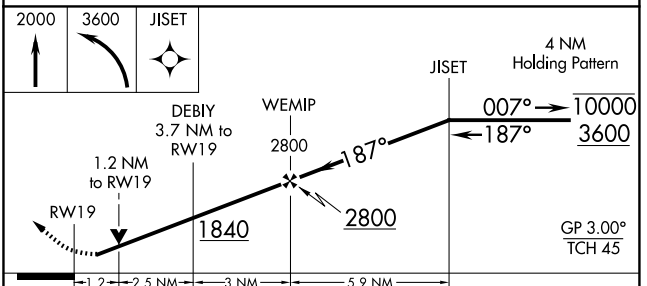
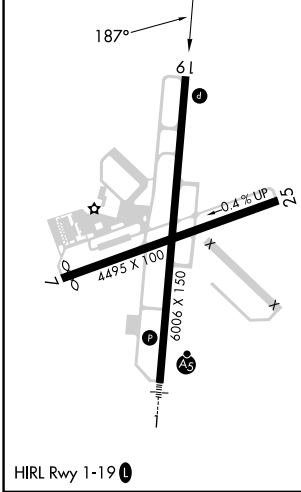
RICHARD B RUSSELL RGNL - J H TOWERS FLD (RMG)

RNP APCH - GPS.	MISSED APPROACH: Climb to 2000 then climbing left turn to 3600 direct JISET and hold.
<p><b>⚠</b> Rwy 19 helicopter visibility reduction below 3/4 SM NA. For uncompensated Baro-VNAV systems, LNAV/VNAV NA below -7°C or above 54°C. Circling NA west of Rwy 1-19 at night. Circling NA northwest of Rwy 7 and 19.</p>	

ASOS <b>119.925</b>	ATLANTA CENTER <b>124.5 270.325</b>	GCO <b>121.725</b>	UNICOM <b>122.725 (CTAF)</b>
------------------------	--	-----------------------	---------------------------------



ELEV 644	<b>D</b>	TDZE 635
----------	----------	----------



CATEGORY	A	B	C	D
LPV DA		995-1	360 (400-1)	
LNAV/VNAV DA		1003-1	368 (400-1)	
LNAV MDA	1040-1	405 (400-1)	1040-1½	405 (400-1½)
<b>C</b> CIRCLING	1140-1 496 (500-1)	1200-1 556 (600-1)	1480-2½ 836 (900-2½)	1840-3 1196 (1200-3)

SE-4, 17 APR 2025 to 15 MAY 2025

SE-4, 17 APR 2025 to 15 MAY 2025