

WAAS CH 86527 W14A	APP CRS 140°	Rwy Idg TDZE Apt Elev	4000 996 1001
--	------------------------	-----------------------------	--

RNAV (GPS) RWY 14

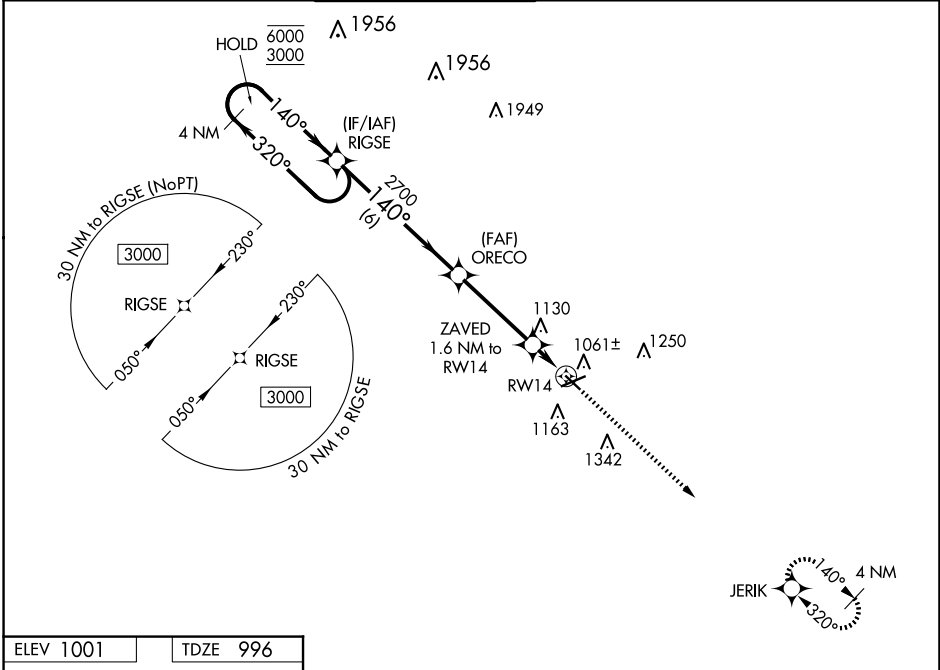
JACKSON COUNTY/REYNOLDS FLD (JXN)

RNP APCH - GPS.

▼ Rwy 14 helicopter visibility reduction below 3/4 SM NA. For uncompensated Baro-VNAV systems, LNAV/VNAV NA below -23°C or above 54°C.

MISSED APPROACH: Climb to 3000 direct JERIK and hold.

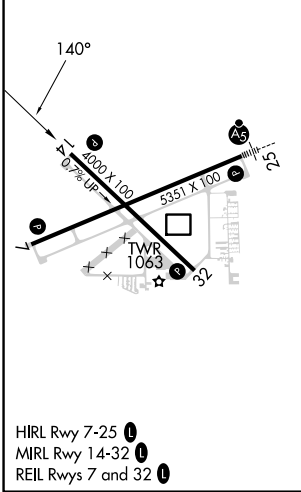
ATIS 125.725	GREAT LAKES APP CON * 127.3 335.575	JACKSON TOWER * 128.475(CTAF) 257.8	GND CON 121.9	CLNC DEL 121.9	UNICOM 122.95
------------------------	---	---	-------------------------	--------------------------	-------------------------



EC-1, 17 APR 2025 to 15 MAY 2025

EC-1, 17 APR 2025 to 15 MAY 2025

ELEV 1001	TDZE 996
-----------	----------



HIRL Rwy 7-25
MIRL Rwy 14-32
REL Rwy 7 and 32

4 NM Holding Pattern		VGSi and RNAV glidepath not coincident (VGSi Angle 3.00/TCH 25).		3000	JERIK
6000 ← 320°		→ 140°		↑	✧
3000		2700			
GP 3.00°		2700		ZAVED 1.6 NM to RW14	
		1540		RW14	
		6 NM		3.6 NM	
				1.6 NM	
CATEGORY	A	B	C	D	
LPV DA		1345-1	349 (400-1)		
LNAV/VNAV DA		1463-1 3/8	467 (500-1 3/8)		
LNAV MDA	1380-1	384 (400-1)	1380-1 1/8	384 (400-1 1/8)	
C CIRCLING	1480-1	479 (500-1)	1660-1 3/4	1660-2	659 (700-2)
			659 (700-1 3/4)		