

WAAS CH <b>86212</b> <b>W22A</b>	APP CRS <b>219°</b>	Rwy Idg TDZE <b>322</b> Apt Elev <b>322</b>	<b>8001</b>
--	------------------------	---	-------------

# RNAV (GPS) RWY 22

MILLINGTON/MEMPHIS (NQA)

RNP APCH - GPS.

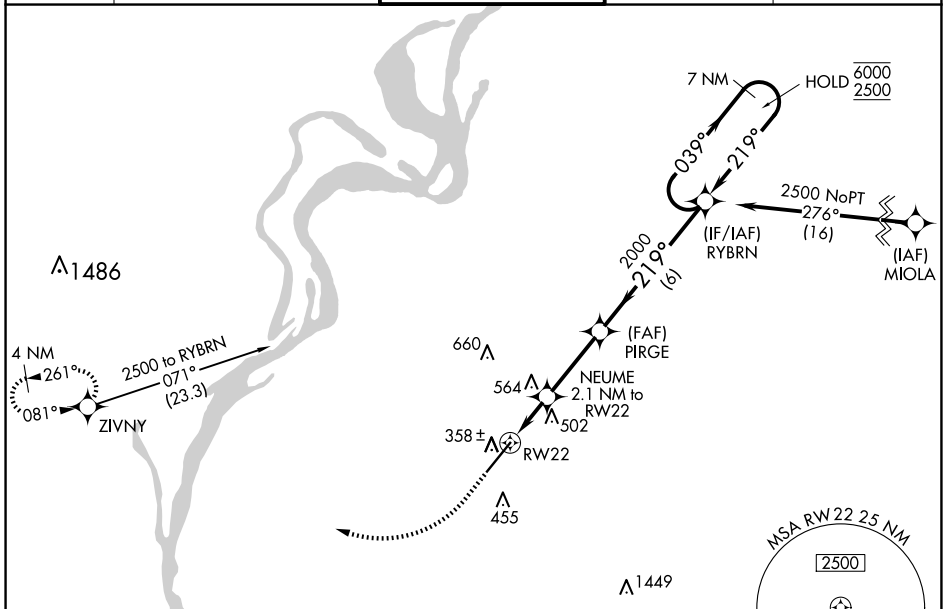
- ▼ For uncompensated Baro-VNAV systems, LNAV/VNAV NA below -15°C or above 54°C.
- ▲ For inop ALS, increase LPV Cat E visibility to ¾ SM, LNAV/VNAV all Cats visibility to 1¾ SM, and LNAV Cat E visibility to 1¾ SM.

MALSR



**MISSED APPROACH:**  
Climb to 840 then  
climbing right turn to  
2500 direct ZIVNY  
and hold.

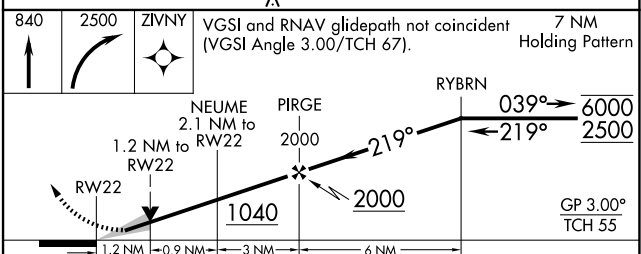
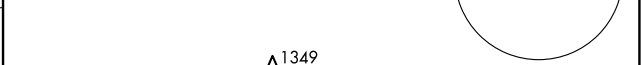
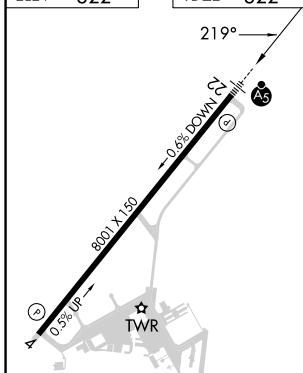
AWOS-3 <b>118.925</b>	MEMPHIS APP CON <b>119.1 291.6</b> <b>125.8 338.3</b> (176°-355°) (356°-175°)	MILLINGTON TOWER ★ <b>120.25 (CTAF) 0 340.2</b>	GND CON <b>121.375</b>	UNICOM <b>122.95</b>
--------------------------	---	--	---------------------------	-------------------------



SE-1, 17 APR 2025 to 15 MAY 2025

SE-1, 17 APR 2025 to 15 MAY 2025

ELEV 322	TDZE 322
----------	----------



CATEGORY	A	B	C	D	E
LPV DA		522-½	200 (200-½)		
LNAV/VNAV DA		784-1	462 (500-1)		
LNAV MDA	780-½	458 (500-½)	780-¾	458 (500-¾)	
<input checked="" type="checkbox"/> CIRCLING	800-1 478 (500-1)	820-1 498 (500-1)	920-1½ 598 (600-1½)	960-2 638 (700-2)	960-2¼ 638 (700-2¼)