

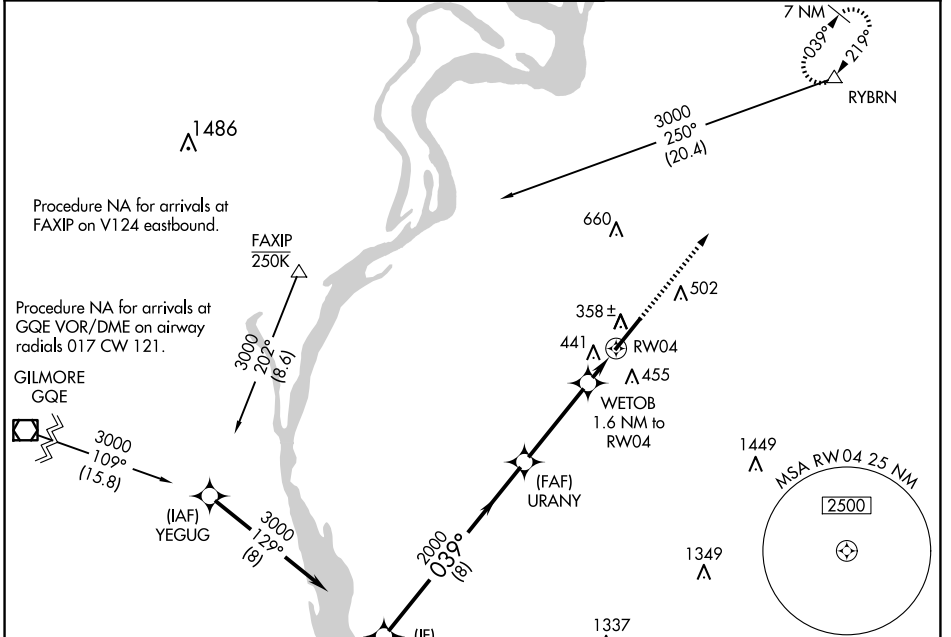
WAAS CH 78334 W04A	APP CRS 039°	Rwy Idg TDZE 292 Apt Elev 319	8001
--	------------------------	---	-------------

RNAV (GPS) RWY 4

MILLINGTON/MEMPHIS (NQA)

RNP APCH	<p>▼ Rwy 4 helicopter visibility reduction below 3/4 SM NA. For uncompensated Baro-VNAV systems, LNAV/VNAV NA below -15°C or above 54°C.</p>	<p>▲ MISSED APPROACH: Climb to 3000 direct RYBRN and hold.</p>
----------	--	--

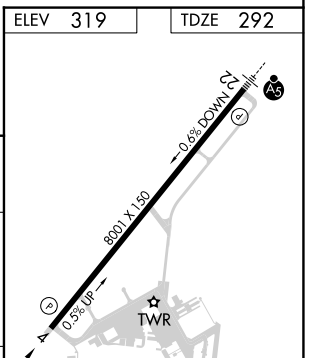
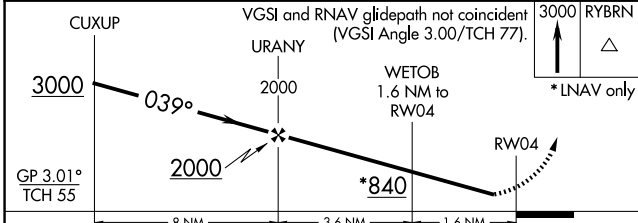
AWOS-3 118.925	MEMPHIS APP CON 119.1 291.6 125.8 338.3 (176°-355°) (356°-175°)	MILLINGTON TOWER ★ 120.25 (CTAF) 0 340.2	GND CON 121.375	UNICOM 122.95
--------------------------	--	---	---------------------------	-------------------------



SE-1, 17 APR 2025 to 15 MAY 2025

SE-1, 17 APR 2025 to 15 MAY 2025

ELEV 319	TDZE 292
----------	----------



CATEGORY	A	B	C	D	E
LPV DA	492-3/4		200 (200-3/4)		
LNAV/VNAV DA	746-1 1/2		454 (500-1 1/2)		
LNAV MDA	700-1	408 (400-1)	700-1 1/4	408 (400-1 1/4)	
CIRCLING	800-1	820-1	920-1 3/4	960-2 1/4	960-2 1/2
	481 (500-1)	501 (600-1)	601 (700-1 3/4)	641 (700-2 1/4)	641 (700-2 1/2)

REIL Rwy 22
REIL Rwy 4 **0**
HIRL Rwy 4-22 **0**