

LOC I-MMU <b>110.3</b>	APP CRS <b>229°</b>	Rwy ldg <b>5998</b>
		TDZE <b>184</b>
		Apt Elev <b>187</b>

# ILS or LOC RWY 23

MORRISTOWN MUNI (MMU)

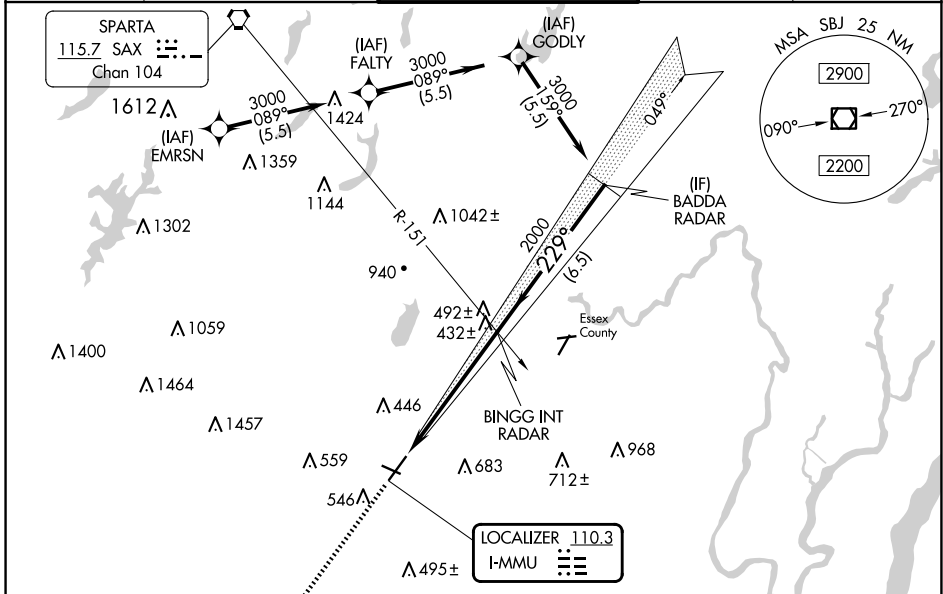
RNAV 1-GPS or RADAR required for procedure entry.  
From EMRSN: RNAV 1-GPS required.

**▽** Circling to Rwy 13, 31 NA at night. Autopilot coupled approach NA below 732. For inop ALS, increase S-LOC 23 Cats C/D visibility to 1 3/8 SM.

**MALSR**

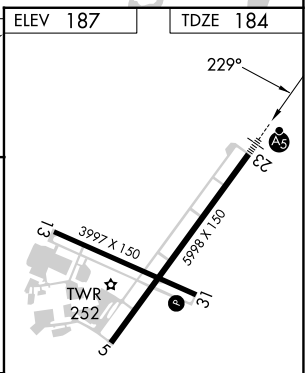
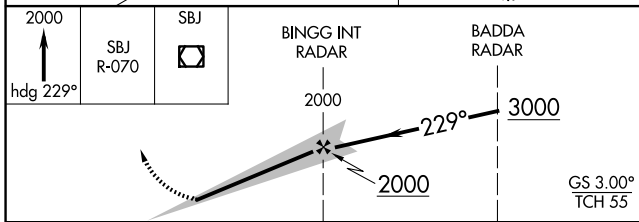
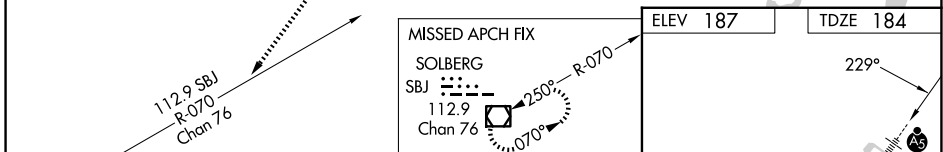
**MISSED APPROACH:** Climb to 2000 on heading 229° and on SBJ VOR/DME R-070 to SBJ VOR/DME and hold.

ATIS <b>124.25</b>	NEWARK APP CON <b>127.6 379.9</b>	MORRISTOWN TOWER ★ <b>118.10 (CTAF) 353.9</b>	GND CON <b>134.2</b>	CLNC DEL <b>128.6</b>
-----------------------	--------------------------------------	--	-------------------------	--------------------------



NE-2, 17 APR 2025 to 15 MAY 2025

NE-2, 17 APR 2025 to 15 MAY 2025



CATEGORY	A	B	C	D
S-ILS 23		384-1/2	200 (200-1/2)	
S-LOC 23	700-1/2	516 (600-1/2)	700-1	516 (600-1)
<b>C</b> CIRCLING	860-1 673 (700-1)	900-1 713 (800-1)	1000-2 1/2 813 (900-2 1/2)	1200-3 1013 (1100-3)

REIL Rwy 5 and 31					
HIRL Rwy 5-23					
MIRL Rwy 13-31					
FAF to MAP 5.5 NM					
Knots	60	90	120	150	180
Min:Sec	5:30	3:40	2:45	2:12	1:50