

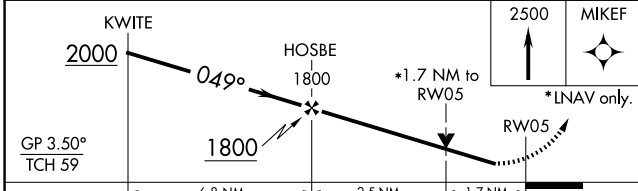
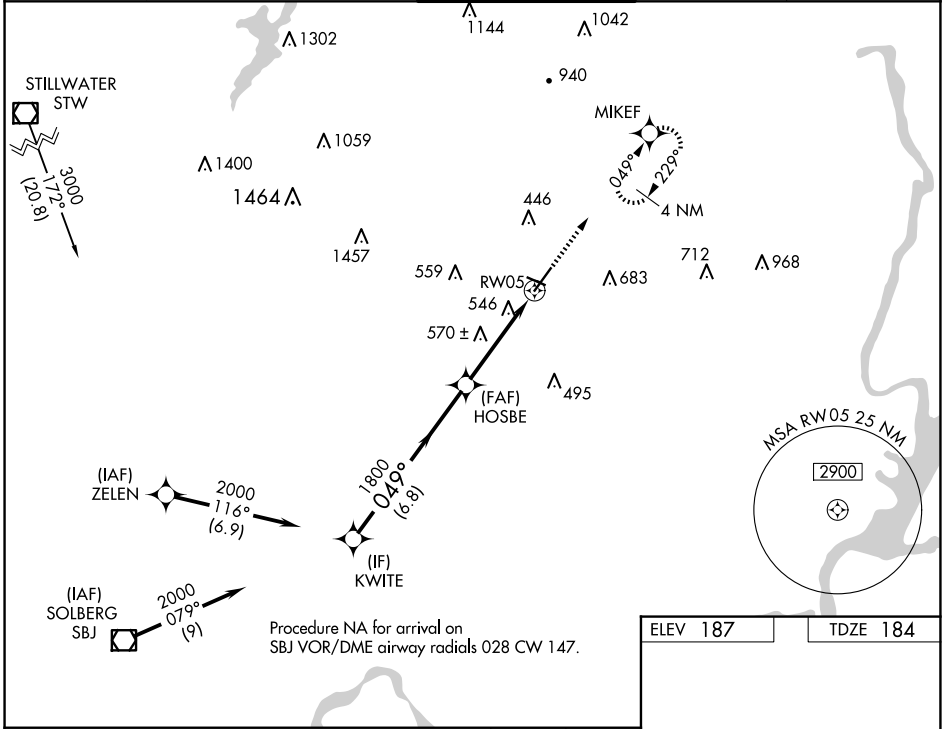
WAAS CH 97720 W05A	APP CRS 049°	Rwy Idg 5998 TDZE 184 Apt Elev 187
--	------------------------	---

RNAV (GPS) RWY 5

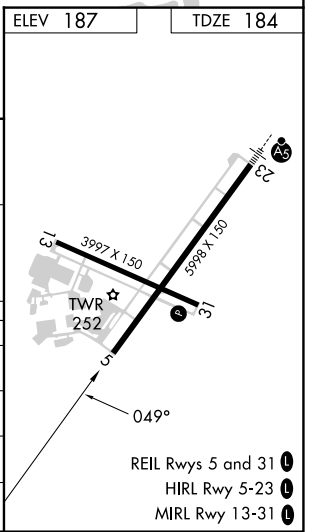
MORRISTOWN MUNI (MMU)

RNP APCH.	MISSED APPROACH: Climb to 2500 direct MIKEF and hold, continue climb-in-hold to 2500.
<p>▼ Rwy 5 helicopter visibility reduction below 3/4 SM NA.</p> <p>▲ For uncompensated Baro-VNAV systems, procedure NA below -15°C or above 46°C. Circling Rwy 13, 31 NA at night.</p>	

ATIS 124.25	NEWARK APP CON 127.6 379.9	MORRISTOWN TOWER* 118.1 (CTAF) 353.9	GND CON 134.2	CLNC DEL 128.6
-----------------------	--------------------------------------	---	-------------------------	--------------------------



CATEGORY	A	B	C	D
LPV DA		879-2	695 (700-2)	
LNAV/VNAV DA		893-2	709 (800-2)	
LNAV MDA	880-1	696 (700-1)	880-2	696 (700-2)
C CIRCLING	880-1 693 (700-1)	900-1 713 (800-1)	1000-2½ 813 (900-2½)	1200-3 1013 (1100-3)



NE-2, 17 APR 2025 to 15 MAY 2025

NE-2, 17 APR 2025 to 15 MAY 2025