

LOC/DME I-REE	APP CRS	Rwy ldg	<b>7302</b>
<b>111.35</b>	<b>316°</b>	TDZE	<b>806</b>
Chan <b>50</b> (Y)		Apt Elev	<b>808</b>

# ILS or LOC RWY 32

SOUTHERN WISCONSIN RGNL (JVL)

DME required. RNP APCH - GPS.

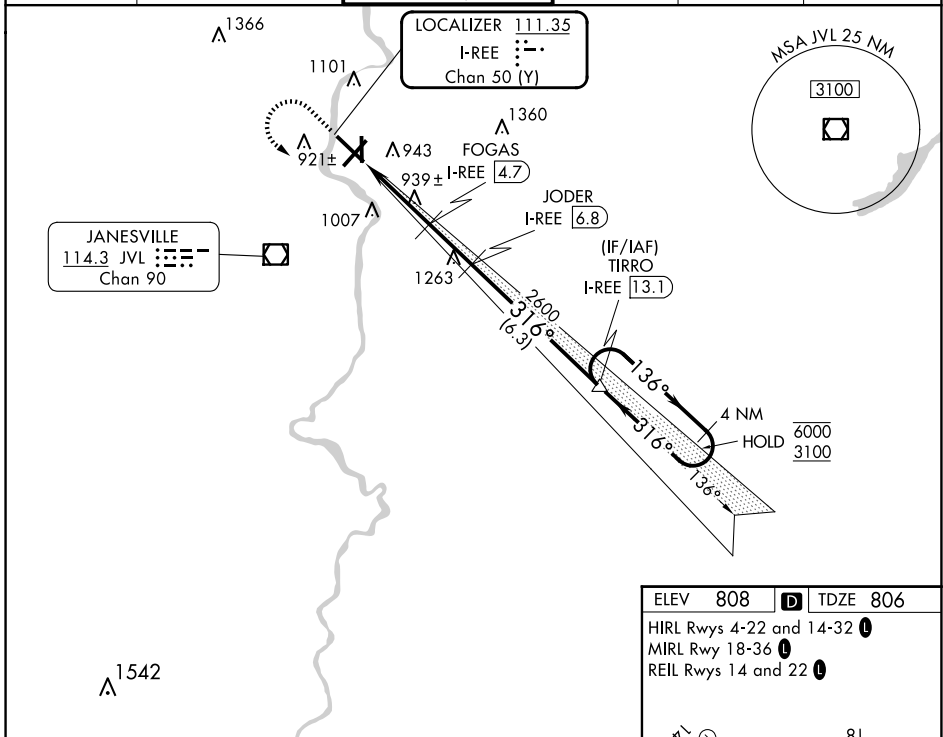
**⚠** Circling Rwy 18 NA at night. When local altimeter setting not received, use Chicago/Rockford Intl altimeter setting and increase DA to 1075, increase all MDA 80 feet. Increase S-LOC 32 Cats C and D visibility  $\frac{3}{8}$  SM, and Circling Cats C/D  $\frac{1}{4}$  SM. VDP NA when using Chicago/Rockford Intl altimeter setting. For inop ALS when using Chicago/Rockford Intl altimeter setting, increase S-ILS 32 visibility all Cats to  $\frac{3}{8}$  SM and S-LOC 32 visibility Cats C/D to  $1\frac{3}{8}$  SM.

MALSR



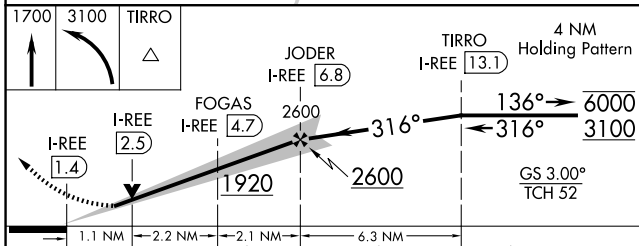
MISSED APPROACH: Climb to 1700 then climbing left turn to 3100 direct TIRRO and hold.

ATIS	ROCKFORD APP CON	JANESVILLE TOWER*	GND CON	CLNC DEL	UNICOM
<b>128.25</b>	<b>121.0 327.0</b>	<b>118.8(CTAF) 0 225.4</b>	<b>121.65</b>	<b>121.65</b>	<b>122.95</b>



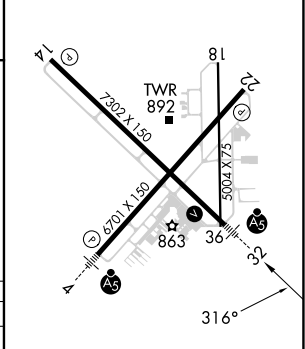
EC-3, 17 APR 2025 to 15 MAY 2025

EC-3, 17 APR 2025 to 15 MAY 2025



CATEGORY	A	B	C	D
S-ILS 32	1006- $\frac{1}{2}$ 200 (200- $\frac{1}{2}$ )			
S-LOC 32	1200- $\frac{1}{2}$	394 (400- $\frac{1}{2}$ )	1200- $\frac{3}{8}$	394 (400- $\frac{3}{8}$ )
<b>C</b> CIRCLING	1260-1 452 (500-1)	1320-1 512 (600-1)	1420-1 $\frac{3}{4}$ 612 (700-1 $\frac{3}{4}$ )	1460-2 652 (700-2)

ELEV	<b>808</b>	TDZE	<b>806</b>
HIRL Rwy	4-22 and 14-32		
MIRL Rwy	18-36		
REIL Rwy	14 and 22		



FAF to MAP 5.4 NM					
Knots	60	90	120	150	180
Min:Seq	5:24	3:36	2:42	2:10	1:48