

LOC I-JVL 109.1	APP CRS 044°	Rwy ldg 6701
		TDZE 806
		Apt Elev 808

ILS or LOC RWY 4

SOUTHERN WISCONSIN RGNL (JVL)

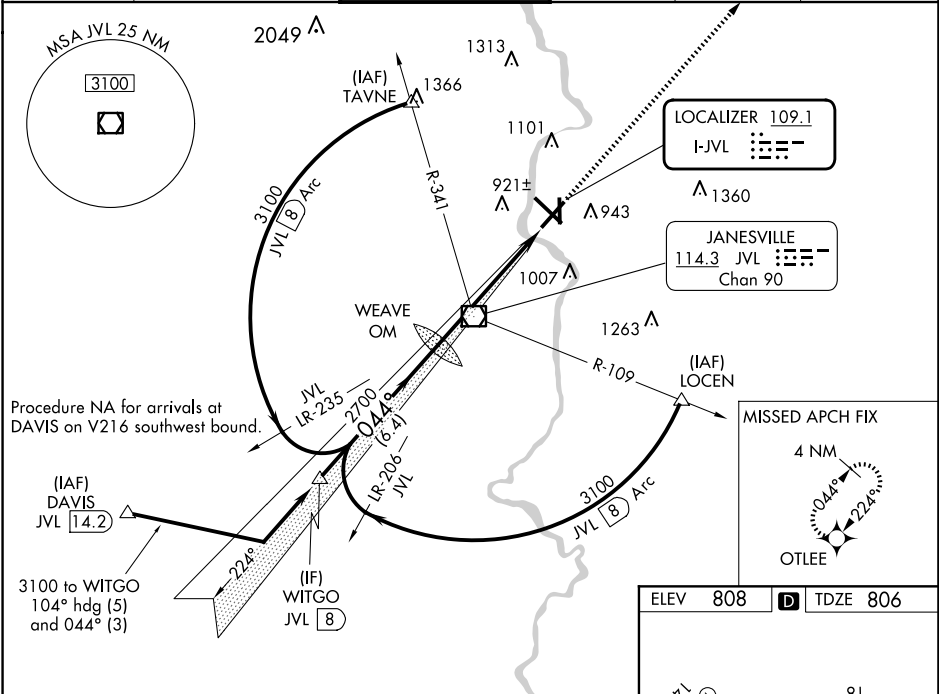
DME required. RNP APCH - GPS.

▼ When local altimeter setting not received, use Rockford altimeter setting and increase DA 69 feet and all MDAs 80 feet; increase S-LOC 4 Cats C/D and Circling Cats C/D ¼ SM. For inop ALS when using Rockford altimeter setting; increase S-ILS 4 all Cats visibility to ¾ SM and S-LOC 4 Cats C/D visibility to 1½ SM. Circling Rwy 18 NA at night. DME from JVL VOR/DME. DME use requires simultaneous reception of I-JVL and JVL VOR/DME.



MISSED APPROACH:
Climb to 3100 direct
OTLEE and hold.

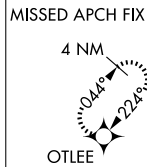
ATIS 128.25	ROCKFORD APP CON 121.0 327.0	JANESVILLE TOWER ★ 118.8(CTAF) 225.4	GND CON 121.65	CLNC DEL 121.65	UNICOM 122.95
-----------------------	--	--	--------------------------	---------------------------	-------------------------



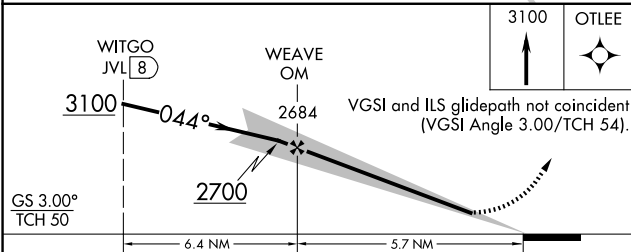
Procedure NA for arrivals at DAVIS on V216 southwest bound.

(IAF) DAVIS
JVL 14.2

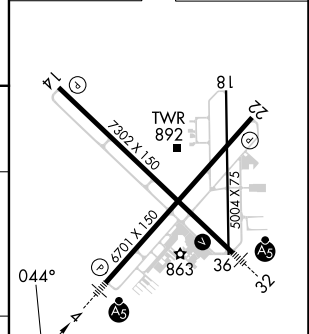
3100 to WITGO
104° hdg (5)
and 044° (3)



ELEV 808	D	TDZE 806
----------	---	----------



VGS I and ILS glidepath not coincident
(VGS I Angle 3.00/TCH 54).



CATEGORY	A	B	C	D
S-ILS 4	1006-½		200 (200-½)	
S-LOC 4	1400-½	594 (600-½)	1400-1 594 (600-1)	1400-1¼ 594 (600-1¼)
CIRCLING	1400-1	592 (600-1)	1420-1¾ 612 (700-1¾)	1460-2 652 (700-2)

FAF to MAP 5.7 NM					
Knots	60	90	120	150	180
Min:Sec	5:42	3:48	2:51	2:17	1:54

EC-3, 17 APR 2025 to 15 MAY 2025

EC-3, 17 APR 2025 to 15 MAY 2025