

WAAS CH <b>40417</b> <b>W22A</b>	APP CRS <b>224°</b>	Rwy Idg TDZE Apr Elev	<b>6701</b> <b>805</b> <b>808</b>
--	------------------------	-----------------------------	---

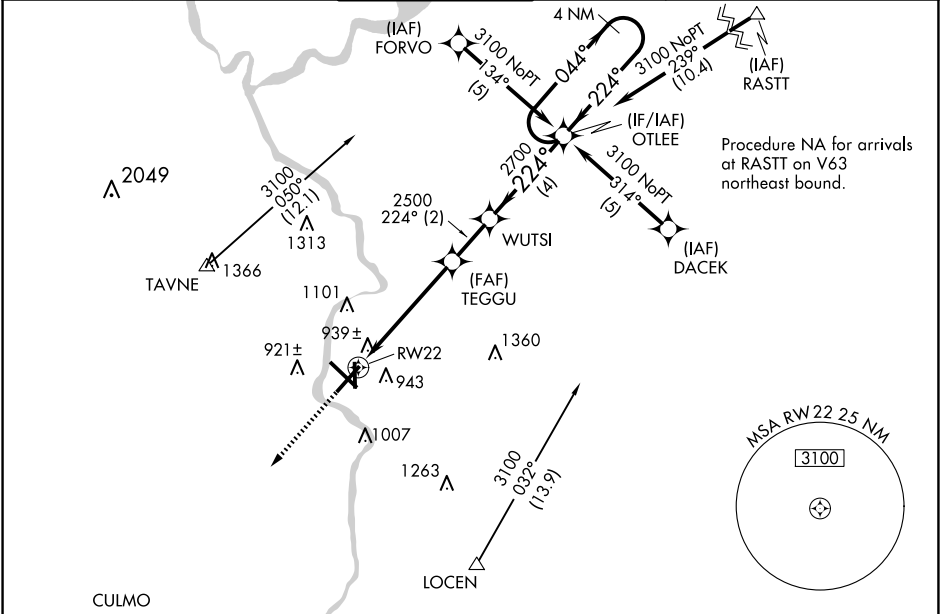
# RNAV (GPS) RWY 22

SOUTHERN WISCONSIN RGNL (JVL)

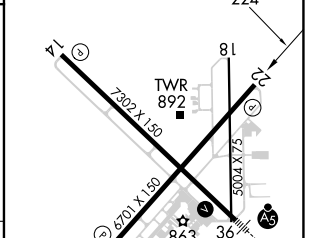
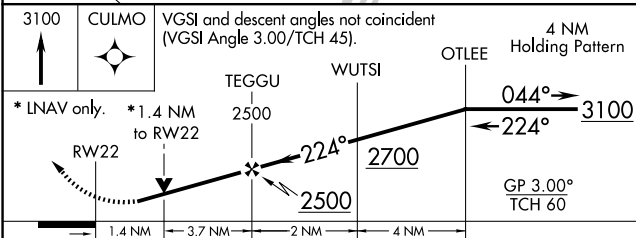
**⚠** Circling to Rwy 18 NA at night. Baro-VNAV NA when using Rockford altimeter setting. For uncompensated Baro-VNAV systems, LNAV/VNAV NA below -16°C (4°F) or above 47°C (116°F).  
**⚠** DME/DME RNP-0.3 NA. Visibility reduction by helicopters NA. When local altimeter setting not received, use Rockford altimeter setting and increase LPV DA to 1189 feet, LNAV/VNAV DA to 1313 feet, and all MDAs 80 feet; increase LPV all Cats visibility ¼ SM, LNAV/VNAV all Cats visibility ½ SM, LNAV Cats C/D visibility ¾ SM and Circling Cats C/D visibility ¼ SM.  
 VDP NA with Rockford altimeter setting.

**MISSED APPROACH:**  
Climb to 3100 direct CULMO and hold.

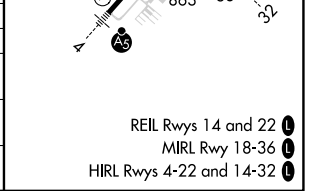
ATIS <b>128.25</b>	ROCKFORD APP CON <b>121.0 327.0</b>	JANESVILLE TOWER ★ <b>118.8(CTAF) 0 225.4</b>	GND CON <b>121.65</b>	CLNC DEL <b>121.65</b>	UNICOM <b>122.95</b>
-----------------------	--	--	--------------------------	---------------------------	-------------------------



ELEV 808	<b>D</b> TDZE 805
----------	-------------------



CATEGORY	A	B	C	D
LPV DA	1120-1 315 (400-1)			
LNAV/VNAV DA	1244-1½ 439 (500-1½)			
LNAV MDA	1320-1 515 (600-1)	1320-1½ 515 (600-1½)	1320-1¾ 515 (600-1¾)	
CIRCLING	1320-1 512 (600-1)	1420-1¾ 612 (700-1¾)	1460-2 652 (700-2)	



EC-3, 17 APR 2025 to 15 MAY 2025

EC-3, 17 APR 2025 to 15 MAY 2025