

| | | |
|-------------|----------|-------------|
| APP CRS | Rwy Idg | 7302 |
| 316° | TDZE | 806 |
| | Apt Elev | 808 |

RNAV (GPS) RWY 32

SOUTHERN WISCONSIN RGNL (JVL)

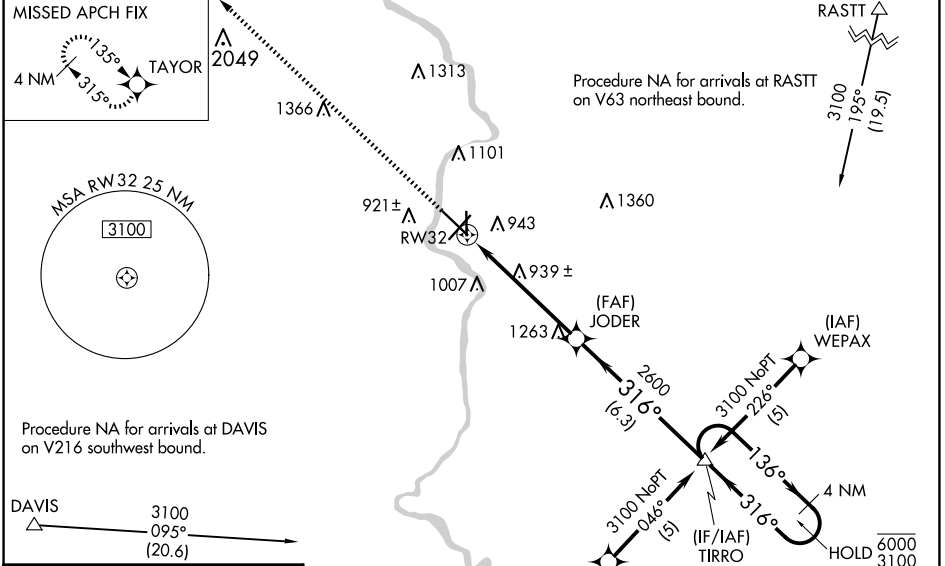
RNP APCH-GPS.

NA Circling Rwy 18 NA at night. Baro-VNAV and VDP NA when using Rockford altimeter setting. For uncompensated Baro-VNAV systems, procedure NA below -16° C or above 54°C. When local altimeter setting not received, use Rockford altimeter setting and increase LNAV/VNAV DA to 1289 feet and all MDAs 80 feet; increase LNAV/VNAV all Cats visibility ¼ SM, LNAV Cat C/D visibility ⅓ SM, and Circling Cat C/D visibility ¼ SM. For inop ALS when using Rockford altimeter setting, increase LNAV/VNAV all Cats visibility and LNAV Cat C/D visibility to 1⅓ SM.

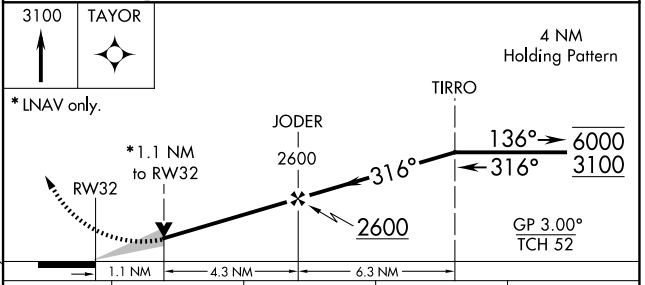
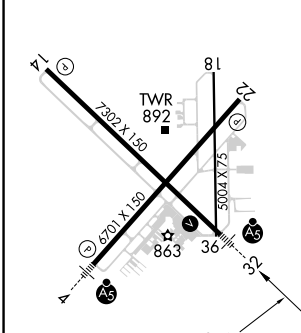
MALS R

MISSED APPROACH: Climb to 3100 direct TAYOR and hold.

| | | | | | |
|---------------|--------------------|-----------------------------|---------------|---------------|---------------|
| ATIS | ROCKFORD APP CON | JANESVILLE TOWER ★ | GND CON | CLNC DEL | UNICOM |
| 128.25 | 121.0 327.0 | 118.8 (CTAF) 0 225.4 | 121.65 | 121.65 | 122.95 |



| | | |
|----------|----------|----------|
| ELEV 808 | D | TDZE 806 |
|----------|----------|----------|



| | | | | |
|--------------|--------------------|--------------------|----------------------|--------------------|
| CATEGORY | A | B | C | D |
| LNAV/VNAV DA | 1220-¾ 414 (500-¾) | | | |
| LNAV MDA | 1200-½ 394 (400-½) | 1200-⅝ 394 (400-⅝) | | |
| CIRCLING | 1260-1 452 (500-1) | 1320-1 512 (600-1) | 1420-1¾ 612 (700-1¾) | 1460-2 652 (700-2) |

REIL Rwy 14 and 22

MIRL Rwy 18-36

HIRL Rwy 4-22 and 14-32

EC-3, 17 APR 2025 to 15 MAY 2025

EC-3, 17 APR 2025 to 15 MAY 2025