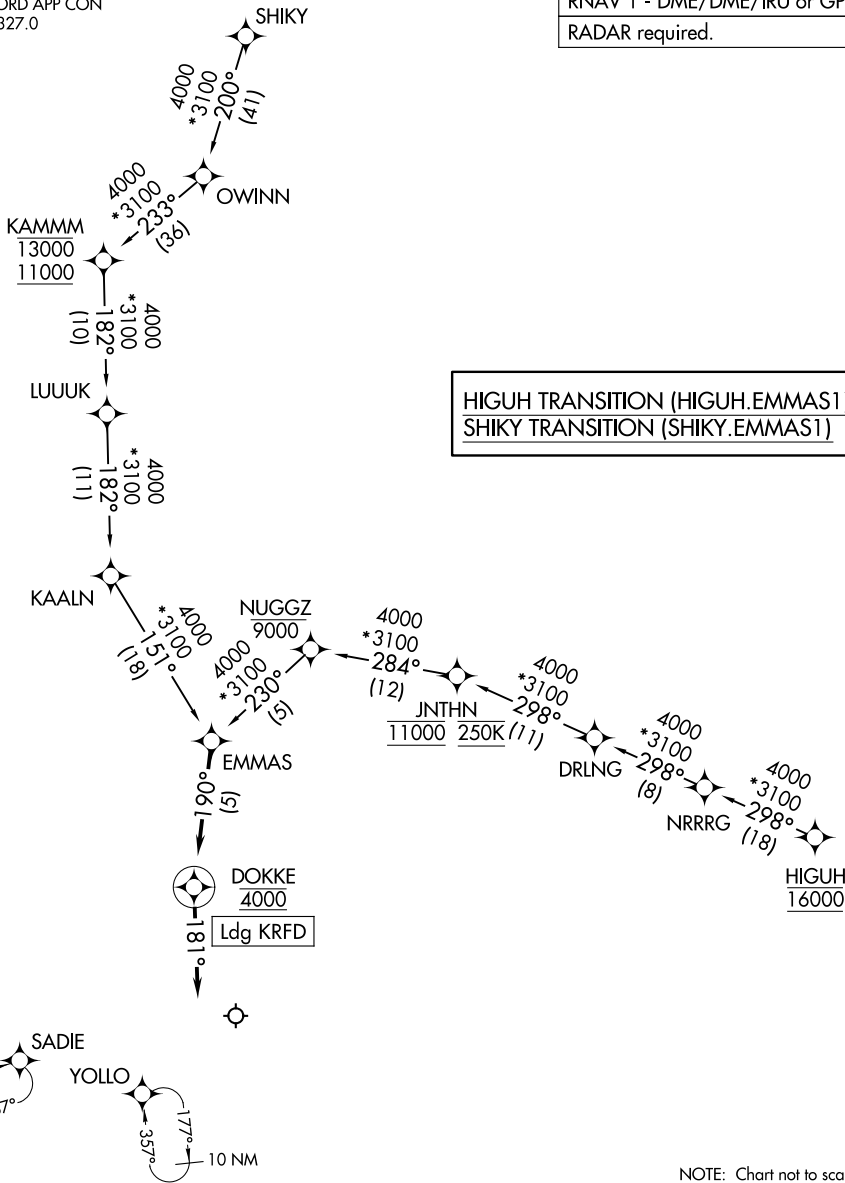


# EMMAS ONE ARRIVAL (RNAV)

ROCKFORD APP CON  
121.0 327.0  
ATIS  
127.6

RNAV 1 - DME/DME/IRU or GPS.

RADAR required.



EC-3, 17 APR 2025 to 15 MAY 2025

EC-3, 17 APR 2025 to 15 MAY 2025

## ARRIVAL ROUTE DESCRIPTION

From EMMAS on track 190° to cross DOKKE at 4000, then on track 181°. Expect RADAR vectors to final approach course.