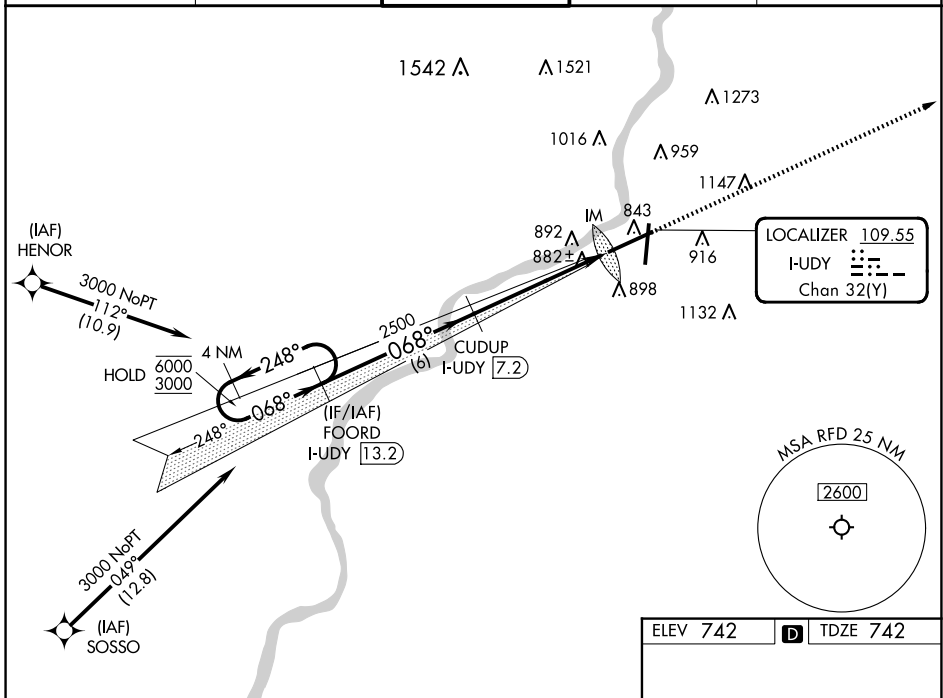


LOC/DME I-UDY 109.55 Chan 32 (Y)	APP CRS 068°	Rwy Idg 10002 TDZE 742 Apt Elev 742
--	------------------------	--

ILS RWY 7 (CAT II & III)
CHICAGO/ROCKFORD INTL (RFD)

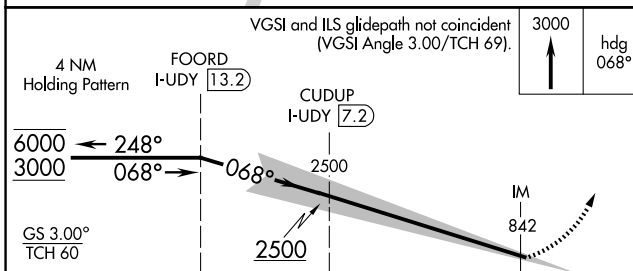
RNP APCH - GPS. From HENOR or SOSSO. RADAR required.	ALSF-2	MISSED APPROACH: Climb to 3000 on heading 068°. Expect RADAR vectors. (RADAR required).
ASR CAT II: RVR 1000 authorized with specific OPSPEC, MSPEC, or LOA approval and use of autoland or HUD to touchdown.		

ATIS 127.6	ROCKFORD APP CON 121.0 327.0	ROCKFORD TOWER 118.1 290.375	GND CON 121.9 290.375	CLNC DEL 119.25
----------------------	--	--	---------------------------------	---------------------------

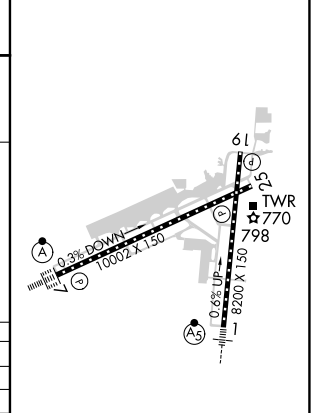


EC-3, 17 APR 2025 to 15 MAY 2025

EC-3, 17 APR 2025 to 15 MAY 2025



ELEV 742	TDZE 742
----------	----------



CATEGORY	A	B	C	D
S-ILS 7	CAT II RA 114/12 100 DA 842			
S-ILS 7	CAT III RVR 06			

CATEGORY II & III ILS - SPECIAL AIRCREW & AIRCRAFT CERTIFICATION REQUIRED

REIL Rwy 19 and 25
HIRL Rwy 1-19 and 7-25
TDZ/CL Rwy 1 and 7