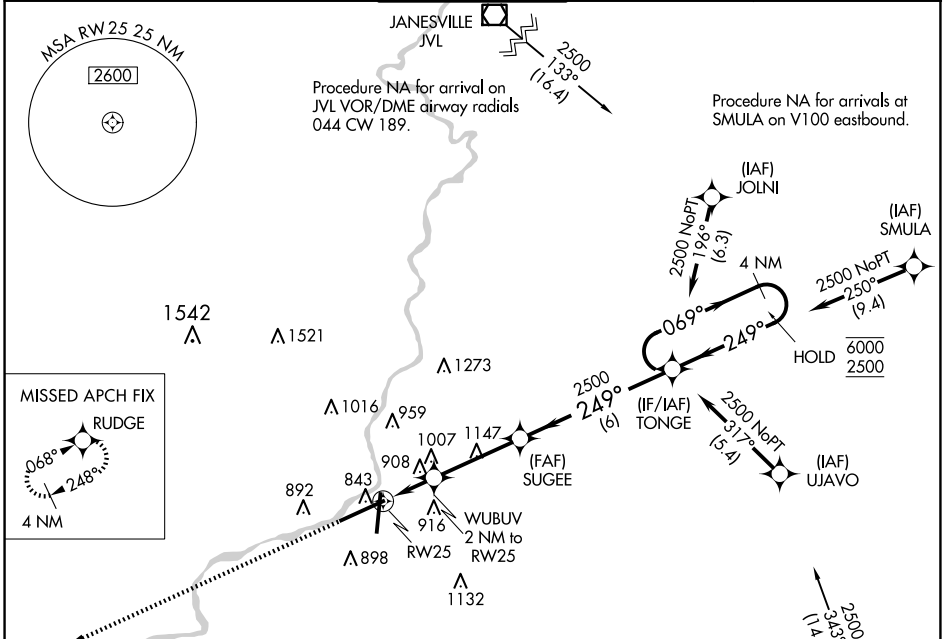


WAAS CH 40128 W25A	APP CRS 249°	Rwy Idg 10002 TDZE 736 Apt Elev 742
--	------------------------	--

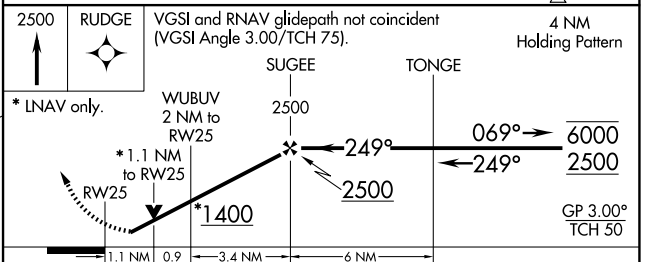
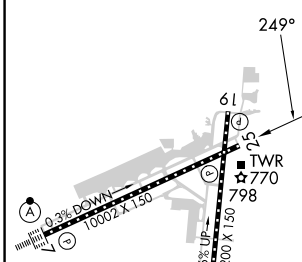
RNAV (GPS) RWY 25

CHICAGO/ROCKFORD INTL (RFD)

RNP APCH. Rwy 25 helicopter visibility reduction below 3/4 SM NA. For uncompensated Baro-VNAV systems, LNAV/VNAV NA below -25°C or above 39°C.		MISSED APPROACH: Climb to 2500 direct RUDGE and hold.		
ATIS 127.6	ROCKFORD APP CON 121.0 327.0	ROCKFORD TOWER 118.1 290.375	GND CON 121.9 290.375	CLNC DEL 119.25



ELEV 742	D	TDZE 736
-----------------	----------	-----------------



CATEGORY	A	B	C	D
LPV DA		986/50	250 (300-1)	
LNAV/VNAV DA		1191-1 3/8	455 (500-1 3/8)	
LNAV MDA		1160/55	424 (500-1)	
C CIRCLING	1220-1 478 (500-1)	1280-1 538 (600-1)	1320-1 1/2 578 (600-1 1/2)	1460-2 1/4 718 (800-2 1/4)

REIL Rwy 19 and 25
HIRL Rwy 1-19 and 7-25
TDZ/CL Rwy 1 and 7

EC-3, 17 APR 2025 to 15 MAY 2025

EC-3, 17 APR 2025 to 15 MAY 2025