

# RNAV (GPS) RWY 23

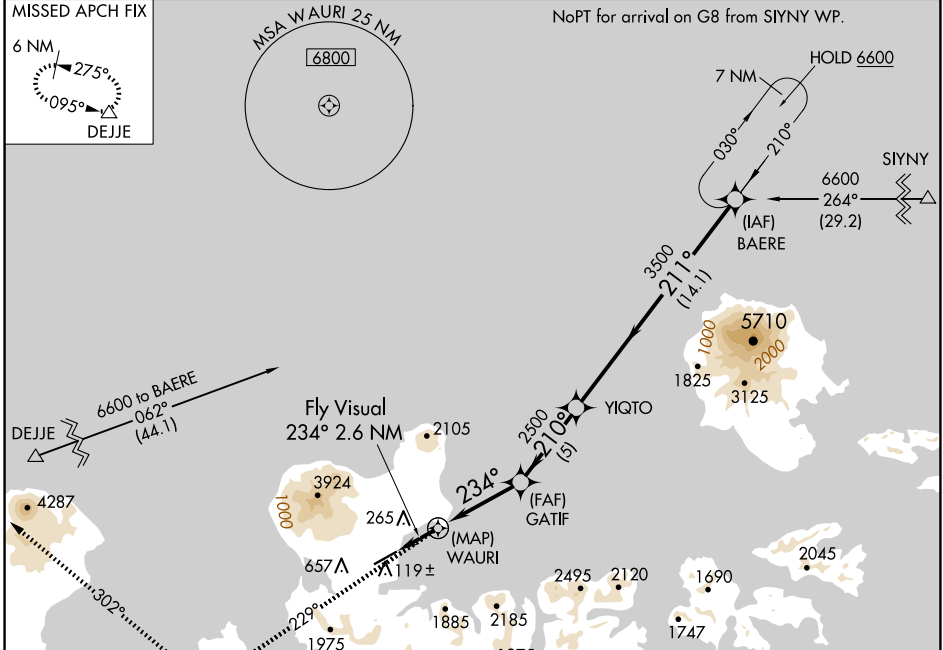
ADAK (ADK)(PADK)

APP CRS	Rwy Idg	<b>6190</b>
<b>234°</b>	TDZE	<b>17</b>
	Apt Elev	<b>20</b>

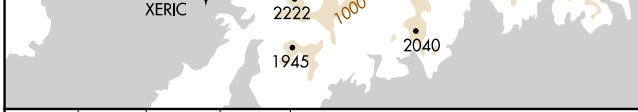
RNP APCH-GPS	MALS
Circling not authorized at night. Circling NA northwest of Rwy 5-23.	

MISSED APPROACH: Climb to 6600 on course 229° to XERIC, and right turn on course 302° to DEJJE and hold.

AWOS-3P <b>134.5</b>	ANCHORAGE CENTER <b>126.4 254.3</b>	CTAF <b>122.9</b>
-------------------------	--	----------------------

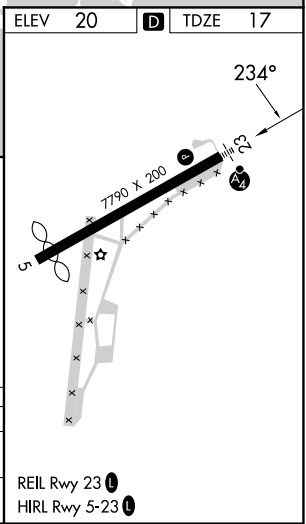


ELEV	20		TDZE	17
------	----	--	------	----



6600	XERIC	DEJJE	BAERE
crs 229°			
	crs 302°		
Fly Visual	GATIF	YIQTO	6600
234° 2.6 NM			
WAURI			Procedure Turn NA
	234°	210°	
	5 NM	5 NM	14.1 NM

CATEGORY	A	B	C	D
LNAV MDA	1220-3 1203 (1200-3)			
CIRCLING	1220-3	1200 (1200-3)	NA	



AK, 17 APR 2025 to 12 JUN 2025

AK, 17 APR 2025 to 12 JUN 2025