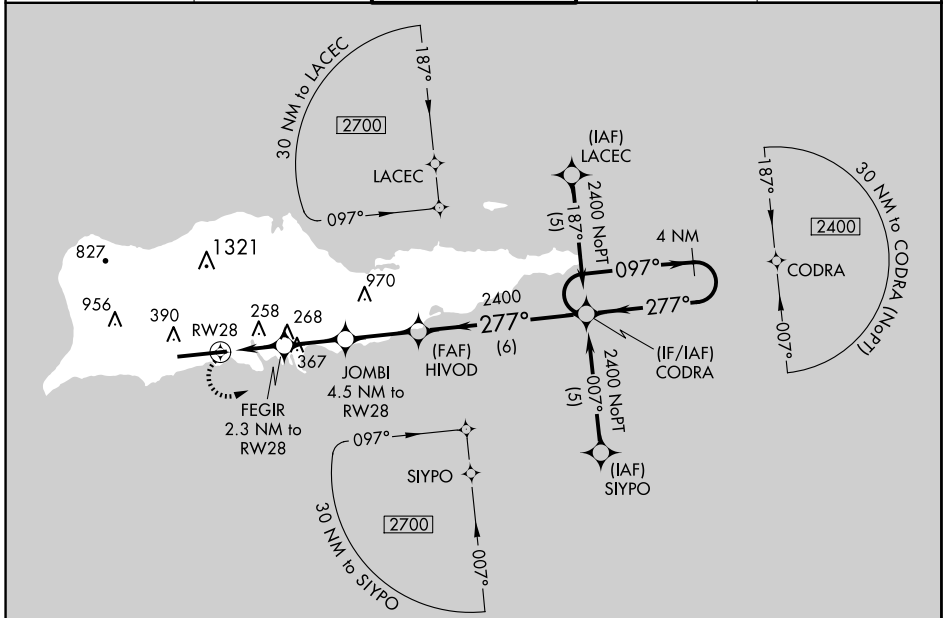


APP CRS 277°	Rwy Idg 9002
	TDZE 40
	Apt Elev 74

RNAV (GPS) RWY 28

HENRY E ROHLSEN (STX)(TISX)

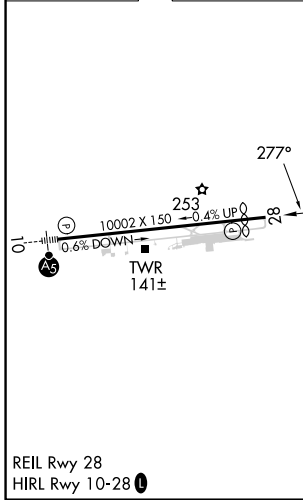
<p>⚠ Circling NA N of Rwy 10-28. DME/DME RNP-0.3 NA. Visibility reduction by helicopters NA. When local altimeter setting not received, procedure NA.</p>		<p>MISSED APPROACH: Climbing left turn to 2400 direct CODRA and hold.</p>	
<p>ATIS 135.65</p>	<p>SAN JUAN CENTER 128.65 279.6</p>	<p>ST. CROIX TOWER ★ 118.6(CTAF) 239.3</p>	<p>GND CON 121.7</p>
		<p>UNICOM 123.0</p>	



SE-3, 17 APR 2025 to 15 MAY 2025

SE-3, 17 APR 2025 to 15 MAY 2025

ELEV 74	TDZE 40
---------	---------



	2400	CODRA	4 NM Holding Pattern	
	JOMBI 4.5 NM to RW28	HIVOD	CODRA	
	FE GIR 2.3 NM to RW28	277°	2400	
	1.4 NM to RW28	1520	097°	
	RW28	800	277°	
	1.4	0.9	2.2	
			2.6	
			6 NM	
	<p>VGSI and descent angles not coincident (VGSI Angle 3.00/TCH 80).</p>			
CATEGORY	A	B	C	D
LNAV MDA	560-1	520 (500-1)	560-1½ 520 (500-1½)	560-1¾ 520 (500-1¾)
CIRCLING	560-1 486 (500-1)	600-1 526 (600-1)	720-1¾ 646 (700-1¾)	720-2 646 (700-2)