

MINOT, NORTH DAKOTA

24137

COPTER TACAN 125°

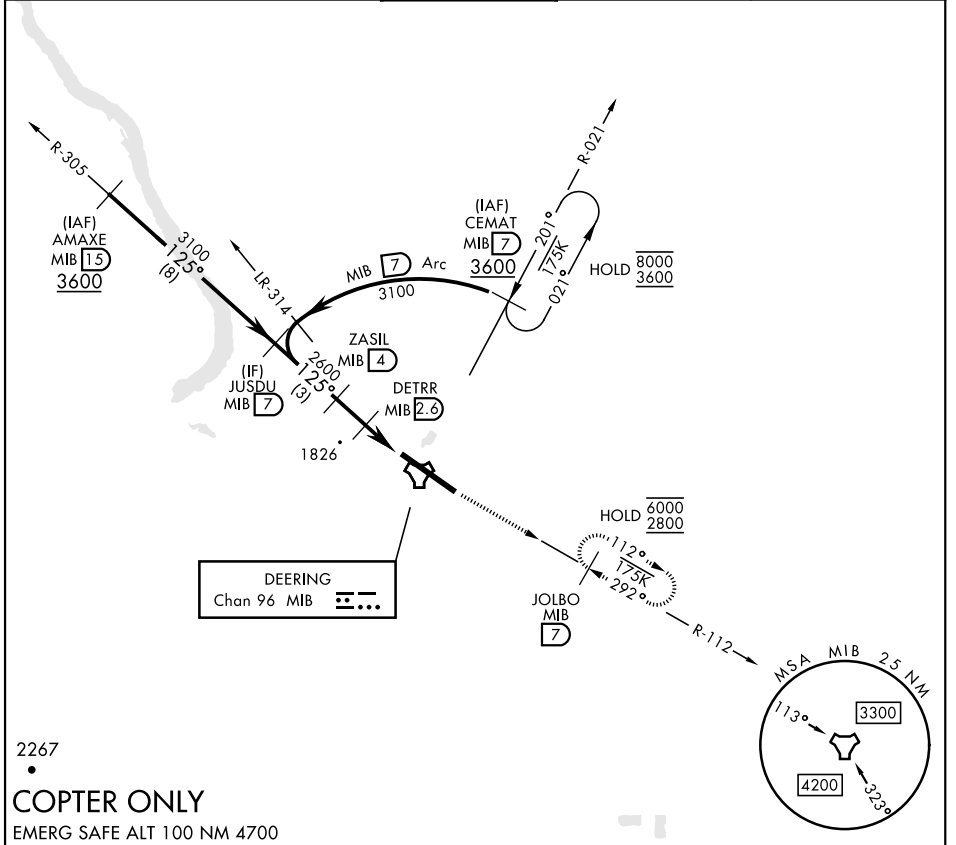
TACAN MIB Chan 96	APCH CRS 125°	Rwy ldg 13,198 TDZE 1666 Arpt Elev 1666
-----------------------------	-------------------------	--

[USAF]

MINOT AFB (KMIB)

* When ALS inop, increase RVR to 28 and vis to ½ mile.	ALSF-1 	MISSED APPROACH: Climb to 3600 via MIB TACAN R-112 direct JOLBO and hold.
--	------------	---

ATIS ★ 278.8	MINOT APP CON 119.6 363.8	MINOT TOWER ★ 120.65 253.5	GND CON 134.0 275.8	CLNC DEL 326.2
------------------------	-------------------------------------	--------------------------------------	-------------------------------	--------------------------



DEERING
Chan 96 MIB

2267

COPTER ONLY

EMERG SAFE ALT 100 NM 4700

JUSDU MIB 7 3100	ZASIL MIB 4 2600	DETRR MIB 2.6 2200	JOLBO MIB 7 3600	ELEV 1666	TDZE 1666
CATEGORY	COPTER				
H-125°*	2080/12	414	(500-¼)	HIRL Rwy 12-30	

MINOT, NORTH DAKOTA

48° 25' N-101° 21' W

MINOT AFB (KMIB)

Amdt 1 16MAY24

COPTER TACAN 125°

NC-1, 17 APR 2025 to 15 MAY 2025

NC-1, 17 APR 2025 to 15 MAY 2025