

HI-ILS or LOC Z RWY 30

LOC I-MIB 109.9	APCH CRS 298°	Rwy Ildg 13,198 TDZE 1646 Arpt Elev 1666
---------------------------	-------------------------	---

[USAF]

MINOT AFB (KMIB)

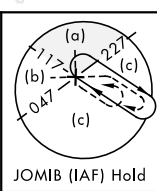
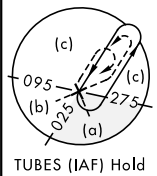
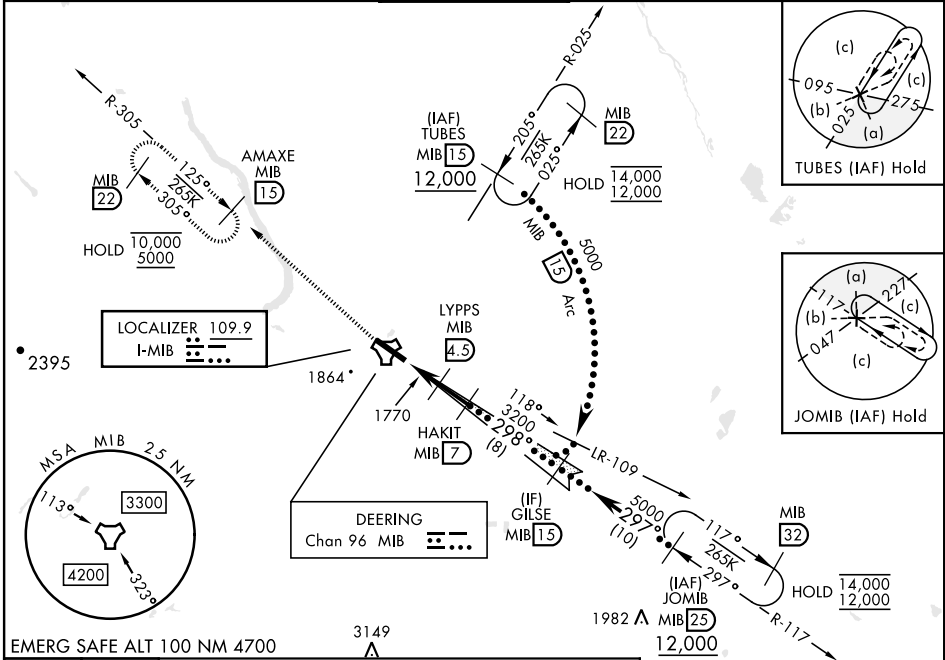
RADAR or DME required.

- * When ALS inop, increase RVR to 40, vis to 3/4 mile.
- ** When ALS inop, increase RVR to 55, vis to 1 mile.
- *** Circling Not Authorized N of Rwy 12-30.
- **** When ALS inop, increase vis to 1 3/8 miles.

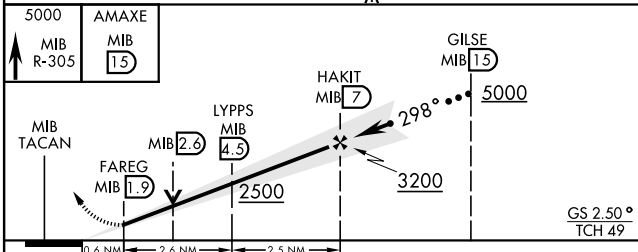


MISSED APPROACH: Climb to 5000 via MIB TACAN R-305 direct AMAXE and hold.

ATIS ★ 278.8	MINOT APP CON 119.6 363.8	MINOT TOWER ★ 120.65 253.5	GND CON 134.0 275.8	CLNC DEL 326.2
------------------------	-------------------------------------	--------------------------------------	-------------------------------	--------------------------

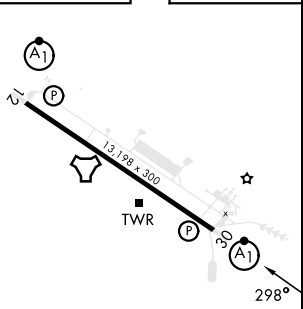


EMERG SAFE ALT 100 NM 4700



ELEV	1666	TDZE	1646
------	------	------	------

CATEGORY	C	D	E
S-ILS 30*	1846/24	200	(200-1/2)
S-LOC 30**	2020/35	374	(400-3/4)
*** CIRCLING	2180-1 1/2 514 (600-1 1/2)	2320-2 654 (700-2)	2320-2 1/4 654 (700-2 1/4)
LOCAL ALTIMETER WITHOUT LAST STEPDOWN FIX			
S-LOC 30****	2140/50	494	(500-1)
*** CIRCLING	2180-1 1/2 514 (600-1 1/2)	2320-2 654 (700-2)	2320-2 1/4 654 (700-2 1/4)



HIRL Rwy 12-30					
FAF to MAP 5.2 NM					
Knots	120	140	160	180	200
Min:Sec	2:36	2:14	1:57	1:44	1:34

HI-ILS or LOC Z RWY 30

NC-1, 17 APR 2025 to 15 MAY 2025

NC-1, 17 APR 2025 to 15 MAY 2025