

# HI-TACAN Z RWY 12

TACAN Chan <b>96</b>	APCH CRS <b>125°</b>	Rwy Idg <b>13,198</b> TDZE <b>1666</b> Arprt Elev <b>1666</b>
-------------------------	-------------------------	---

[USAF]

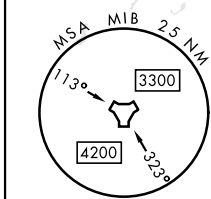
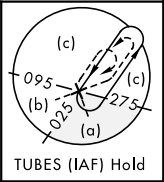
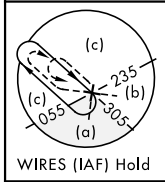
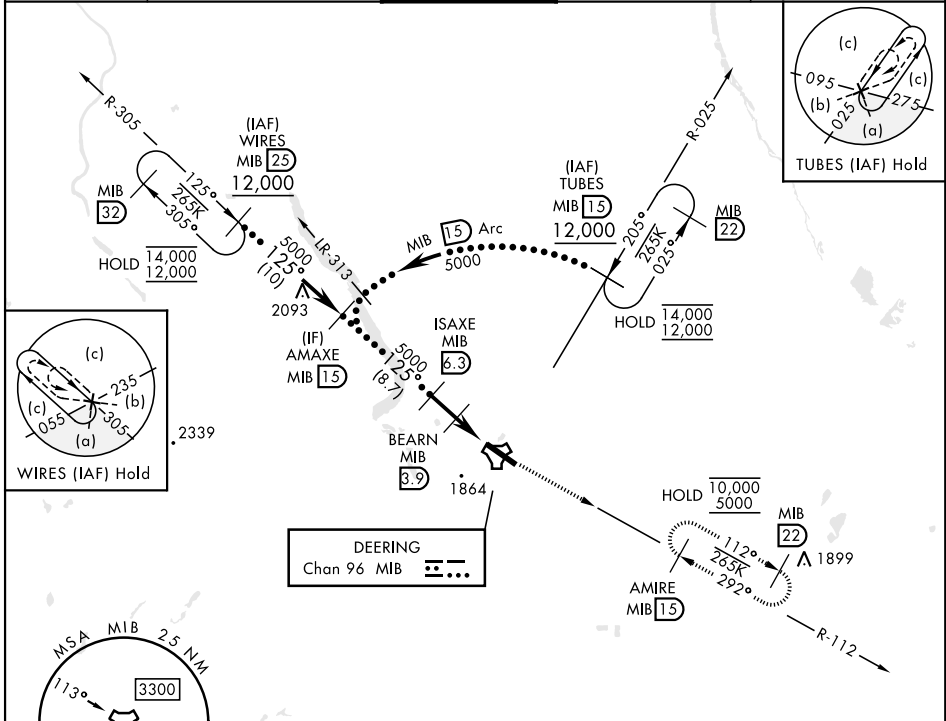
MINOT AFB (KMIB)

\* When ALS inop, increase CAT CDE vis to 1 3/8 miles.  
 \*\* Circling not authorized N of Rwy 12-30.

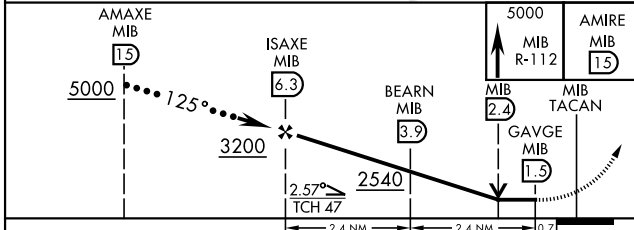


MISSED APPROACH: Climb to 5000 via MIB TACAN R-112 direct AMIRE and hold.

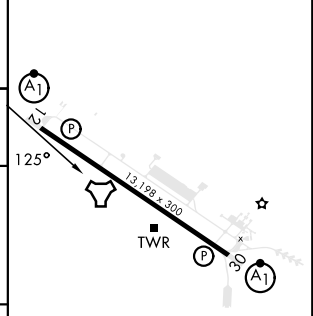
ATIS * <b>278.8</b>	MINOT APP CON <b>119.6 363.8</b>	MINOT TOWER * <b>120.65 253.5</b>	GND CON <b>134.0 275.8</b>	CLNC DEL <b>326.2</b>
------------------------	-------------------------------------	--------------------------------------	-------------------------------	--------------------------



EMERG SAFE ALT 100 NM 4700



ELEV 1666	TDZE 1666
-----------	-----------



CATEGORY	C	D	E
S-12*	2120/45	454 (500-7/8)	
CIRCLING **	2180-1 1/2 514 (600-1 1/2)	2320-2 654 (700-2)	2320-2 1/4 654 (700-2 1/4)

HIRL Rwy 12-30
----------------

# HI-TACAN Z RWY 12

NC-1, 17 APR 2025 to 15 MAY 2025

NC-1, 17 APR 2025 to 15 MAY 2025