

TACAN Y RWY 30

TACAN MIB Chan 96	APCH CRS 292°	Rwy Idg 13,198 TDZE 1646 Arprt Elev 1666
-----------------------------	-------------------------	---

[USAF]

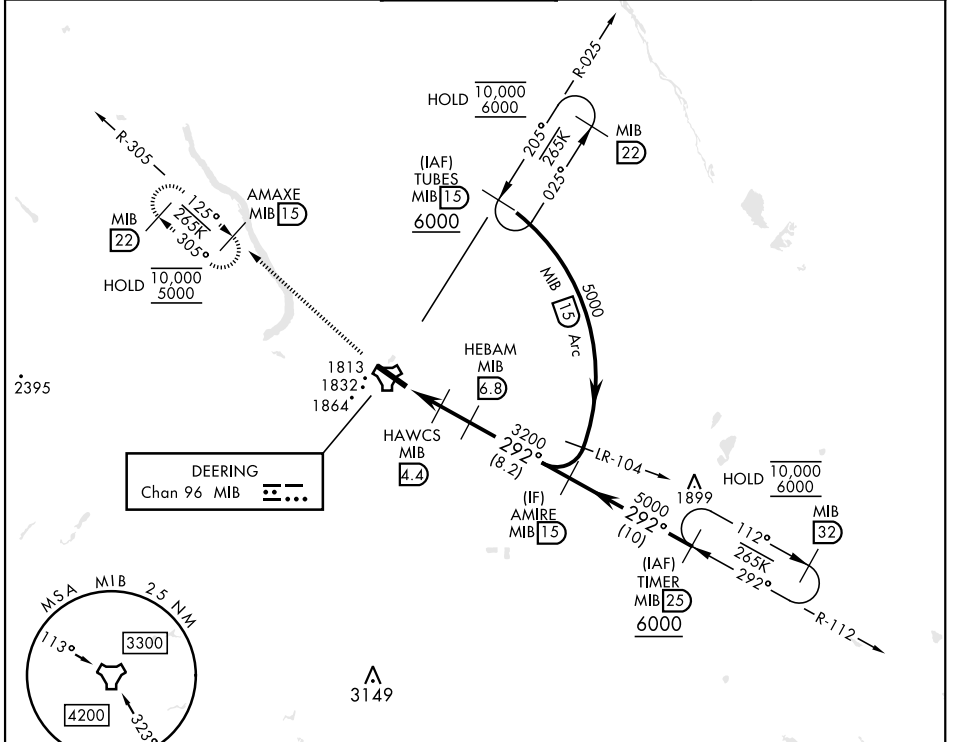
MINOT AFB (KMIB)

* When ALS inop, increase CAT AB RVR to 55, vis to 1 mile;
CAT CDE vis to 1 3/8 miles.
** Circling not authorized N of Rwy 12-30

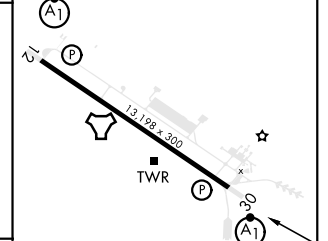
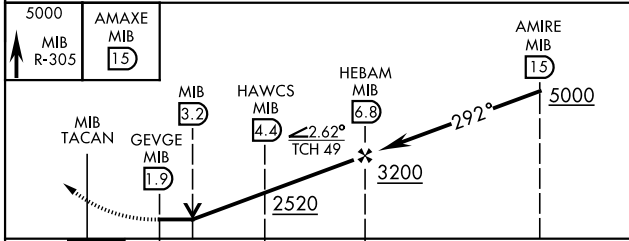


MISSED APPROACH: Climb to 5000 via
MIB TACAN R-305 direct AMAXE and hold.

ATIS ★ 278.8	MINOT APP CON 119.6 363.8	MINOT TOWER ★ 120.65 253.5	GND CON 134.0 275.8	CLNC DEL 326.2
------------------------	-------------------------------------	--------------------------------------	-------------------------------	--------------------------



ELEV 1666	TDZE 1646
-----------	-----------



CATEGORY	A	B	C	D	E
S-30 *	2100/24 454 (500-1/2)		2100/45 454 (500-3/4)		
CIRCLING **	2120-1 454 (500-1)	2140-1 474 (500-1)	2180-1 1/2 514 (600-1 1/2)	2320-2 654 (700-2)	2320-2 1/4 654 (700-2 1/4)

HIRL Rwy 12-30

TACAN Y RWY 30

NC-1, 17 APR 2025 to 15 MAY 2025

NC-1, 17 APR 2025 to 15 MAY 2025