

VOR/DME TBD <b>117.15</b> Chan <b>118(Y)</b>	APP CRS <b>121°</b>	Rwy Idg <b>4843</b> TDZE <b>9</b> Apt Elev <b>10</b>
--	------------------------	--

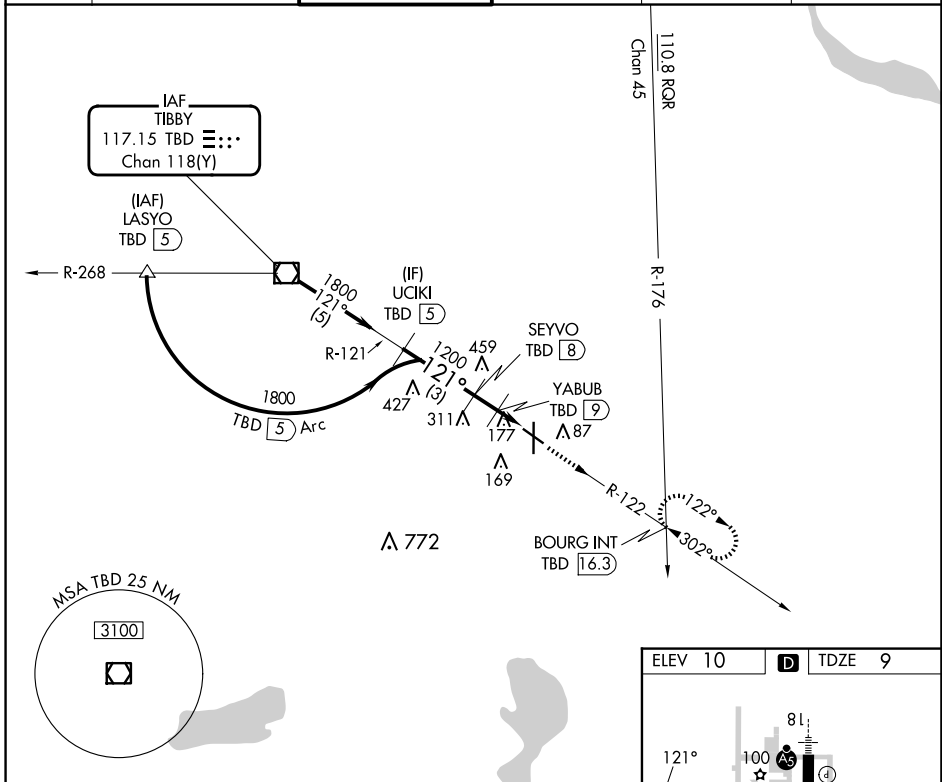
# COPTER VOR/DME RWY 12

HOUMA-TERREBONNE (HUM)

**⚠** When local altimeter setting not received, use Louis Armstrong New Orleans Intl altimeter setting and increase MDA 80 feet.

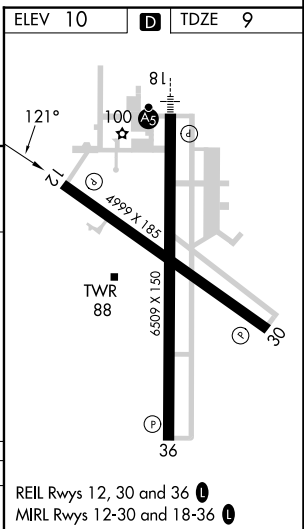
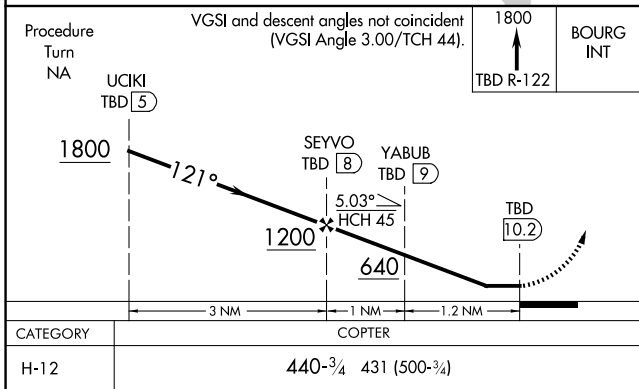
MISSED APPROACH: Climb to 1800 via TBD VOR/DME R-122 to BOURG INT/16.3 DME and hold.

ATIS <b>120.25</b>	NEW ORLEANS APP CON <b>118.9 350.35</b>	HOUMA TOWER ★ <b>125.3 (CTAF) 346.3</b>	GND CON <b>123.875</b>	CLNC DEL <b>118.9</b> (When twr closed)	UNICOM <b>122.95</b>
-----------------------	--	--	---------------------------	---	-------------------------



SC-4, 17 APR 2025 to 15 MAY 2025

SC-4, 17 APR 2025 to 15 MAY 2025



REIL Rwy 12, 30 and 36  
MRL Rwy 12-30 and 18-36