

WAAS CH 82234	APP CRS 279°	Rwy Idg TDZE Apt Elev	5013 1044 1044
W28A			

RNAV (GPS) RWY 28

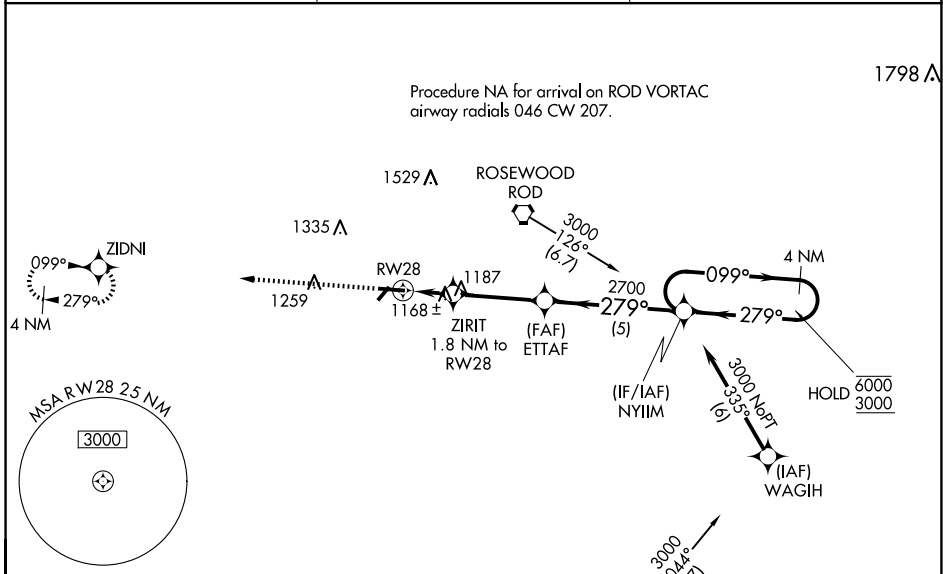
SIDNEY MUNI (SCA)

RNP APCH.

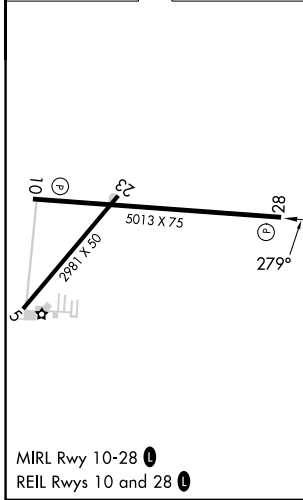
▼ Rwy 28 helicopter visibility reduction below 1 SM NA. Baro-VNAV NA when using James M. Cox Dayton Intl altimeter setting. For uncompensated Baro-VNAV systems, LNAV/VNAV NA below -22°C or above 54°C. When local altimeter setting not received, use James M. Cox Dayton Intl altimeter setting: increase LPV DA to 1355; increase LNAV/VNAV DA to 1365; increase all MDA 60 feet and LNAV Cat C visibility and Circling Cat C visibility ¼ SM. Straight-in Rwy 28 at night, operational VGSI required, remain at or above VGSI glidepath until threshold.

▲ NA MISSED APPROACH: Climb to 3000 direct ZIDNI and hold.

AWOS-3 120.425	COLUMBUS APP CON 134.45 294.5	UNICOM 123.05 (CTAF) 1
--------------------------	-----------------------------------------	-----------------------------------------



ELEV 1044	TDZE 1044
-----------	-----------



3000 ZIDNI	4 NM Holding Pattern			
* LNAV only.	ZIRIT 1.8 NM to RW28	ETTAF 2700	NYIIM 2700	6000 / 3000
	1640*	2700	279°	GP 3.00° TCH 36
	1.8	3.3 NM	5 NM	
CATEGORY	A	B	C	D
LPV DA	1302-1 258 (300-1)			NA
LNAV/VNAV DA	1312-1 268 (300-1)			NA
LNAV MDA	1420-1 376 (400-1)			NA
C CIRCLING	1460-1 416 (500-1)	1520-1 476 (500-1)	1640-1½ 596 (600-1½)	NA

SIDNEY, OHIO
Amdt 1A 13SEP18

40°14'N-84°09'W

RNAV (GPS) RWY 28

EC-2, 17 APR 2025 to 15 MAY 2025

EC-2, 17 APR 2025 to 15 MAY 2025