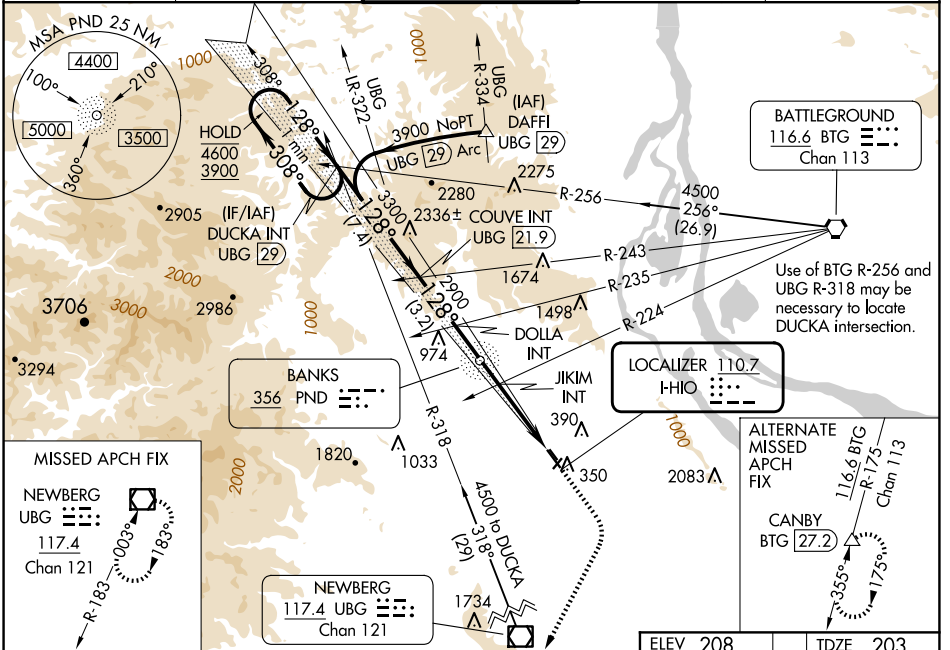


LOC I-HIO 110.7	APP CRS 128°	Rwy Idg TDZE Apt Elev	6600 203 208
---------------------------	------------------------	-----------------------------	---

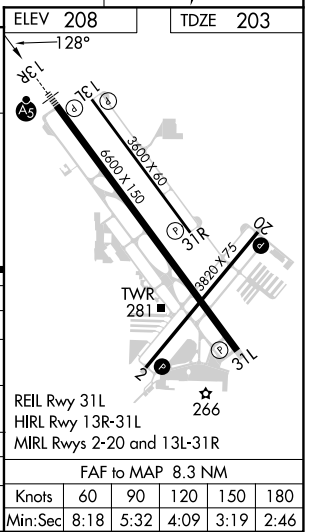
ILS or LOC RWY 13R

PORTLAND-HILLSBORO (HIO)

<p>⚠ Circling to Rwy 13L, 31R NA at night. Inop table does not apply to S-LOC Rwy 13R all Cats. For inop ALS, increase JIKIM fix minimums Cat C/D visibility to 1 3/8 SM.</p>	MALSR	MISSED APPROACH: Climb to 1000 then climbing right turn to 3000 direct UBG VOR/DME and hold. Continue climb-in-hold to 3000.		
ATIS 127.65	PORTLAND APP CON 126.0 269.175	HILLSBORO TOWER * 119.3(CTAF) 239.3	GND CON 121.7	UNICOM 122.95



DUCKA INT UBG [29]		COUVE INT UBG [21.9]		DOLLA INT		JIKIM INT	
One Minute Holding Pattern		3300		2900		*1660	
4600 ← 308°		128° →		128° →		*LOC only.	
3900		3300		2900		1660	
GS 3.00°		TCH 48					
7.4 NM		3.2 NM		3.9 NM		4.4 NM	
CATEGORY	A	B	C	D			
S-ILS 13R	403/24		200 (200-1/2)				
S-LOC 13R	1660/60 1457 (1500-1 1/4)		1660-1 1/2 1457 (1500-1 1/2)		1660-3 1457 (1500-3)		
CIRCLING	1660-1 1/4 1452 (1500-1 1/4)		1660-1 1/2 1452 (1500-1 1/2)		1660-3 1452 (1500-3)		
JIKIM FIX MINIMUMS (DUAL VOR RECEIVERS REQUIRED)							
S-LOC 13R	680/24 477 (500-1/2)		680/50 477 (500-1)				
CIRCLING	680-1 472 (500-1)		720-1 512 (600-1)		720-1 1/2 512 (600-1 1/2)		980-2 1/2 772 (800-2 1/2)



NW-1, 17 APR 2025 to 15 MAY 2025

NW-1, 17 APR 2025 to 15 MAY 2025