

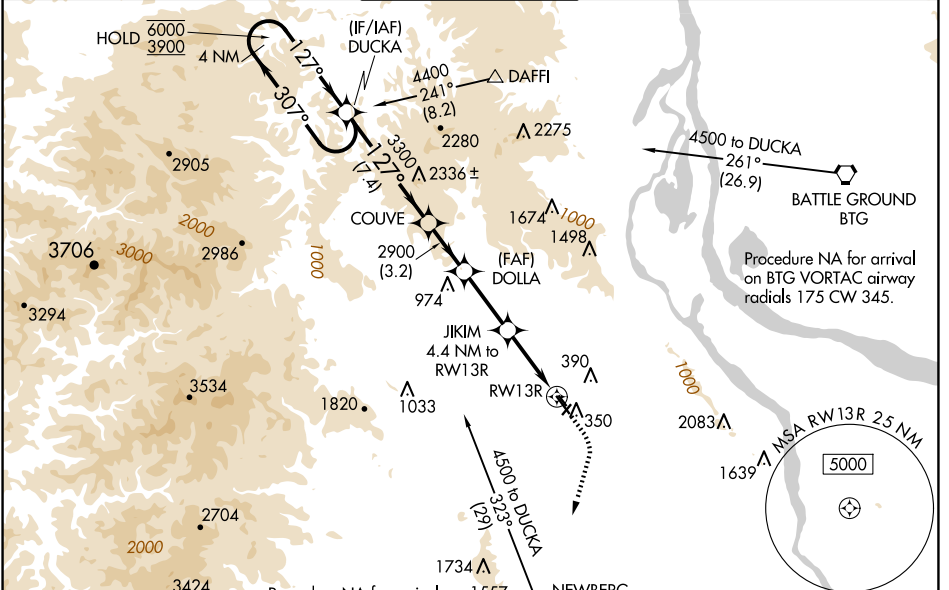
WAAS CH 69502 W13A	APP CRS 127°	Rwy Idg TDZE Apt Elev	6600 203 208
--	------------------------	-----------------------------	---

RNAV (GPS) RWY 13R

PORTLAND-HILLSBORO (HIO)

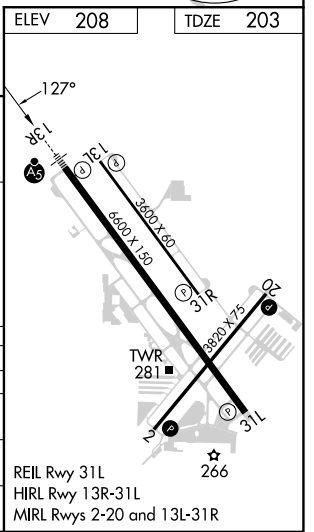
RNP APCH.	MALSR	MISSED APPROACH: Climb to 1000 then climbing right turn to 3000 direct UBG VOR/DME and hold. Continue climb-in-hold to 3000.
<p>⚠ Circling to Rwy 13L-31R NA at night. For uncompensated Baro-VNAV systems, LNAV/VNAV NA below -18°C or above 54°C. For inop ALS, increase LNAV Cat A/B visibility to RVR 5500 and Cat C/D to 1 3/8 SM. # RVR 1800 authorized with use of FD or AP or HUD to DA.</p>		

ATIS 127.65	PORTLAND APP CON 126.0 269.175	HILLSBORO TOWER ★ 119.3 (CTAF) 239.3	GND CON 121.7	UNICOM 122.95
-----------------------	--	--	-------------------------	-------------------------



ELEV	208	TDZE	203
------	-----	------	-----

4 NM Holding Pattern	DUCKA	COUVE	DOLLA	JIKIM	UBG
	6000 3900	3300	2900	4.4 NM to RW13R	*RNAV only.
GP 3.00° TCH 48	← 307°	127° →	127°	*1.3 NM to RW13R	
	7.4 NM	3.2 NM	3.9 NM	3.1 NM	1.3 NM
CATEGORY	A	B	C	D	
LPV DA#		403/24	200 (200-1/2)		
LNAV/VNAV DA		661/45	458 (500-7/8)		
LNAV MDA	660/40	457 (500-3/4)	660/50	457 (500-1)	
CIRCLING	680-1 472 (500-1)	720-1 512 (600-1)	720-1 1/2 512 (600-1 1/2)	980-2 1/2 772 (800-2 1/2)	



NW-1, 17 APR 2025 to 15 MAY 2025

NW-1, 17 APR 2025 to 15 MAY 2025