

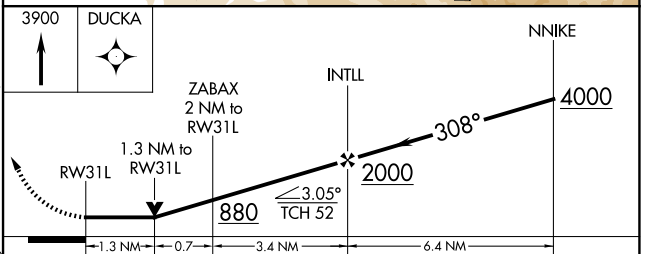
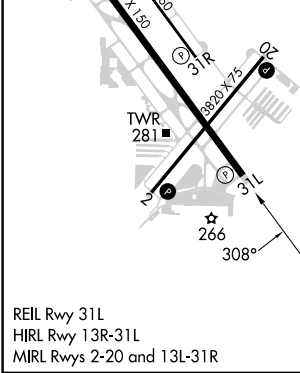
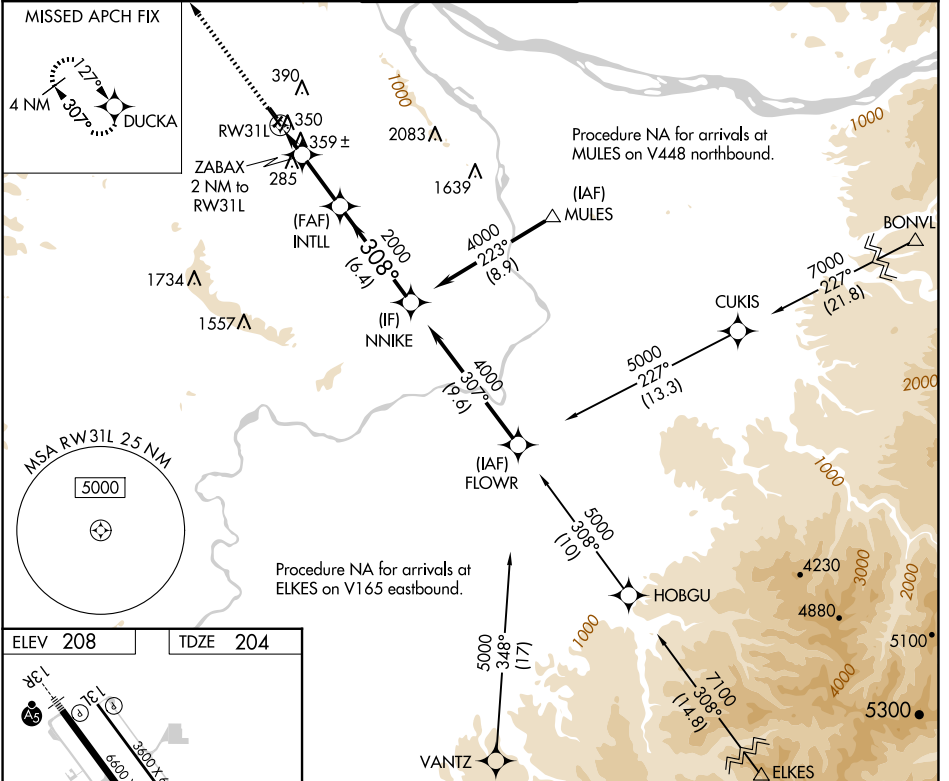
APP CRS	Rwy Idg	6600
308°	TDZE	204
	Apt Elev	208

RNAV (GPS) RWY 31L

PORTLAND-HILLSBORO (HIO)

RNP APCH.	MISSED APPROACH: Climb to 3900 direct DUCKA and hold.
Circling to Rwy 13L, 31R NA at night. Rwy 31L helicopter visibility reduction below 3/4 SM NA.	

ATIS 127.65	PORTLAND APP CON 126.0 269.175	HILLSBORO TOWER * 119.3 (CTAF) 239.3	GND CON 121.7	UNICOM 122.95
-----------------------	--	--	-------------------------	-------------------------



CATEGORY	A	B	C	D
LNAV MDA	660-1 456 (500-1)		660-1½ 456 (500-1½)	
CIRCLING	680-1 472 (500-1)	720-1 512 (600-1)	720-1½ 512 (600-1½)	980-2½ 772 (800-2½)

NW-1, 17 APR 2025 to 15 MAY 2025

NW-1, 17 APR 2025 to 15 MAY 2025