

# RNAV (GPS) RWY 5

FREDERICK MUNI (F'DK)

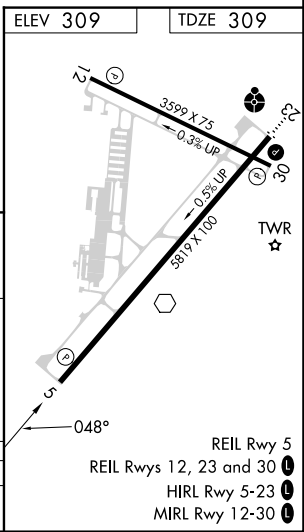
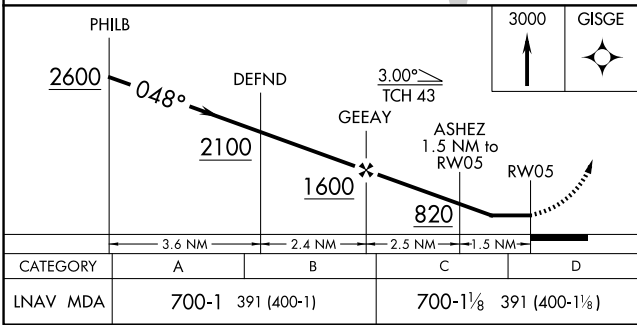
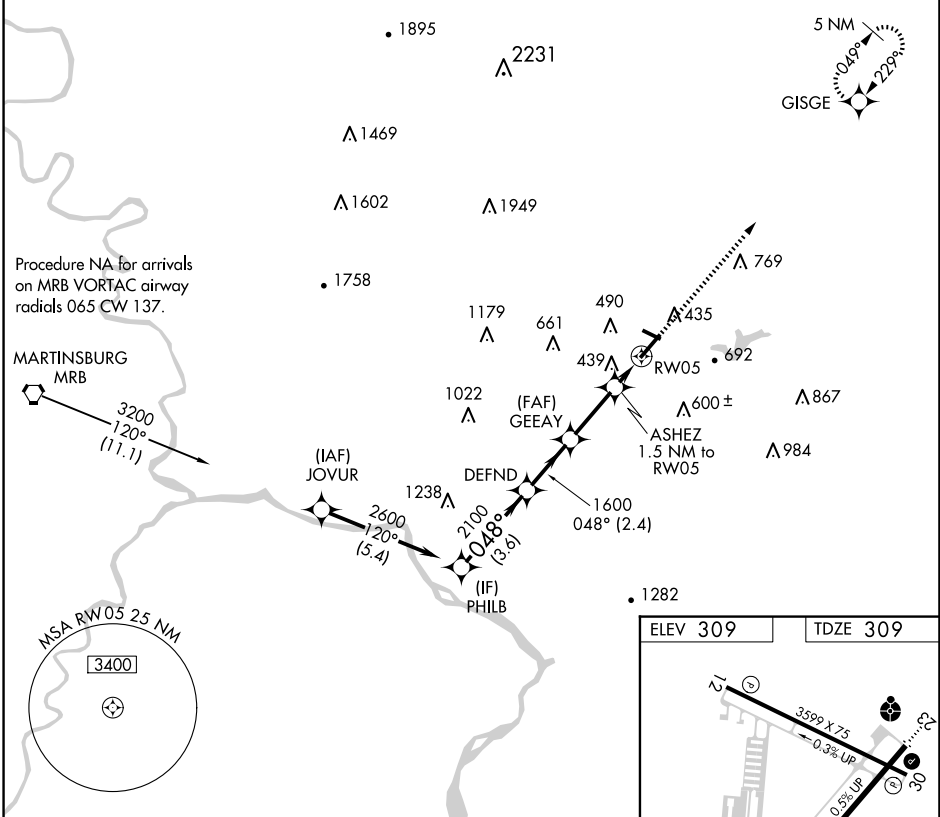
APP CRS	Rwy ldg	<b>5819</b>
<b>048°</b>	TDZE	<b>309</b>
	Apt Elev	<b>309</b>

RNP APCH - GPS.

**▽**  
**▲** Rwy 5 helicopter visibility reduction below ¾ SM NA.

MISSED APPROACH: Climb to 3000 direct GISGE and hold, continue climb-in-hold to 3000.

ATIS <b>124.875</b>	POTOMAC APP CON <b>126.1 338.25</b>	FREDERICK TOWER ★ <b>132.4</b> (CTAF) <b>0</b>	GND CON <b>127.425</b>	CLNC DEL <b>127.425</b>	CLNC DEL <b>126.9</b> (When twr closed)	UNICOM <b>122.95</b>
------------------------	--	---	---------------------------	----------------------------	---	-------------------------



NE-3, 17 APR 2025 to 15 MAY 2025

NE-3, 17 APR 2025 to 15 MAY 2025