

WAAS CH 58304 W36A	APP CRS 005°	Rwy Idg 5264 TDZE 759 Apt Elev 777
--	------------------------	---

RNAV (GPS) RWY 36

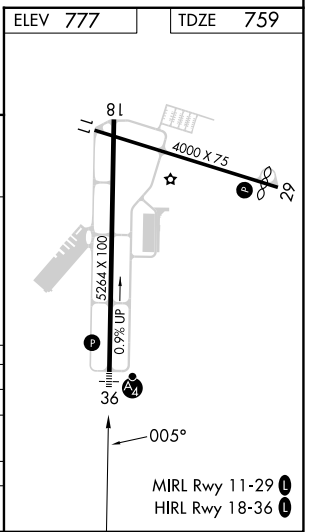
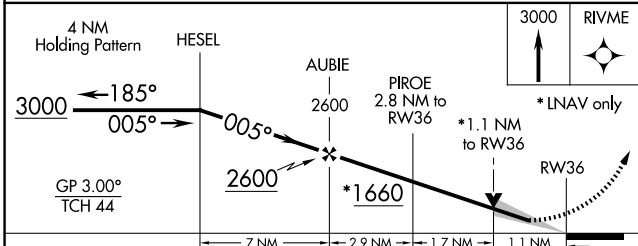
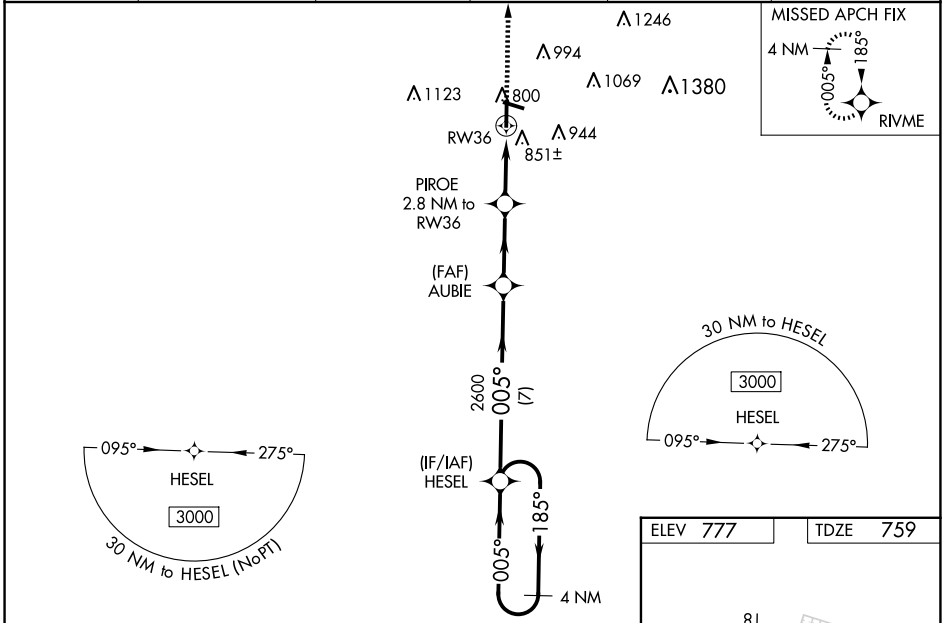
AUBURN UNIVERSITY RGNL (AUO)

⚠ For uncompensated Baro-VNAV systems, LNAV/VNAV NA below -16°C (4°F) or above 54°C (130°F). Baro-VNAV and VDP NA when using Columbus altimeter setting. DME/DME RNP-0.3 NA. When local altimeter setting not received, use Columbus altimeter setting: increase LPV DA to 1072 feet and visibility all Cats 1/2 SM; increase LNAV/VNAV DA to 1173 feet and visibility all Cats 3/8 SM; increase all MDA 120 feet and LNAV Cats C/D visibility 1/4 SM and Circling Cats C/D visibility 1/2 SM. For inop ALS, increase LNAV/VNAV Cat D visibility 1/4 SM and LNAV Cat D visibility 1/8 SM. For inop ALS, when using Columbus altimeter setting, increase LPV all Cats visibility to 1 1/8 SM, LNAV/VNAV all Cats visibility to 1 1/2 SM, and LNAV all Cats visibility to 1 3/8 SM.

MALSF

MISSED APPROACH: Climb to 3000 direct RIVME and hold.

AWOS-3PT 132.575	ATLANTA APP CON ★ 125.5 323.1	AUBURN TOWER ★ 123.875	GND CON 121.625	CLNC DEL 118.7 (When twr closed)	UNICOM 123.0 (CTAF)
----------------------------	---	----------------------------------	---------------------------	---	-------------------------------



CATEGORY	A	B	C	D
LPV DA		959-3/4	200 (200-3/4)	
LNAV/VNAV DA		1060-7/8	301 (300-7/8)	
LNAV MDA	1120-3/4	361 (400-3/4)	1120-7/8	361 (400-7/8)
CIRCLING	1280-1 503 (600-1)	1360-1 583 (600-1)	1380-1 3/4 603 (700-1 3/4)	1480-2 1/4 703 (800-2 1/4)

SE-4, 17 APR 2025 to 15 MAY 2025

SE-4, 17 APR 2025 to 15 MAY 2025