

ANAHEIM ONE DEPARTURE

AL-5136 (FAA)

FULLERTON MUNI (F'UL)
FULLERTON, CALIFORNIA

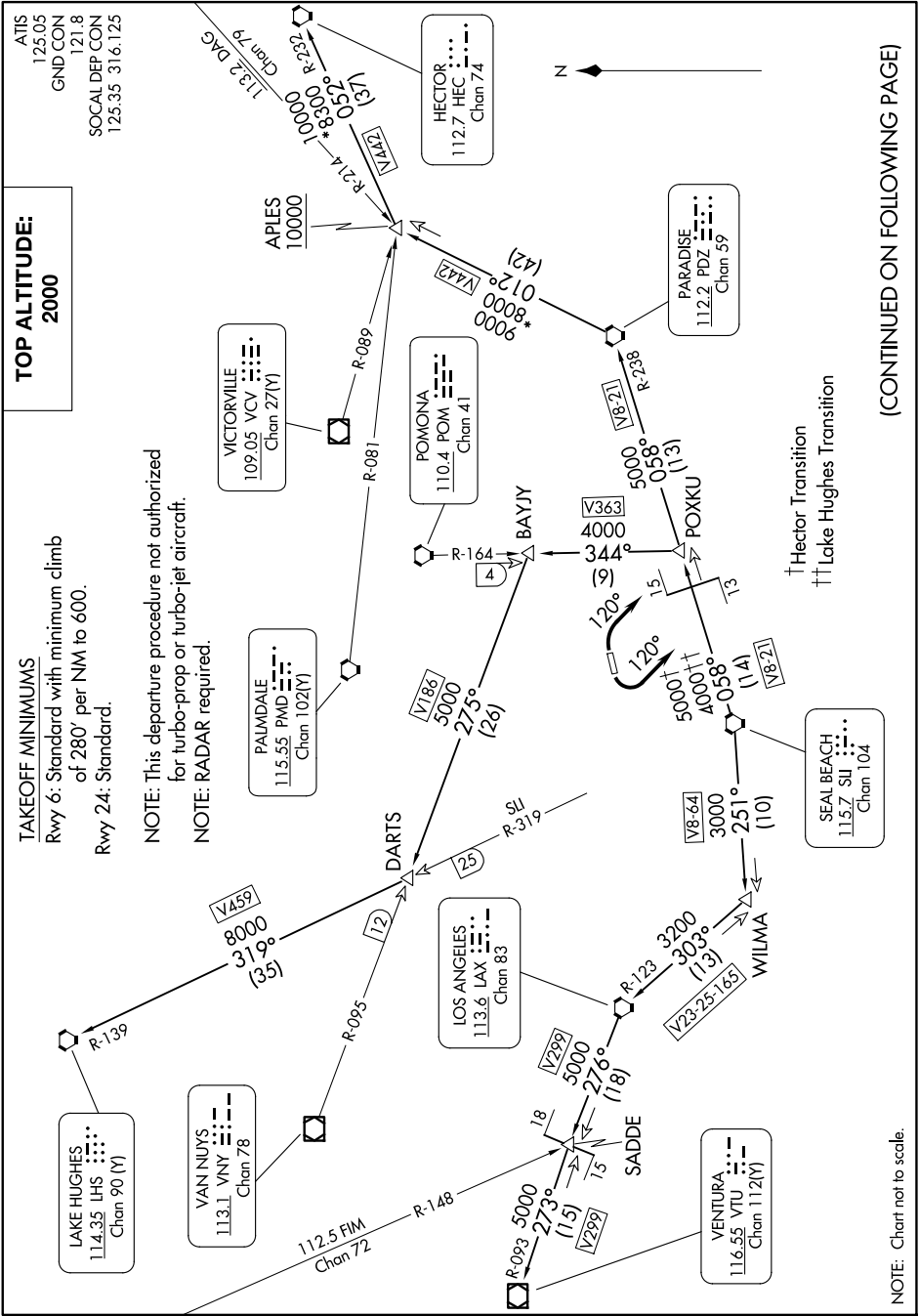
**TOP ALTITUDE:
2000**

TAKEOFF MINIMUMS

Rwy 6: Standard with minimum climb of 280' per NM to 600.
Rwy 24: Standard.

NOTE: This departure procedure not authorized for turbo-prop or turbo-jet aircraft.
NOTE: RADAR required.

ATIS 125.05
GND CON 121.8
SOCALDEP CON 125.35 316.125



(CONTINUED ON FOLLOWING PAGE)

NOTE: Chart not to scale.

SW-3, 17 APR 2025 to 15 MAY 2025

SW-3, 17 APR 2025 to 15 MAY 2025

ANAHEIM ONE DEPARTURE

FULLERTON, CALIFORNIA
FULLERTON MUNI (F'UL)