

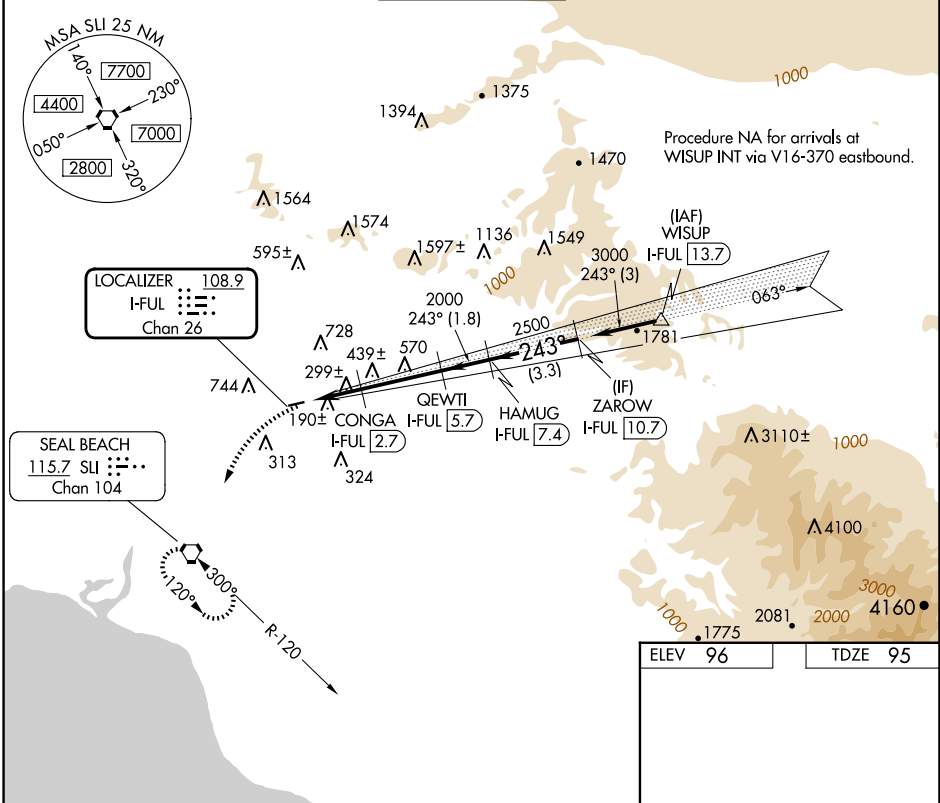
LOC/DME I-FUL 108.9 Chan 26	APP CRS 243°	Rwy Idg 2868 TDZE 95 Apt Elev 96
------------------------------------------	------------------------	-------------------------------------------------------------

LOC/DME RWY 24
FULLERTON MUNI (F'UL)

⚠ Inoperative table does not apply.
⚠ Night landing: Rwy 6 NA.
⚠ Helicopter visibility reduction below 1 SM NA.

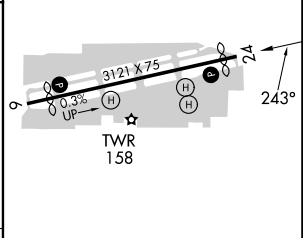
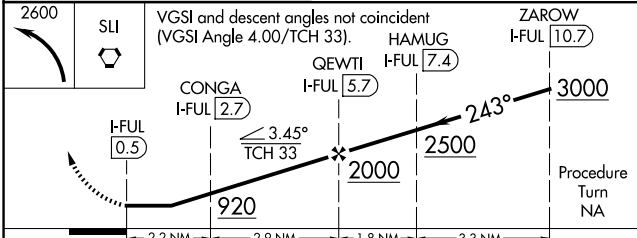
MISSED APPROACH: Climbing left turn to 2600
direct SLI VORTAC and hold.

ATIS 125.05	SOCAL APP CON 125.35 316.125	FULLERTON TOWER* 119.1 (CTAF) 0	GND CON 121.8	UNICOM 122.95
-----------------------	----------------------------------------	--------------------------------------------------	-------------------------	-------------------------



SW-3, 17 APR 2025 to 15 MAY 2025

SW-3, 17 APR 2025 to 15 MAY 2025



CATEGORY	A	B	C	D
S-24	560-1	465 (500-1)		NA
CIRCLING	760-1 664 (700-1)	1060-1½ 964 (1000-1½)		NA

MRL Rwy 6-24
REIL Rws 6 and 24