

WAAS CH 65840 W32A	APP CRS 318°	Rwy Idg 3034 TDZE 49 Apt Elev 49
--	------------------------	---

RNAV (GPS) RWY 32

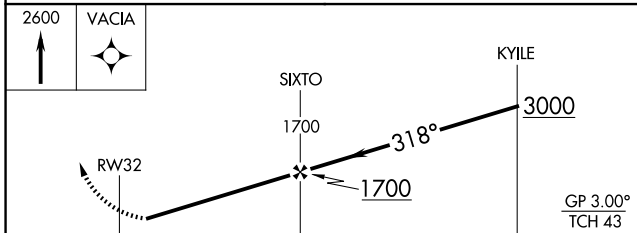
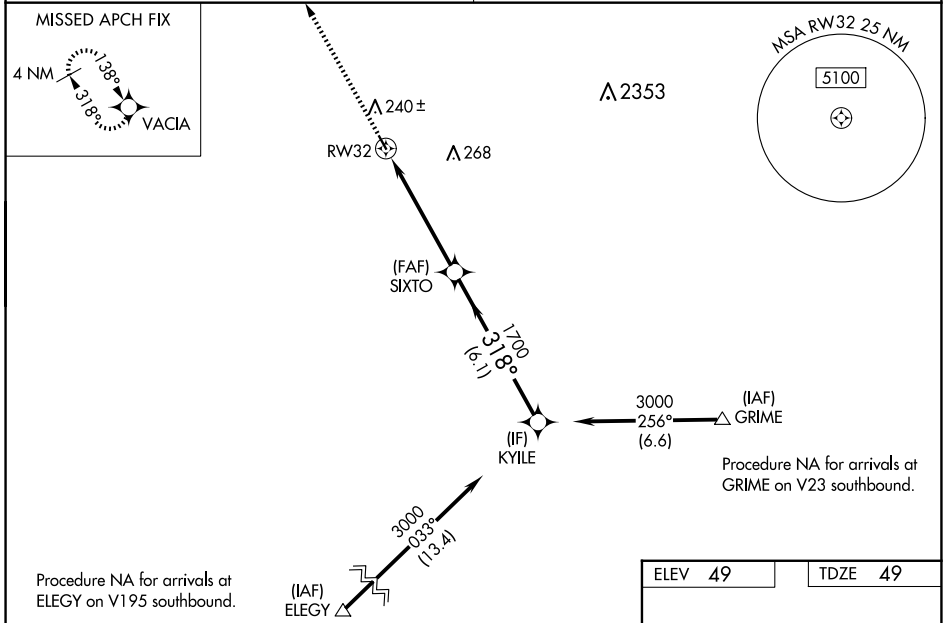
COLUSA COUNTY (008)

RNP APCH - GPS.

NA Baro-VNAV NA when using Sacramento Intl altimeter setting. Rwy 32 helicopter visibility reduction below 1 SM NA. For uncompensated Baro-VNAV systems, LNAV/VNAV NA below -15°C or above 54°C. Procedure NA at night. Obtain local altimeter setting on CTAF; when not received, use Sacramento Intl altimeter setting: increase LPV DA to 381 feet, increase LNAV/VNAV DA to 551 feet and all visibilities ¼ SM; increase all MDAs 100 feet and LNAV Cat C visibility ¼ SM and Circling Cat C visibility ½ SM.

MISSED APPROACH: Climb to 2600 direct VACIA and hold.

OAKLAND CENTER 132.2 350.3	UNICOM 122.8 (CTAF) 0
--------------------------------------	---------------------------------



ELEV 49	TDZE 49
---------	---------

Λ 183

3034 X 59

32

318°

MIRL Rwy 14-32 0

CATEGORY	A	B	C	D
LPV DA	299-1	250 (300-1)		NA
LNAV/VNAV DA	469-1 ½	420 (500-1 ½)		NA
LNAV MDA	520-1	471 (500-1)	520-1 ¾ 471 (500-1 ¾)	NA
CIRCLING	600-1	551 (600-1)	620-1 ½ 571 (600-1 ½)	NA

SW-2, 17 APR 2025 to 15 MAY 2025

SW-2, 17 APR 2025 to 15 MAY 2025