

VORTAC ILA <b>114.4</b> Chan <b>91</b>	APP CRS <b>356°</b>	Rwy Idg TDZE Apt Elev <b>49</b>	<b>N/A</b> <b>N/A</b> <b>49</b>
--	------------------------	--	---------------------------------------

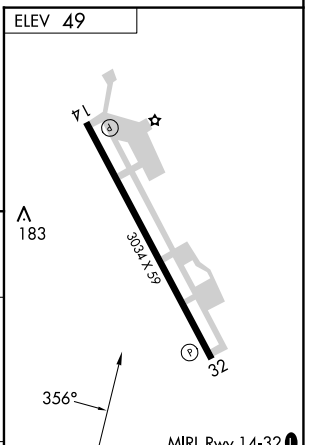
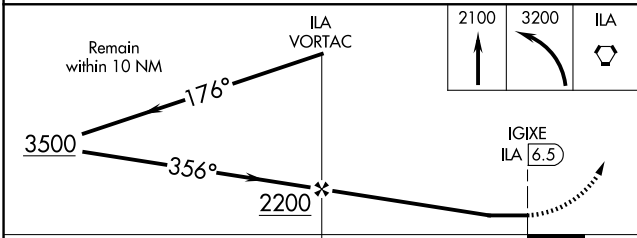
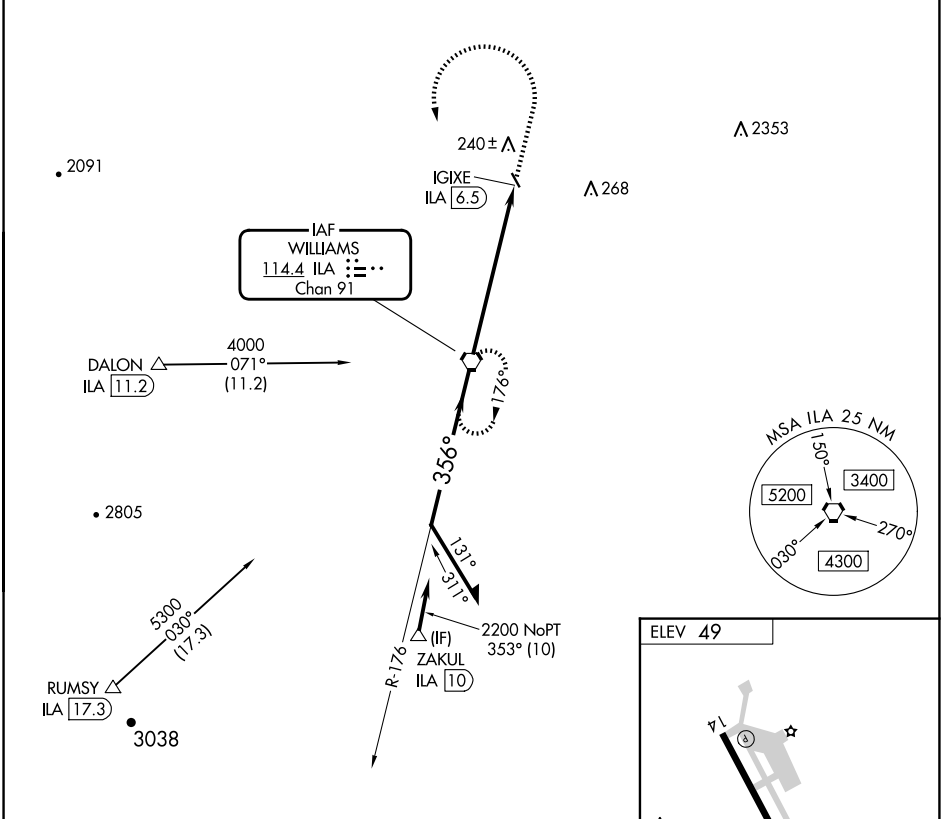
**VOR-A**  
COLUSA COUNTY (008)

DME required.

**NA** Circling Rwy 32 NA at night. Obtain local altimeter setting on CTAF; when not received, use Sacramento Intl altimeter setting and increase all MDAs 100 feet and visibility Cat C ½ SM.

MISSED APPROACH: Climb to 2100 then climbing left turn to 3200 direct ILA VORTAC and hold.

OAKLAND CENTER <b>132.2 350.3</b>	UNICOM <b>122.8 (CTAF) 0</b>
--------------------------------------	---------------------------------



CATEGORY	FAF to MAP 6.5 NM					
	A	B	C	D		
<b>C</b> CIRCLING	600-1	551 (600-1)	620-1½ 571 (600-1½)	NA		
	Knots	60	90	120	150	180
	Min:Sec	6:30	4:20	3:15	2:36	2:10

SW-2, 17 APR 2025 to 15 MAY 2025

SW-2, 17 APR 2025 to 15 MAY 2025