

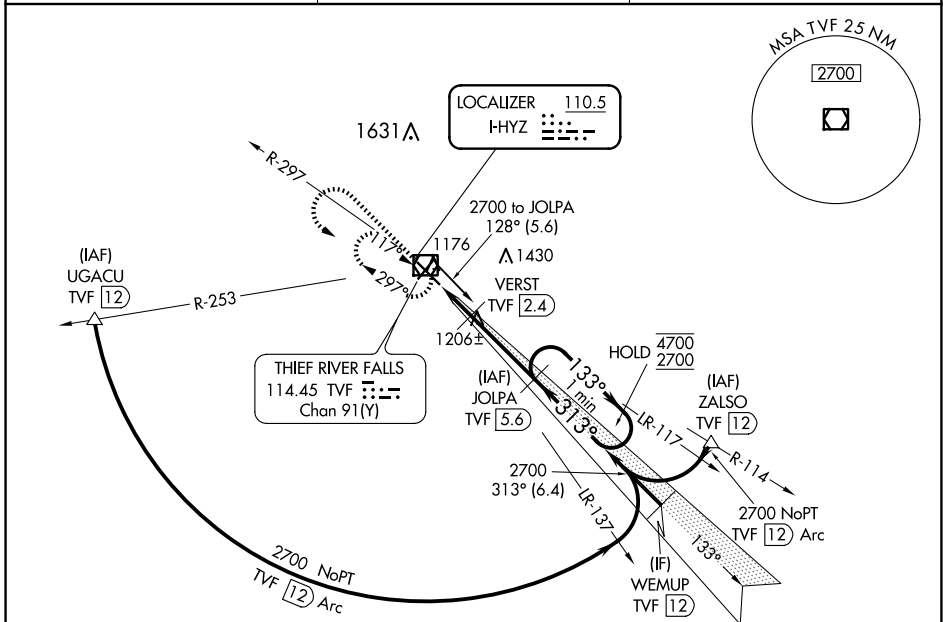
LOC I-HYZ 110.5	APP CRS 313°	Rwy Idg 6304
		TDZE 1114
		Apt Elev 1119

ILS or LOC RWY 31

THIEF RIVER FALLS RGNL (TVF)

DME required for procedure entry. DME required.	MALSR	MISSED APPROACH: Climb to 2700 then left turn direct TVF VOR/DME and hold.
<p>▼ For inop ALS, increase S-LOC 31 Cat C/D visibility to 1 SM.</p> <p>▲ DME from TVF VOR/DME. Simultaneous reception of I-HYZ and TVF DME required.</p>		

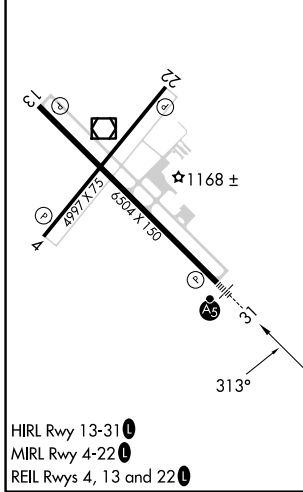
AWOS-3PT 119,025	MINNEAPOLIS CENTER 132.15 269.6	UNICOM 122.8 (CTAF)
----------------------------	-------------------------------------------	-------------------------------



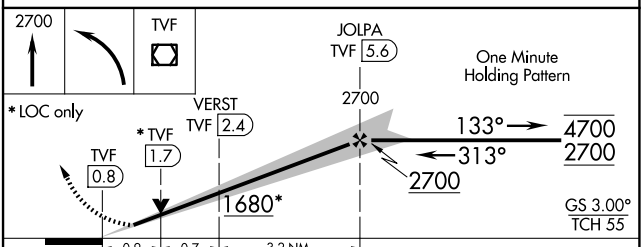
NC-1, 17 APR 2025 to 15 MAY 2025

NC-1, 17 APR 2025 to 15 MAY 2025

ELEV 1119	D	TDZE 1114
-----------	---	-----------



- HIRL Rwy 13-31
- MIRL Rwy 4-22
- REIL Rwy 4, 13 and 22



CATEGORY	A	B	C	D
S-ILS 31	1314-1/2 200 (200-1/2)			
S-LOC 31	1460-1/2	346 (400-1/2)	1460-5/8	346 (400-5/8)
CIRCLING	1540-1 421 (500-1)	1580-1 461 (500-1)	1820-2 701 (800-2)	1980-2 3/4 861 (900-2 3/4)